

# THORNTON VAC TRUCK DUMP STATION

PROJECT NO. 174-18  
CITY OF THORNTON, CO

**OLSSON**

1525 Raleigh Street, Suite 400  
Denver, CO 80204  
TEL 303.237.2072  
FAX 303.237.2659  
www.olsson.com

**NOTE**  
THIS DOCUMENT HAS BEEN RELEASED BY OLSSON ONLY FOR REVIEW BY REGULATORY AGENCIES AND OTHER PROFESSIONALS, AND IS SUBJECT TO CHANGE. THIS DOCUMENT IS NOT TO BE USED FOR CONSTRUCTION.

OLSSON ASSUMES NO RESPONSIBILITY FOR EXISTING UTILITY LOCATIONS (HORIZONTAL OR VERTICAL). THE EXISTING UTILITIES SHOWN ON THIS DRAWING HAVE BEEN PLOTTED FROM THE BEST AVAILABLE INFORMATION. IT IS HOWEVER THE RESPONSIBILITY OF THE CONTRACTOR TO FIELD VERIFY THE LOCATION OF ALL UTILITIES PRIOR TO THE COMMENCEMENT OF ANY CONSTRUCTION ACTIVITIES.



VICINITY MAP  
SCALE: 1" = 800'

INDEX OF DRAWINGS	
SHEET NUMBER	SHEET DESCRIPTION
1	COVER
2	GENERAL NOTES
3	EROSION CONTROL NOTES
4	EROSION CONTROL PLAN
5	EROSION CONTROL DETAILS
6	PLAN AND PROFILE
7	STRUCTURAL DETAILS
8	STRUCTURAL NOTES
9	DETAILS
10	DETAILS

PREPARED FOR:



CITY OF THORNTON

PREPARED BY:

**OLSSON**

1525 Raleigh Sreet  
Suite 400  
Denver, CO 80204  
TEL 303.237.2072  
FAX 303.237.2659



CHANCE UHRICH, P.E. 48947, PROJECT MANAGER

DATE

**FOR BID**  
NOT TO BE USED FOR CONSTRUCTION  
August 23, 2023  
DATE PRINTED  
OLSSON

CALL UTILITY NOTIFICATION  
CENTER OF COLORADO  
811  
CALL 3-BUSINESS DAYS IN ADVANCE  
BEFORE YOU DIG, GRADE, OR EXCAVATE  
FOR THE MARKING OF UNDERGROUND  
MEMBER UTILITIES.



REV. NO.	DATE	REVISIONS DESCRIPTION

COVER SHEET	2023
THORNTON VAC TRUCK DUMP STATION	THORNTON, CO

drawn by:	KP
checked by:	CU
approved by:	DK
QA/QC by:	DK
project no.:	018-2048
drawing no.:	W TTL 82048
date:	8.23.2023

DWG: F:\2018\2001-2500\018-2048-Design\AutoCAD\Final Plans\WTR\DWG\W\_TTL\_82048.dwg USER: gmeidl  
DATE: Aug 23, 2023 1:52pm XREFS: 171001X\_P-Site FloorPlan-x-Consultant\Export\FloorPlan\_W\_TTL\BLK\_82048







**EROSION AND SEDIMENT CONTROL NOTES**

- BMPs SHALL BE INSTALLED BEFORE ANY EARTH DISTURBING ACTIVITIES COMMENCE.
- LIMITS OF DISTURBANCE SHOWN ON THE PLANS SHALL BE IMPLEMENTED AT THE CONSTRUCTION SITE BY INSTALLING OR USING EXISTING PHYSICAL BARRIERS TO CONTAIN CONSTRUCTION ACTIVITIES TO THE DESIGNATED AREA.
- STORMWATER DISCHARGER FROM CONSTRUCTION ACTIVITIES SHALL NOT CAUSE, HAVE THE REASONABLE POTENTIAL TO CAUSE, OR MEASURABLE CONTRIBUTE TO AN EXCEEDANCE OF ANY WATER QUALITY STANDARD.
- CONSTRUCTION SHALL BE PHASED IN A MANNER TO LIMIT EARTH DISTURBING ACTIVITIES (I.E. THE ENTIRE PROJECT SITE SHOULD NOT BE DISTURBED IF CONSTRUCTION WILL ONLY BE OCCURRING IN ONE PARTICULAR SECTION).
- SEDIMENT CAUSED BY ACCELERATED SOIL EROSION SHALL BE REMOVED FROM RUNOFF WATER BEFORE IT LEAVES THE CONSTRUCTION SITE.
- BULK STORAGE STRUCTURES FOR PETROLEUM PRODUCTS AND ANY OTHER CHEMICALS SHALL HAVE SECONDARY CONTAINMENT OR EQUIVALENT PROTECTION TO CONTAIN ALL SPILLS AND PREVENT ANY SPILLED MATERIAL FROM ENTERING STATE WATERS.
- A COPY OF THE SWMP AND SITE MAPS MUST BE AVAILABLE AT ALL TIMES ON THE CONSTRUCTION SITE UNLESS OTHERWISE APPROVED BY CDPHE OR THE CITY.
- THE SWMP AND SITE MAPS SHALL BE CONTINUOUSLY UPDATED TO REFLECT NEW OR REVISED BEST MANAGEMENT PRACTICES (BMPs) DUE TO CHANGES IN DESIGN, CONSTRUCTION, OPERATION, OR MAINTENANCE OF THE CONSTRUCTION SITE. UPDATES MUST BE MADE WITHIN 72 HOURS FOLLOWING THE CHANGE IN BMPs.
- THE CONTRACTOR SHALL INSPECT THE CONSTRUCTION SITE (INCLUDING ALL BMPs, STORAGE CONTAINERS, AND CONSTRUCTION EQUIPMENT) A MINIMUM OF EVERY 14 CALENDAR DAYS AND WITHIN 24 HOURS AFTER A PRECIPITATION EVENT OR SNOW MELT THAT CAUSE SURFACE EROSION. INSPECTIONS SHALL CONTINUE UNTIL AN INACTIVATION NOTICE IS FILED WITH CDPHE.
- THE CONTRACTOR SHALL KEEP A RECORD OF ALL INSPECTIONS ON SITE AND AVAILABLE FOR REVIEW BY CDPHE OR THORNTON STAFF. INSPECTION REPORTS MUST IDENTIFY ANY INCIDENTS OF NON-COMPLIANCE WITH THE TERMS AND CONDITIONS OF THE PERMIT.
- BMPs REQUIRING MAINTENANCE OR ADJUSTMENT SHALL BE ADDRESSED IMMEDIATELY AFTER OBSERVATION OF THE FAILING BMP.
- FOR ALL INSTANCES OF NON-COMPLIANCE BASED ON ENVIRONMENTAL HAZARDS AND CHEMICAL SPILLS AND RELEASES, ALL NEEDED INFORMATION MUST BE PROVIDED ORALLY TO CDPHE SPILL REPORTING LINE (24-HOUR NUMBER FOR ENVIRONMENTAL HAZARDS AND CHEMICAL SPILLS AND RELEASES: 1-877-518-5608) WITHIN 24 HOURS FROM THE TIME THE CONTRACTOR FIRST BECOMES AWARE OF THE SPILL OR RELEASE.
- STRAW BALES SHALL NOT BE USED FOR PRIMARY EROSION OR SEDIMENT CONTROL (I.E. STRAW BALES MAY BE USED FOR REINFORCEMENT BEHIND ANOTHER BMP, SUCH AS SILT FENCE).
- BMPs INTENDED FOR SHEET FLOW SEDIMENT RUNOFF SHALL BE PLACED PARALLEL TO THE SLOPE CONTOURS.
- ALL BMPs SHALL BE CLEANED WHEN SEDIMENT LEVELS ACCUMULATE TO HALF THE DESIGN OF THE BMP UNLESS OTHERWISE SPECIFIED IN THE SWMP.
- A VEHICLE TRACKING PAD (VTP) SHALL BE PLACED ALL EXITS FROM THE SITE TO PREVENT TRACK-OUT ONTO STREETS OR ROADS. IF TRACK-OUT DOES OCCUR, THE CONTRACTOR SHALL IMMEDIATELY SWEEP THE STREET OF DEBRIS. RECYCLED CRUSHED CONCRETE OR ASPHALT SHALL NOT BE USED FOR VEHICLE TRACKING PADS OR ON ANY VEHICLE TRAFFIC AREA.
- ALL SEDIMENT COLLECTED IN BMPs SHALL BE REMOVED PRIOR TO THORNTON'S ISSUANCE OF INITIAL ACCEPTANCE.
- PERMANENT EROSION CONTROL MEASURES FOR SLOPES, CHANNELS, DITCHES, OR ANY DISTURBED LAND AREA SHALL BE COMPLETED WITHIN 14 CALENDAR DAYS AFTER FINAL GRADING OR THE FINAL EARTH DISTURBANCE HAS BEEN COMPLETED. WHEN IT IS NOT POSSIBLE TO PERMANENTLY STABILIZE A DISTURBED AREA AFTER AN EARTH DISTURBANCE HAS BEEN COMPLETED, OR WHERE SIGNIFICANT EARTH DISTURBANCE ACTIVITY CEASES, TEMPORARY SOIL EROSION CONTROL MEASURES SHALL BE IMPLEMENTED WITHIN 14 CALENDAR DAYS AFTER THE DISTURBANCE IS COMPLETED. TEMPORARY EROSION CONTROL MEASURES SHALL BE MAINTAINED UNTIL PERMANENT SOIL EROSION MEASURES ARE IMPLEMENTED.
- FINAL STABILIZATION HAS BEEN ACHIEVED WHEN ALL EARTH DISTURBING ACTIVITIES AT THE SITE HAVE BEEN COMPLETED, AND UNIFORM VEGETATIVE COVER HAS BEEN ESTABLISHED WITH AN INDIVIDUAL PLANT DENSITY OF AT LEAST 70 PERCENT OF PRE-DISTURBANCE LEVELS, OR EQUIVALENT PERMANENT, PHYSICAL EROSION REDUCTION METHODS HAVE BEEN EMPLOYED.
- ALL TEMPORARY BMPs SHALL BE REMOVED FROM THE SITE UPON SUBMITTING THE INACTIVATION NOTICE.
- ALL SITE WASTED (INCLUDING TRASH AND BUILDING MATERIALS) MUST BE PROPERLY MANAGED TO PREVENT POTENTIAL POLLUTION OF STATE WATERS.
- FOR STREET REPAIR OPERATIONS SUCH AS ROTOR MILLING, SLURRY SEAL AND CHIP SEAL, THE MINIMUM BMPs REQUIRED ARE: INLET PROTECTION, CURB SOCKS, AND DAILY STREET SWEEPING.

**SWMP GENERAL NOTES**

- THE CONTRACTOR IS RESPONSIBLE FOR OBTAINING A PERMIT FROM CDPHE AT LEAST 10 CALENDAR DAYS PRIOR TO THE COMMENCEMENT OF CONSTRUCTION ACTIVITIES FOR ANY EARTH DISTURBANCE GREATER THAN ONE (1) ACRE. THE CONTRACTOR SHALL PROVIDE THE CITY WITH A COPY OF PERMIT PRIOR TO RECEIVING A GRADING/CONSTRUCTION PERMIT. THE CONTRACTOR IS RESPONSIBLE FOR ALL FEES ASSOCIATED WITH THE PERMIT.
- IF THE CONTRACTOR TRANSFERS RESPONSIBILITY FOR STORMWATER DISCHARGES TO ANOTHER ENTITY, A NOTICE OF TRANSFER AND ACCEPTANCE OF TERMS FORM SHALL BE SUBMITTED TO CDPHE AND A COPY TO THE CITY.
- IF THE CONTRACTOR NO LONGER HAS CONTROL OF A SPECIFIC PORTION OF A PERMITTED SITE AND WISHES TO TRANSFER COVERAGE OF THAT PORTION OF SITE TO ANOTHER, THE CONTRACTOR SHALL SUBMIT A NOTICE OF REASSIGNMENT OF PERMIT COVERAGE FORM TO THE CDPHE AND A COPY TO THE CITY.
- THE CONTRACTOR IS RESPONSIBLE FOR SUBMITTING AN INACTIVATION NOTICE FORM TO CDPHE WHEN THE SITE HAS BEEN FINALLY STABILIZED IN ACCORDANCE WITH THE SWMP. A COPY OF THE INACTIVATION NOTICE SHALL ALSO BE SUBMITTED TO THE CITY.

**CALL UTILITY NOTIFICATION  
CENTER OF COLORADO  
811  
CALL 3-BUSINESS DAYS IN ADVANCE  
BEFORE YOU DIG, GRADE, OR EXCAVATE  
FOR THE MARKING OF UNDERGROUND  
MEMBER UTILITIES.**



**NATIVE SEED GUIDLINES**

- SEEDBED PREPARATION
    - THE SEEDBED SHALL BE FREE OF DEBRIS, INCLUDING WEEDS, PLANT MATTER, ROCKS, CLOUDS AND OTHER IMPERVIOUS MATERIAL OVER 1" IN DIAMETER. SEEDBED SHALL BE SMOOTH AND FREE OF LARGE CLUMPS, FLUFFY YET FIRM, MOIST BUT NOT WET. WHEN WALKING ACROSS THE BED, A SHOE IMPRINT IN THE SOIL SHOULD NOT BE DEEPER THAN 1". BEFORE INCORPORATION OF AMENDMENT, COT WILL INSPECT THE SEEDBED.
    - PREPARING THE SEEDBED SHOULD BE TIMED WITH APPROPRIATE PLANTING DATES TO CONSERVE SOIL MOISTURE AND PREVENT WIND AND WATER EROSION. SEEDING OF IRRIGATED GRASSES CAN OCCUR ANY TIME DURING THE GROWING SEASON, BUT FOR BEST AND QUICKEST RESULTS, WARM SEASON GRASSES SHOULD BE SEEDDED IN MAY AND NO LATER THAN JULY. DRYLAND SEEDING OF COOL SEASON NON-IRRIGATED GRASSES SHOULD OCCUR BETWEEN NOVEMBER 15TH & APRIL 15TH. DRYLAND SEEDING OF NON-IRRIGATED WARM SEASON GRASSES SHOULD OCCUR BETWEEN MARCH 15TH & JUNE 15TH.
    - SOIL AMENDMENT: MYCORRHIZAL PRODUCT TO BE MIXED INTO SEED MIX AT SEED SUPPLIER OR IN SEED BOX OR INCORPORATED INTO SEED BED TO A MINIMUM DEPTH OF 8". BIOSOL PRODUCT TO BE BROADCAST ON PLANTED SEED BED.
      - 20 LBS/AC GRANULAR ENDO MYCORRHIZAL BROADCAST OR 2 LBS/ACRE MIXED WITH SEED IN SEED BOX AND 1200 LBS/AC (IF HIGH ORGANIC RESULTS AFTER SOIL TEST) TO1800 LBS/AC (IF LOW ORGANIC RESULTS AFTER SOIL TEST) BIOSOL MIX 7-2-3 TOPICALLY APPLIED AFTER DRILLING (AVAILABLE AT ROCKY MOUNTAIN BIO PRODUCTS, DENVER, 303-696-8964)
      - OR 60 LBS/AC OF MYCORRHIZAL INNOCULUM AM 120 BROADCAST AND BIOSOL AT 1500 LBS/AC TOPICALLY APPLIED AFTER DRILLING (AVAILABLE AT PAWNEE BUTTES SEED COMPANY, GREELEY, 970-356-7002 OR 800-782-5947) OR
      - APPROVED EQUAL.
  - PLANTING
    - BEFORE PLANTING, COT WILL APPROVE INCORPORATION OF AMENDMENT INTO SEEDBED.
    - SEE SPECIFICATIONS FOR SEED MIX AND REQUIREMENTS.
    - SEEDING SHALL BE DONE IMMEDIATELY AFTER SOIL PREPARATION TO DISCOURAGE WEED COMPETITION. SEED SHALL BE EVENLY DISTRIBUTED OVER AMENDED GROUND ON A STILL DAY INTO A SLIGHTLY MOIST SEEDBED, USING AN APPROVED GRASS DRILL WITH DOUBLE DISC OPENERS, PACKER WHEELS AND (FLUFFY) SEED BOXES AS APPROPRIATE. AS APPROPRIATE, DRILL EQUAL QUANTITY OF SEED 1/2" DEEP IN TWO DIRECTIONS AT RIGHT ANGLES TO EACH OTHER. HAND-BROADCAST METHODS SHALL BE AT DOUBLE THE SEEDING RATE AND SHALL BE "RAKED IN" OR OTHERWISE COVERED WITH SOIL TO A DEPTH OF 1/2". HYDRAULIC SEEDING CAN ONLY BE USED IN AREAS NOT ACCESSIBLE FOR MACHINE METHODS; SEED AND MULCH SHALL NOT BE APPLIED IN THE SAME OPERATION.
    - ALL SEEDED AREAS SHALL BE HYDRO-MULCHED WITH WOOD (NOT PAPER) FIBER IN A SEPARATE APPLICATION AFTER DRILLING. MIX WATER, 2000 LBS/AC OF MAT FIBER MULCH AND 100 LBS/AC OF TACKIFIER, OR AT MANUFACTURER'S RECOMMENDED RATES, WHICHEVER IS GREATER. HYDRAULIC MULCHING SHALL NOT BE PERFORMED IN THE PRESENCE OF FREE SURFACE WATER. IN AREAS NOT ABLE TO BE HYDROMULCHED, COVER ALL SEEDED AREA WITH 100% BIODEGRADABLE STRAW BLANKETS WITH BIODEGRADABLE BLANKET PINS.
    - IF IRRIGATED, WITHIN 12 HOURS OF SEEDING, WATER SEEDED AREA FREQUENTLY AND LIGHTLY. WATER ENOUGH TO KEEP THE SOIL MOIST, BUT NOT SO HEAVILY AS TO CAUSE SOIL WASHING AND LOSS OF THE GRASS SEED.
    - SEEDED SLOPES APPROVED AS 3:1 SHALL BE COVERED WITH BIODEGRADABLE EROSION CONTROL SEED BLANKETS.
    - GERMINATION DURING THE GROWING SEASON IS EXPECTED WITHIN 3-6 WEEKS. SPOT REGRADING, RESEEDING AND MULCHING SHALL IMMEDIATELY BE REQUIRED FOR AREAS OF LITTLE OR NO GERMINATION AND TO REPAIR AREAS DAMAGED BY EROSION, WIND, VANDALISM, FIRE OR OTHER CAUSES.
    - FLOWER/FORBE SEED MAY BE ADDED TO MIXES WHERE GRASSES WILL NOT BE MOWED, BUT SHALL NOT SUBSTITUTE FOR QUANTITIES OF SEED. SPECIES THAT READILY RESEED THEMSELVES SEEM TO WORK BEST
  - ESTABLISHMENT
    - KEEPING THE SEED MOIST IS THE KEY TO GERMINATION AND INITIAL GROWTH. HIGH SEEDING RATES, SHALLOW DRILLING OF NO GREATER THAN 1/2" AND NARROW (2-4") SEEDER ROW SPACING HAVE PROVEN TO BE CRITICAL IN OBTAINING RAPID ESTABLISHMENT.
- IF IRRIGATED, DESIGN THE IRRIGATION SYSTEM FOR HEAD TO HEAD COVERAGE, USING ROTOR AND SPRAY HEADS WITH MATCHED PRECIPITATION RATES.
    - ESTABLISHMENT IRRIGATION MEANS APPLYING WATER A MINIMUM 2 TIMES/DAY UNTIL SEED GERMINATES TO THE THREE LEAF STAGE. AFTER THE THREE LEAF STAGE AND UNTIL THE GRASS IS 3-4" TALL, WATER 2 TIMES/DAY WITH A TOTAL 3/10" WATER/DAY.
    - AFTER THE FIRST MOWING AND FOR THE NEXT TWO GROWING SEASONS (APRIL-OCTOBER), WATER 1" EVERY TWO WEEKS. ADJUST ESTABLISHMENT IRRIGATION INCHES BY NATURAL PRECIPITATION AMOUNTS.
  - THE ESTABLISHMENT PERIOD FOR IRRIGATED SEED CAN BE A MINIMUM OF TWO GROWING SEASONS. AFTER TWO SEASONS, WATER IS APPLIED AS DESIRED TO CREATE A PARTICULAR LANDSCAPE STYLE, GENERALLY 1" WATER/MONTH. ESTABLISHMENT OF NON-IRRIGATED SEED CAN TAKE THREE TO FIVE GROWING SEASONS OR MORE.
  - TREES AND SHRUBS IN NATURAL SEED AREAS (CHOSEN FROM ULTRA-LOW WATER DEMAND LIST) REQUIRE IRRIGATION ZONED SEPARATELY FROM SEEDED AREAS.
- MAINTENANCE / WEED CONTROL
    - MOWING
      - TIMELY MOWING OPERATIONS ARE THE INDUSTRY STANDARD USED TO MANAGE WEED CONTROL WITHOUT CHEMICALS. NO MOWING FOR THE FIRST SIX WEEKS AFTER SEEDS SPROUT; MOW WEEDS BEFORE ANNUAL SEED SET. IT MAY BE NECESSARY TO MOW DURING THE FIRST GROWING SEASON, DEPENDING ON WHEN GRASS WAS SEEDED. IT IS USUALLY NECESSARY TO MOW IN THE SECOND YEAR, DEPENDING ON TIMING AND AMOUNT OF ADDITIONAL REQUIRED RESEEDING.
      - DRYLAND AREAS SHOULD BE MOWED WHEN WEEDS REACH 8" OR EVERY 45 DAYS. IRRIGATED AREAS SHOULD BE MOWED EVERY THREE WEEKS OR WHEN GRASS REACHES A MAXIMUM HEIGHT OF 12".
      - MOW GRASS WITH A FLAIL TYPE MOWER, NOT A SICKLE MOWER, TO A HEIGHT OF 6". THE GOAL OF MOWING IS TO KNOCK DOWN THE WEEDS AND JUST SKIM THE TOPS OF THE NEW GRASS. REMOVE WEEDS BY HAND OVER 6-8" TALL THAT ARE NOT CONTROLLED BY MOWING, GENERALLY ONCE A MONTH
    - CHEMICAL TREATMENT
      - FOR PERENNIAL WEED CONTROL, USE SPOT CHEMICAL SPRAYING OR HAND WEEDING AFTER GRASS PLANTS ARE UP AND FAIRLY MATURE, MINIMUM PAST THE THREE TO FIVE LEAF STAGE. REMOVE WEEDS BY HAND OVER 6-8" TALL THAT ARE NOT CONTROLLED BY CHEMICAL TREATMENT, GENERALLY ONCE A MONTH.
      - APPLY HERBICIDE ONLY WITH THE WRITTEN APPROVAL OF THE CITY AND AS RECOMMENDED BY A PROFESSIONAL APPLICATOR. APPLY A SELECTIVE PRE- AND POST-GERMINATION HERBICIDE THAT IS LABELED FOR USE WITH THE SPECIES LISTED ON THE SEED MIX, TO CONTROL WEEDS FOR THE MAINTENANCE PERIOD BEFORE INITIAL ACCEPTANCE AND DURING THE WARRANTY PERIOD BETWEEN INITIAL AND FINAL ACCEPTANCE.
      - THE USE OF JOURNEY SELECTIVE, PRE-EMERGENT HERBICIDE OR EQUIVALENT SHALL BE REQUIRED IN AREAS INFESTED WITH CHEATGRASS (BROMUS TECTORUM) AND OTHER GRASSY WEEDS. JOURNEY SHALL BE APPLIED IN LATE SUMMER PRIOR TO GERMINATION OF CHEATGRASS AND OTHER WINTER ANNUAL WEEDS.
      - HERBICIDE APPLICATION FOR CONTROL OF ANNUAL WINTER GROWING WEEDS USUALLY OCCURS NEAR AUGUST 15TH AND FOR PERENNIAL WEEDS NEAR OCTOBER 15TH.
    - LITTER AND DEBRIS REMOVAL: REMOVE ALL LITTER AND DEBRIS LARGER THAN TWO INCHES IN SIZE, SUCH AS ROCKS, PLASTIC, PAPER, METAL AND GLASS AND DISPOSE OF OFF SITE.
  - CITY ACCEPTANCE CRITERIA FOR SEEDED AREA
    - INITIAL ACCEPTANCE MAY OCCUR WHEN THE CITY HAS RECEIVED AND APPROVED ALL PRODUCT CERTIFICATIONS AND QUANTITIES AND GIVEN WRITTEN ACKNOWLEDGEMENT THAT THE DESIGNATED AREA HAS BEEN PREPARED, SEEDED, MULCHED AND MAINTAINED TO MEET THE SPECIFICATION REQUIREMENTS.
      - CONTRACTOR SHALL MAINTAIN SEEDED AREA UNTIL INITIAL ACCEPTANCE.
      - REGRADING, RESEEDING, REMULCHING AND WEED CONTROL IS REQUIRED UNTIL INITIAL ACCEPTANCE FOR AREAS OF LITTLE OR NO SEED GERMINATION AND TO REPAIR AREAS DAMAGED BY EROSION, WIND, VANDALISM, FIRE OR OTHER CAUSES.
    - FINAL ACCEPTANCE MAY OCCUR ONE YEAR AFTER INITIAL ACCEPTANCE WHEN THE STAND OF GRASS DISPLAYS UNIFORM COVERAGE AT MINIMUM THREE TO FIVE LEAF STAGE OF THE SEED MIX PLANTED (MINIMUM 80% HEALTHY GRASS COVERAGE OVER ANY 10 SQUARE FOOT AREA AND BARE SPOTS NOT EXCEEDING 10" BY 10"), WITH ALL SPECIES OF THE MIX BEING WELL REPRESENTED, MINIMAL WEEDS PRESENT AND THE AREA FREE OF SURFACE IRREGULARITIES (NO RILLS & GULLIES), AS DETERMINED BY THE CITY.
      - ANY AREAS THAT DO NOT COMPLY WITH FINAL ACCEPTANCE CRITERIA SHALL BE RESEEDED BY THE CONTRACTOR IN ACCORDANCE WITH THESE SPECIFICATIONS, USING SPECIFIED MATERIALS AND METHODS.
      - HYDROMULCH MAY NOT BE REQUIRED IN RESEEDED AREAS.

**SWMP BMP MAINTENANCE NOTES**

- BMP'S SHALL BE INSTALLED BEFORE ANY EARTH DISTURBING ACTIVITIES COMMENCE.
- STORMWATER DISCHARGES FROM CONSTRUCTION ACTIVITIES SHALL NOT CAUSE, HAVE THE REASONABLE POTENTIAL TO CAUSE, OR MEASURABLY CONTRIBUTE TO AN EXCEEDANCE OF ANY WATER QUALITY STANDARD.
- CONSTRUCTION SHALL BE PHASED IN A MANNER TO LIMIT EARTH DISTURBING ACTIVITIES (I.E. THE ENTIRE PROJECT SITE SHOULD NOT BE DISTURBED IF CONSTRUCTION WILL ONLY BE OCCURRING IN ONE PARTICULAR SECTION).
- SEDIMENT CAUSED BY ACCELERATED SOIL EROSION SHALL BE REMOVED FROM RUNOFF WATER BEFORE IT LEAVES THE CONSTRUCTION SITE.
- BULK STORAGE STRUCTURES FOR PETROLEUM PRODUCTS AND ANY OTHER CHEMICALS SHALL HAVE SECONDARY CONTAINMENT OR EQUIVALENT PROTECTION TO CONTAIN ALL SPILLS AND PREVENT ANY SPILLED MATERIAL FROM ENTERING STATE WATERS.
- A COPY OF THE SWMP AND SITE MAPS MUST BE AVAILABLE AT ALL TIMES ON THE CONSTRUCTION SITE UNLESS OTHERWISE APPROVED BY CDPHE OR THE CITY.
- THE SWMP AND SITE MAPS SHALL BE CONTINUOUSLY UPDATED TO REFLECT NEW OR REVISED BEST MANAGEMENT PRACTICES (BMP'S) DUE TO CHANGES IN DESIGN, CONSTRUCTION, OPERATION, OR MAINTENANCE OF THE CONSTRUCTION SITE. UPDATES MUST BE MADE WITHIN 72 HOURS FOLLOWING THE CHANGE IN BMP'S.
- THE CONTRACTOR SHALL INSPECT THE CONSTRUCTION SITE (INCLUDING ALL BMP'S, STORAGE CONTAINERS, AND CONSTRUCTION EQUIPMENT) A MINIMUM OF EVERY 14 CALENDAR DAYS AND WITHIN 24 HOURS AFTER A PRECIPITATION EVENT OR SNOW MELT THAT CAUSES SURFACE EROSION. INSPECTIONS SHALL CONTINUE UNTIL AN INACTIVATION NOTICE IS FILED WITH CDPHE.
- THE CONTRACTOR SHALL KEEP A RECORD OF ALL INSPECTIONS ON SITE AND AVAILABLE FOR REVIEW BY CDPHE OR CITY STAFF. INSPECTION REPORTS MUST IDENTIFY ANY INCIDENTS OF NON-COMPLIANCE WITH THE TERMS AND CONDITIONS OF THE PERMIT.
- BMP'S REQUIRING MAINTENANCE OR ADJUSTMENT SHALL BE REPAIRED IMMEDIATELY AFTER OBSERVATION OF THE FAILING BMP.
- FOR ALL INSTANCES OF NONCOMPLIANCE BASED ON ENVIRONMENTAL HAZARDS AND CHEMICAL SPILLS AND RELEASES, ALL NEEDED INFORMATION MUST BE PROVIDED ORALLY TO CDPHE SPILL REPORTING LINE (24-HOUR NUMBER FOR ENVIRONMENTAL HAZARDS AND CHEMICAL SPILLS AND RELEASES: 1-877-518-5608) WITHIN 24 HOURS FROM THE TIME THE CONTRACTOR COMES AWARE OF THE CIRCUMSTANCES.
- STRAW BALES SHALL NOT BE USED FOR PRIMARY EROSION OR SEDIMENT CONTROL (I.E. STRAW BALES MAY BE USED FOR REINFORCEMENT BEHIND ANOTHER BMP SUCH AS SILT FENCE).
- BMP'S INTENDED FOR SHEET FLOW SEDIMENT RUNOFF SHALL BE PLACED PARALLEL TO THE SLOPE.
- ALL BMP'S SHALL BE CLEANED WHEN SEDIMENT LEVELS ACCUMULATE TO HALF THE DESIGN OF THE BMP UNLESS OTHERWISE SPECIFIED.
- A VEHICLE TRACKING PAD (VTP) SHALL BE PLACED AT ALL EXITS FROM THE SITE TO PREVENT TRACK-OUT ONTO CITY STREETS. IF TRACK-OUT DOES OCCUR, THE CONTRACTOR SHALL IMMEDIATELY SWEEP THE STREET OF DEBRIS.
- ALL SEDIMENT COLLECTED IN BMP'S SHALL BE REMOVED UPON INITIAL ACCEPTANCE.
- PERMANENT EROSION CONTROL MEASURES FOR SLOPES, CHANNELS, DITCHES, OR ANY DISTURBED LAND AREA SHALL BE COMPLETED WITHIN 14 CALENDAR DAYS AFTER FINAL GRADING OR THE FINAL EARTH DISTURBANCE HAS BEEN COMPLETED. WHEN IT IS NOT POSSIBLE TO PERMANENTLY STABILIZE A DISTURBED AREA AFTER AN EARTH DISTURBANCE HAS BEEN COMPLETED OR WHERE SIGNIFICANT EARTH DISTURBANCE ACTIVITY CEASES, TEMPORARY SOIL EROSION CONTROL MEASURES SHALL BE IMPLEMENTED WITHIN 14 CALENDAR DAYS. TEMPORARY EROSION CONTROL MEASURES SHALL BE MAINTAINED UNTIL PERMANENT SOIL EROSION MEASURES ARE IMPLEMENTED.
- FINAL STABILIZATION HAS BEEN ACHIEVED WHEN ALL EARTH DISTURBING ACTIVITIES AT THE SITE HAVE BEEN COMPLETED, AND UNIFORM VEGETATIVE COVER HAS BEEN ESTABLISHED WITH AN INDIVIDUAL PLANT DENSITY OF AT LEAST 70 PERCENT OF PRE-DISTURBANCE LEVELS, OR EQUIVALENT PERMANENT, PHYSICAL EROSION REDUCTION METHODS HAVE BEEN EMPLOYED.
- ALL TEMPORARY BMP'S SHALL BE REMOVED FROM THE SITE UPON SUBMITTING THE INACTIVATION NOTICE.
- ALL SITE WASTES (INCLUDING TRASH AND BUILDING MATERIALS) MUST BE PROPERLY MANAGED TO PREVENT POTENTIAL POLLUTION OF STATE WATERS.
- THE CONTRACTOR SHALL INSTALL SEDIMENT CONTROL LOGS ON THE DOWNSTREAM PERIMETER OF ALL STOCKPILES IN ACCORDANCE WITH THE APPROVED GRADING, EROSION, AND SEDIMENT CONTROL PLAN. THE COST FOR SEDIMENT CONTROL LOGS SHALL NOT BE PAID SEPARATELY.
- THE CONTRACTOR SHALL SWEEP THE STREET PERIODICALLY THROUGHOUT THE DAY AND AT THE END OF THE WORK DAY IN ACCORDANCE WITH THE APPROVED GRADING, EROSION, AND SEDIMENT CONTROL PLAN. THE COST FOR STREET SWEEPING SHALL NOT BE PAID SEPARATELY.



**FOR BID**  
NOT TO BE USED FOR CONSTRUCTION  
August 23, 2023  
DATE PRINTED  
OLSSON

OLSSON

TEL 303.237.2072  
FAX 303.237.2659  
www.olsson.com  
15205 Raleigh Street, Suite 400  
Denver, CO 80204

NOTE  
THIS DOCUMENT HAS BEEN RELEASED BY OLSSON ONLY FOR REVIEW BY REGULATORY AGENCIES AND OTHER PROFESSIONALS, AND IS SUBJECT TO CHANGE. THIS DOCUMENT IS NOT TO BE USED FOR CONSTRUCTION.

OLSSON ASSUMES NO RESPONSIBILITY FOR EXISTING UTILITY LOCATIONS (HORIZONTAL OR VERTICAL). THE EXISTING UTILITIES SHOWN ON THIS DRAWING HAVE BEEN PLOTTED FROM THE BEST AVAILABLE INFORMATION. IT IS HOWEVER THE RESPONSIBILITY OF THE CONTRACTOR TO FIELD VERIFY THE LOCATION OF ALL UTILITIES PRIOR TO THE COMMENCEMENT OF ANY CONSTRUCTION ACTIVITIES.

REV. NO.	DATE	REVISIONS DESCRIPTION

EROSION AND SEDIMENT CONTROL NOTES  
 THORNTON VAC TRUCK DUMP STATION  
 THORNTON, CO

2023

drawn by: KP  
checked by: CU  
approved by: DK  
QA/QC by: DK  
project no.: 018-2048  
drawing no.: W TLL 82042  
date: 8.23.2023

SHEET  
3 of 10

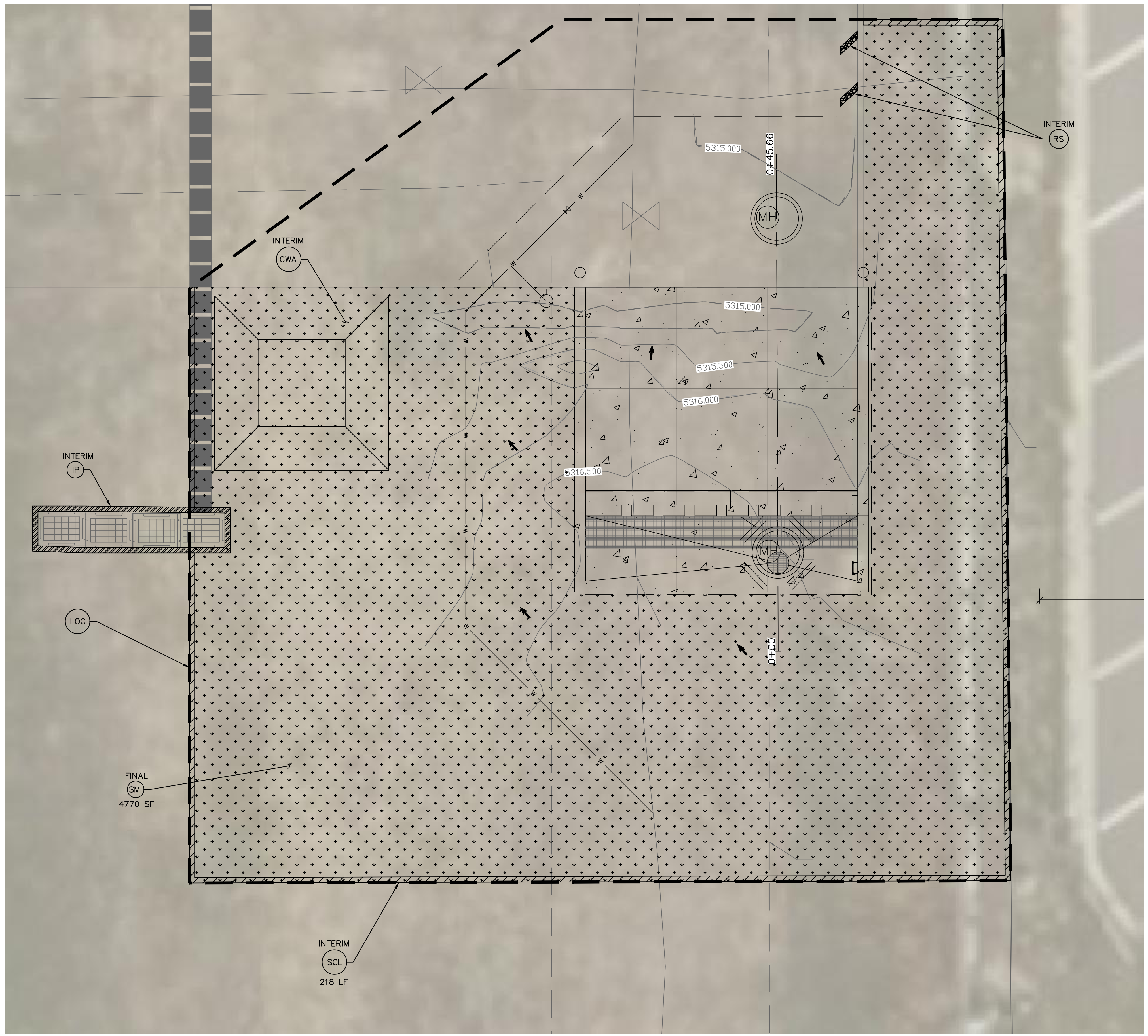
DWG: F:\2018\2001-2500\018-2048-Design\AutoCAD\Final Plans\Streets\WTRS\DWG\W.ERC\_82048.dwg  
 DATE: Aug\_23\_2023 1:52pm  
 USER: gmaidl  
 FloorPlan-x-ConsultantExport\FloorPlan



DWG: F:\2018\2001-2500\018-2048-Design\AutoCAD\Final Plans\WTRs\DWG\W.ERC\_82048.dwg USER: gmaidl  
 DATE: Aug\_23\_2023 1:52pm XREFS: w\_ttblk\_82048 W\_DESIGN\_82048 171001X\_P-Site FloorPlan-x-ConsultantExportFloorPlan

**EROSION CONTROL LEGEND**

- INLET PROTECTION (IP)
- CONCRETE WASHOUT AREA (CWA)
- SEDIMENT CONTROL LOG (SCL)
- ROCK SOCK (RS)
- SEED AND MULCH (BY CITY OF THORNTON) (SM)
- LIMITS OF CONSTRUCTION
- DRAINAGE DIRECTION



**FOR BID**  
 NOT TO BE USED FOR CONSTRUCTION  
 August 23, 2023  
 DATE PRINTED  
 OLSSON



CALL UTILITY NOTIFICATION  
 CENTER OF COLORADO  
**811**  
 CALL 3-BUSINESS DAYS IN ADVANCE  
 BEFORE YOU DIG, GRADE, OR EXCAVATE  
 FOR THE MARKING OF UNDERGROUND  
 MEMBER UTILITIES.



OLSSON

1525 Raleigh Street, Suite 400  
 Denver, CO 80204  
 TEL 303.237.2072  
 FAX 303.237.2659  
 www.olsson.com

**NOTE**  
 THIS DOCUMENT HAS BEEN  
 RELEASED BY OLSSON ONLY  
 FOR REVIEW BY REGULATORY  
 AGENCIES AND OTHER  
 PROFESSIONALS, AND IS  
 SUBJECT TO CHANGE. THIS  
 DOCUMENT IS NOT TO BE  
 USED FOR CONSTRUCTION.

OLSSON ASSUMES NO  
 RESPONSIBILITY FOR EXISTING  
 UTILITY LOCATIONS  
 (HORIZONTAL OR VERTICAL).  
 THE EXISTING UTILITIES SHOWN  
 ON THIS DRAWING HAVE BEEN  
 PLOTTED FROM THE BEST  
 AVAILABLE INFORMATION. IT IS  
 HOWEVER THE RESPONSIBILITY  
 OF THE CONTRACTOR TO FIELD  
 VERIFY THE LOCATION OF ALL  
 UTILITIES PRIOR TO THE  
 COMMENCEMENT OF ANY  
 CONSTRUCTION ACTIVITIES.

REV. NO.	DATE	REVISIONS DESCRIPTION

EROSION CONTROL PLAN	REVISIONS
THORNTON VAC TRUCK DUMP STATION	2023
THORNTON, CO	

drawn by: KP  
 checked by: CU  
 approved by: DK  
 QA/QC by: DK  
 project no.: 018-2048  
 drawing no.: W TTL 82042  
 date: 8.23.2023











NOTE  
THIS DOCUMENT HAS BEEN  
RELEASED BY OLSSON ONLY  
FOR REVIEW BY REGULATORY  
AGENCIES AND OTHER  
PROFESSIONALS, AND IS  
SUBJECT TO CHANGE. THIS  
DOCUMENT IS NOT TO BE  
USED FOR CONSTRUCTION.

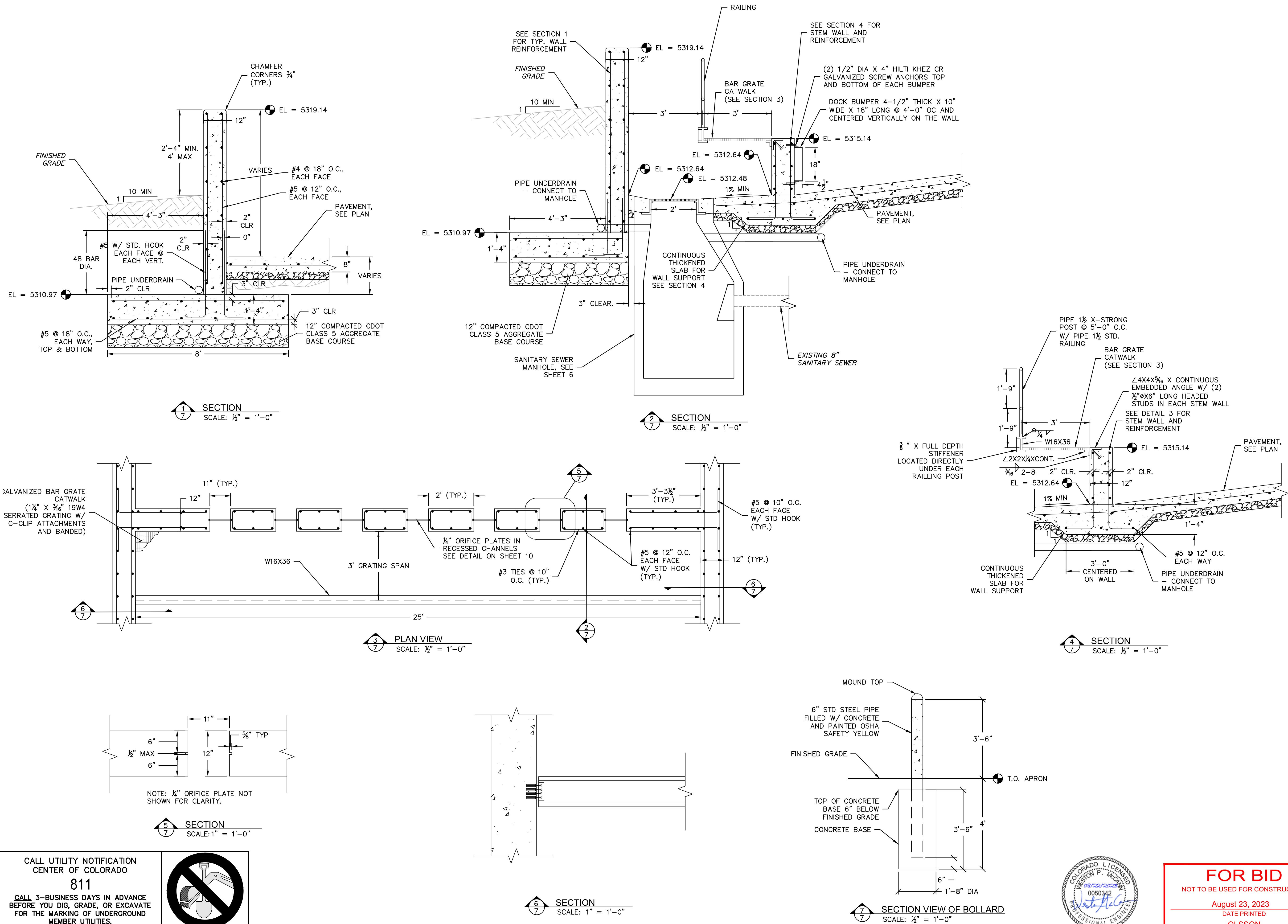
OLSSON ASSUMES NO  
RESPONSIBILITY FOR EXISTING  
UTILITY LOCATIONS  
(HORIZONTAL OR VERTICAL).  
THE EXISTING UTILITIES SHOWN  
ON THIS DRAWING HAVE BEEN  
PLOTTED FROM THE BEST  
AVAILABLE INFORMATION. IT IS  
HOWEVER THE RESPONSIBILITY  
OF THE CONTRACTOR TO FIELD  
VERIFY THE LOCATION OF ALL  
UTILITIES PRIOR TO THE  
COMMENCEMENT OF ANY  
CONSTRUCTION ACTIVITIES.

REV. NO.	DATE	REVISIONS DESCRIPTION

2023

STRUCTURAL DETAILS  
THORNTON VAC TRUCK DUMP STATION  
THORNTON, CO

drawn by: KP  
checked by: CU  
approved by: DK  
QA/QC by: DK  
project no.: 018-2048  
drawing no.: W TLL 82042  
date: 8.23.2023



DWG: F:\2018\2001-2500\018-2048-Design\AutoCAD\Final Plans\Sheets\WTR\DWG\W\_SITE\_82048.dwg  
 DATE: Aug 23, 2023 1:53pm  
 USER: grmsid  
 FloorPlan-x-ConsultantExport\FloorPlan  
 171001X\_P-Site  
 W\_DESIGN\_82048  
 XREFS: W\_TTLBLK\_82048

CALL UTILITY NOTIFICATION  
CENTER OF COLORADO  
811  
CALL 3-BUSINESS DAYS IN ADVANCE  
BEFORE YOU DIG, GRADE, OR EXCAVATE  
FOR THE MARKING OF UNDERGROUND  
MEMBER UTILITIES.



**FOR BID**  
NOT TO BE USED FOR CONSTRUCTION  
August 23, 2023  
DATE PRINTED  
OLSSON











