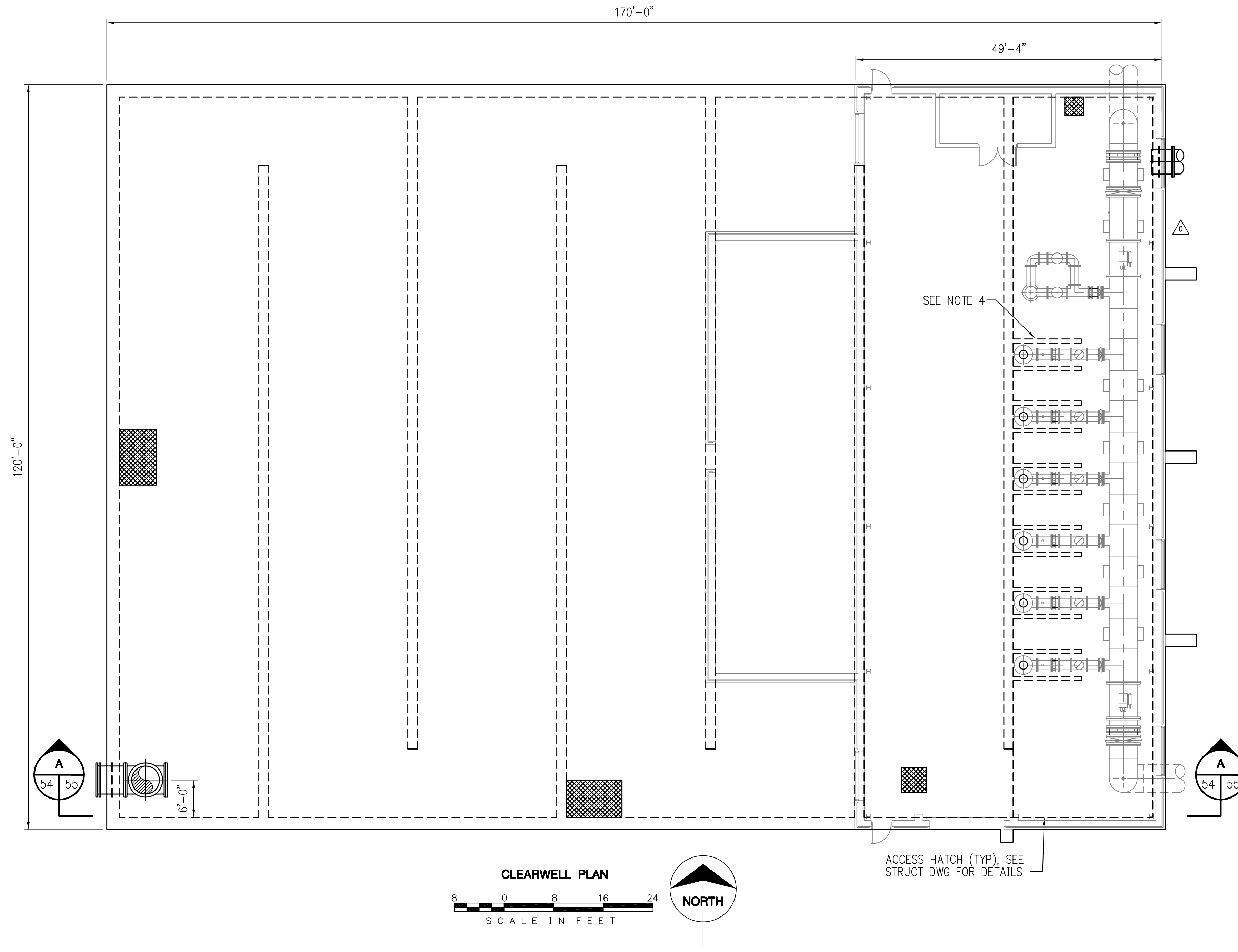


# EXHIBIT C

- NOTES:**
- CONTRACTOR SHALL REMOVE EXISTING 36"Ø STEEL PIPE FROM EXISTING CLEARWELL TO LOCATION INDICATED ON DRAWING P7 & P8.
  - CONTRACTOR SHALL ROUTE NEW 54"Ø PIPE TO TIE IN AT FINISHED WATER BIFURICATION VAULT.
  - OVERFLOW WEIR AND TROUGH NOT SHOWN FOR CLARITY, SEE STRUCT DWGS FOR DETAILS.
  - SEE STRUCT DWGS FOR BAFFLE WALL THICKNESS AND PUMP SETTING DEPTHS.
  - 48"Ø OVERFLOW PIPE NOT SHOWN. SEE STRUCTURAL DWGS FOR WALL PIPE CONNECTION.
  - SEE DWG P8 FOR ISULATED BOLTED COUPLING FOR 48"Ø OVERFLOW LINE.



Scale For Microfilming  
Millimeters  
Inches

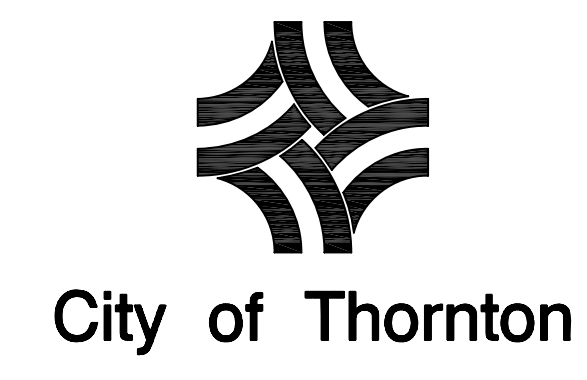
R. FULK J:\THORNTON\30735\CADD\PROCESS\AS-BUILTS\THROP054.DWG MAR 22, 2006  
COPYRIGHT © 2004 BURNS AND McDONNELL ENGINEERS, INC.

**CLEARWELL PLAN**  
SCALE IN FEET  
NORTH

no.	date	by	revision
A	02/10/04	P.D.F.	GMP BASE BID
0	04/16/04	P.D.F.	ISSUE FOR CONSTRUCTION
1	12/7/05	P.D.F.	CONFORMING TO CONSTR. RECORDS



date JANUARY 8, 2003  
designed B. YANG  
detailed R. FULK  
checked D.J.N.

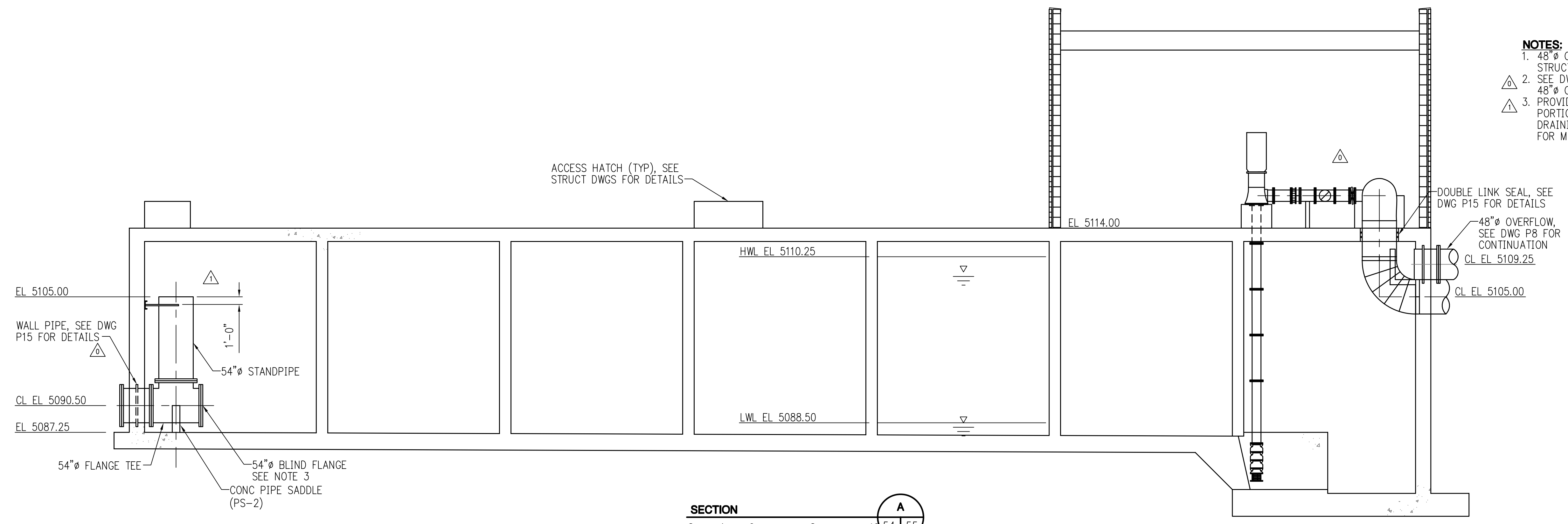


**WES BROWN WATER TREATMENT PLANT EXPANSION**  
CLEARWELL PLAN

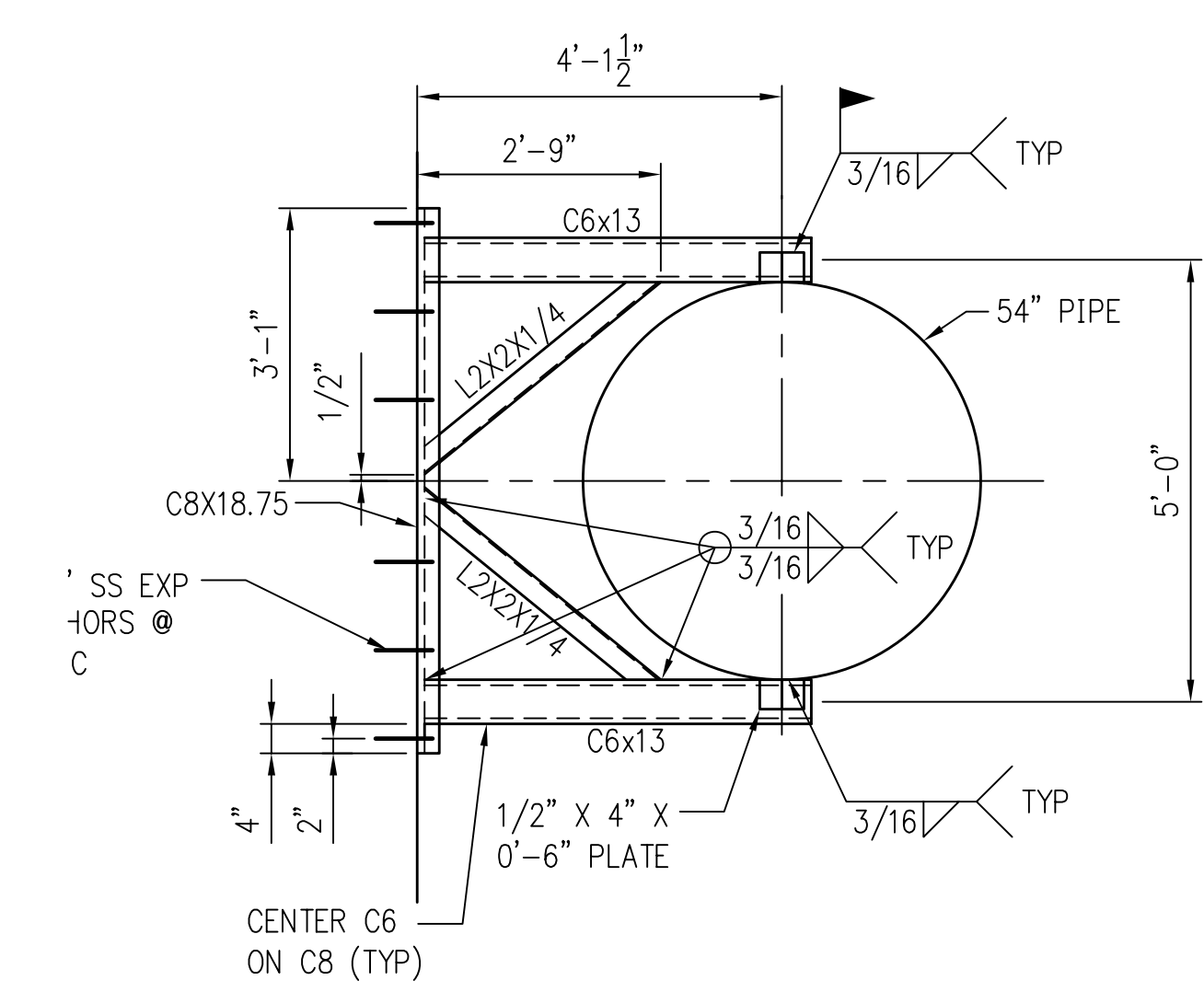
project 30735 | contract

drawing **P54** - rev. **1**

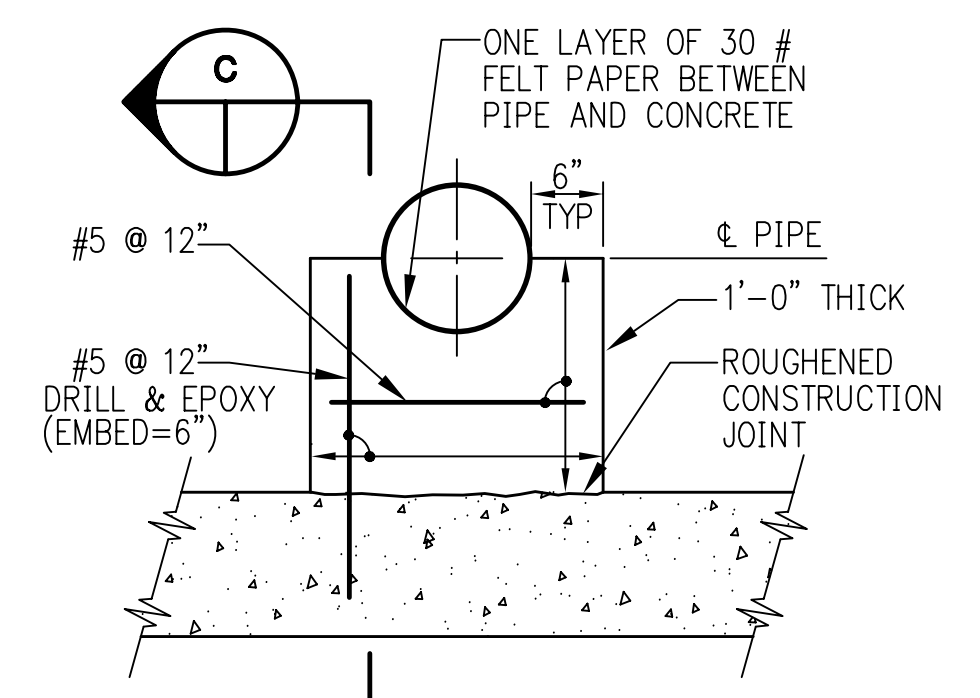
sheet of sheets  
file\THROP054.dwg 04-12-2004 09:09 RWF



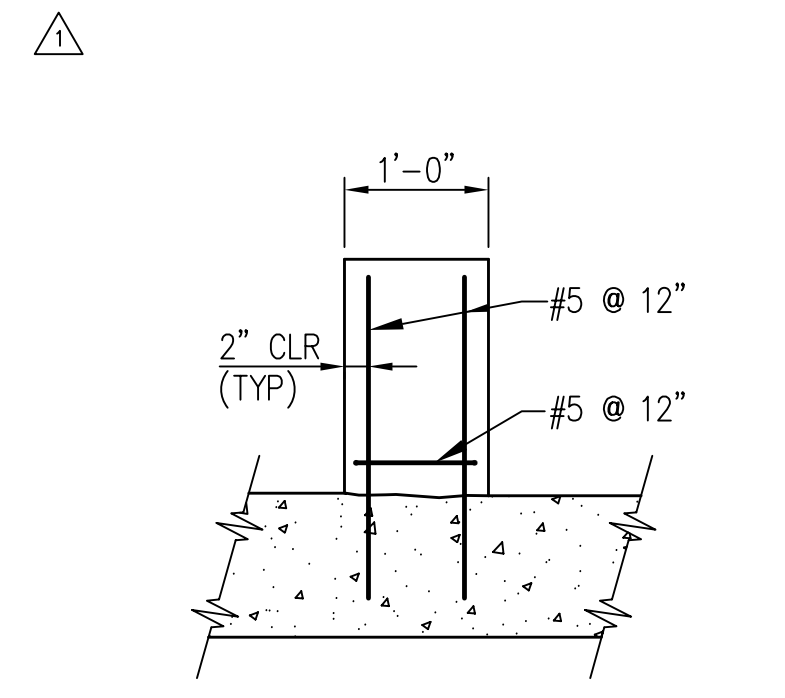
- NOTES:**
- 48" Ø OVERFLOW PIPE NOT SHOWN. SEE STRUCTURAL DWGS FOR WALL PIPE CONNECTION.
  - SEE DWG P15 FOR BOLTED COUPLING DETAIL FOR 48" Ø OVERFLOW LINE.
  - PROVIDE A 4" WIDE HOLE IN THE BOTTOM PORTION OF THE BLIND FLANGE TO ALLOW DRAINING OF THE FINISHED WATER LINE FOR MAINTENANCE.



**54" STANDPIPE SUPPORT DETAIL**



**PIPE SUPPORT DETAIL PS-2**  
NOT TO SCALE



**SECTION**  
NOT TO SCALE

Scale For Microfilming

Inches

R. FULK J:\THORNTON\30735\CADD\PROCESS\PHASE2\THORP055\_P12.DWG OCT 25, 2004  
COPYRIGHT © 2004 BURNS AND McDONNELL ENGINEERS, INC.

no.	date	by	revision
A	02/10/04	P.D.F.	GMP BASE BID
0	04/16/04	P.D.F.	ISSUE FOR CONSTRUCTION
1	10/22/04	M.A.L.	ISSUE FOR CONSTRUCTION-PHASE II
2	12/7/05	M.A.L.	CONFORMING TO CONSTR. RECORDS

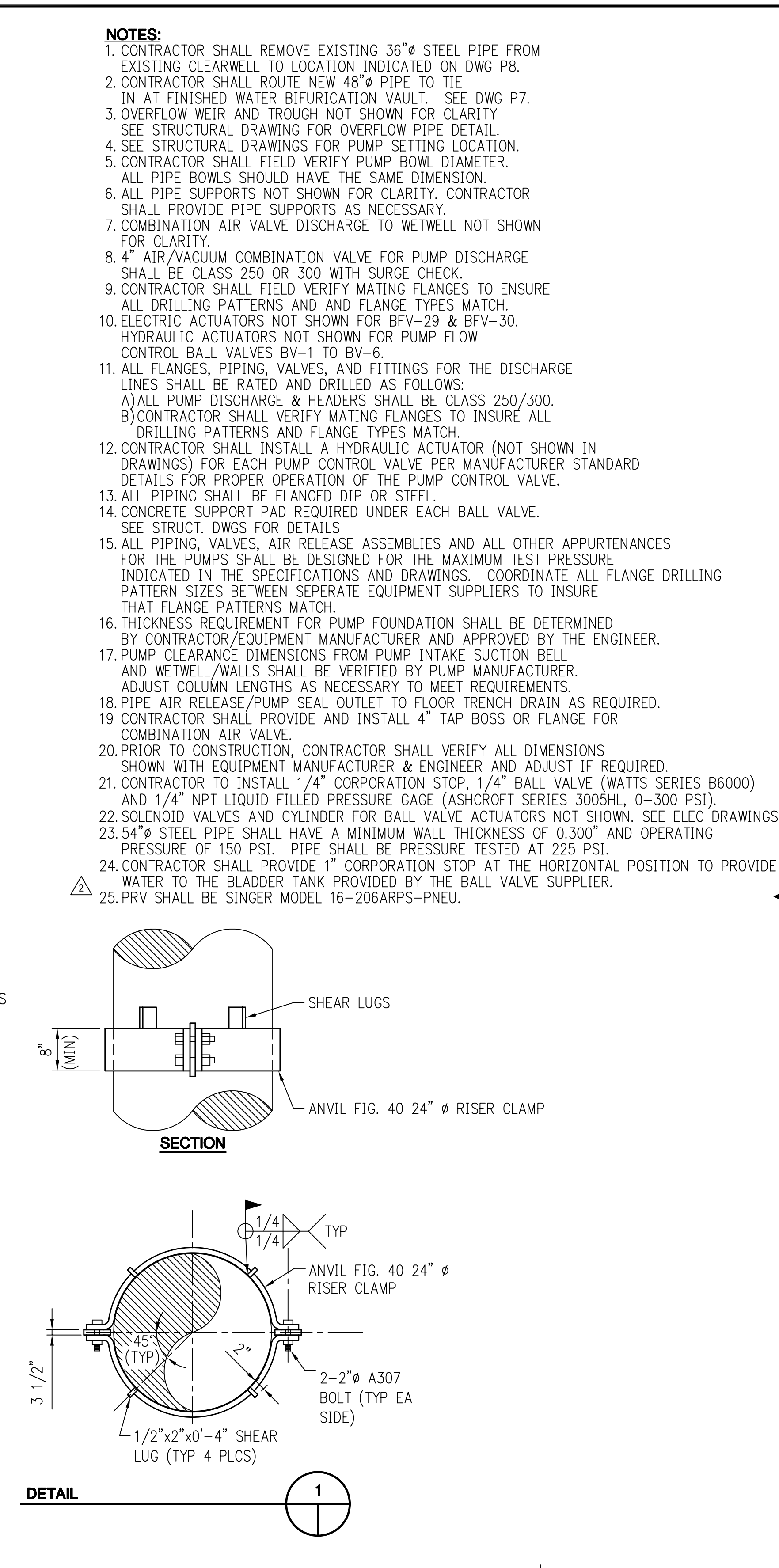
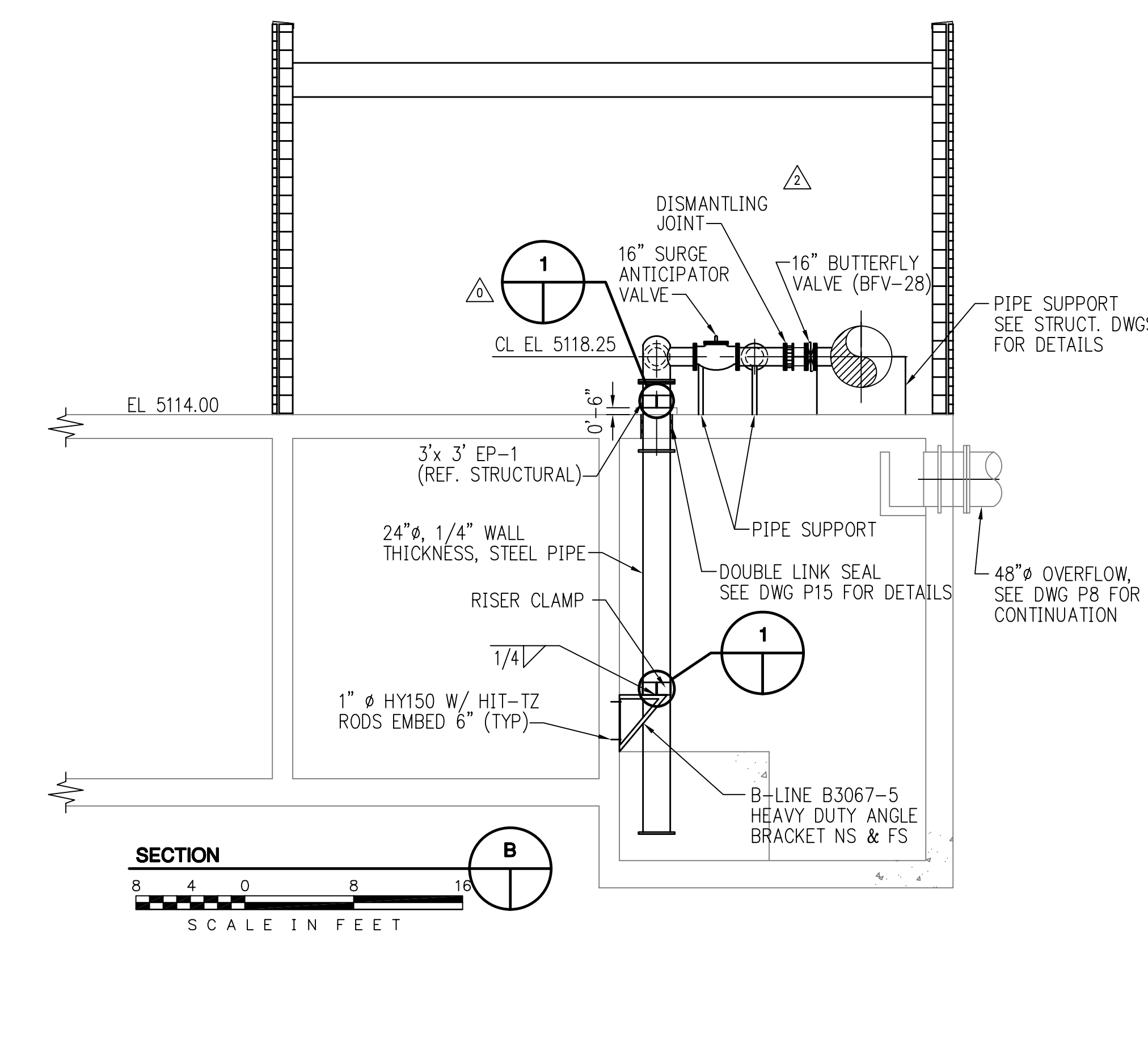
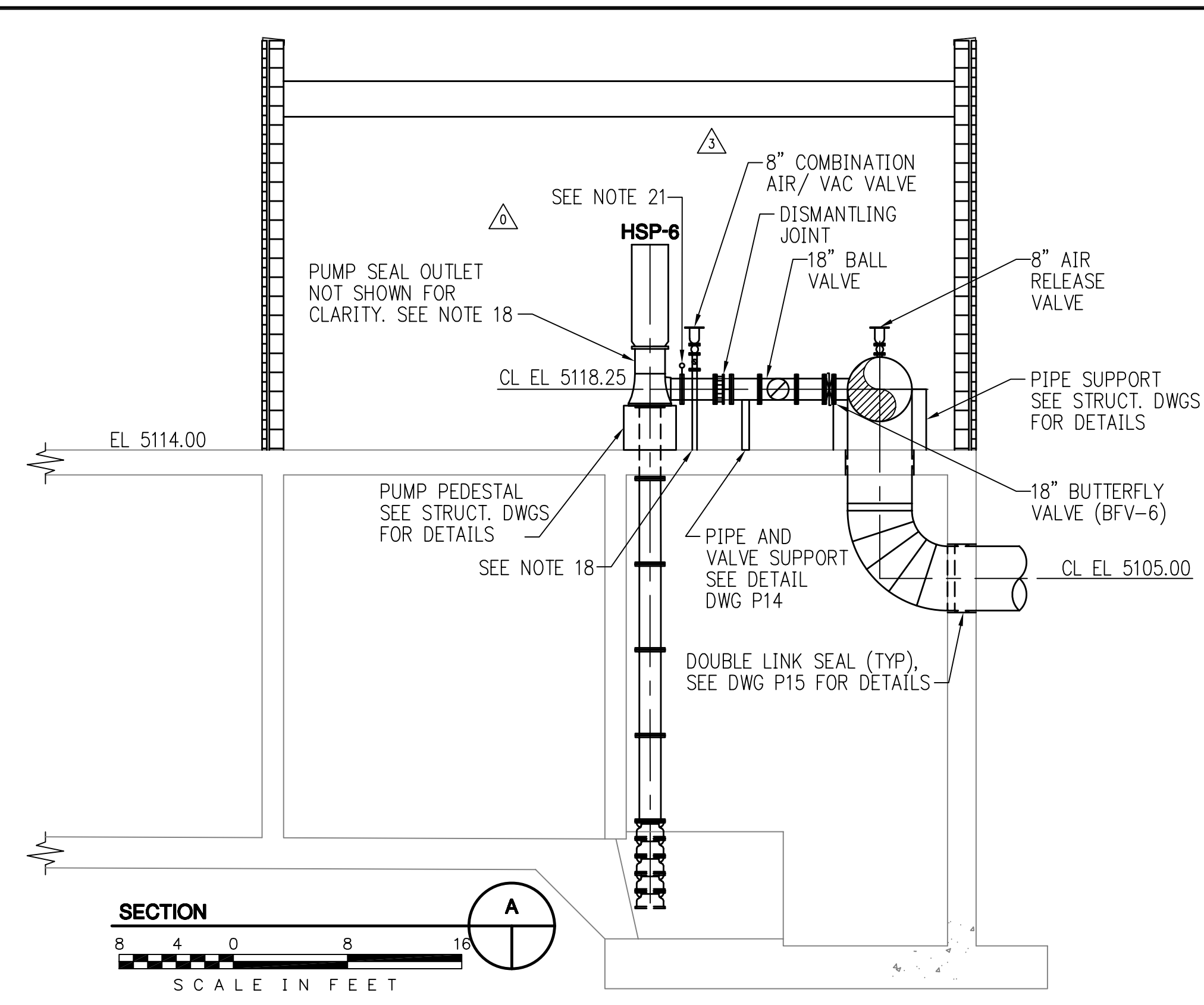
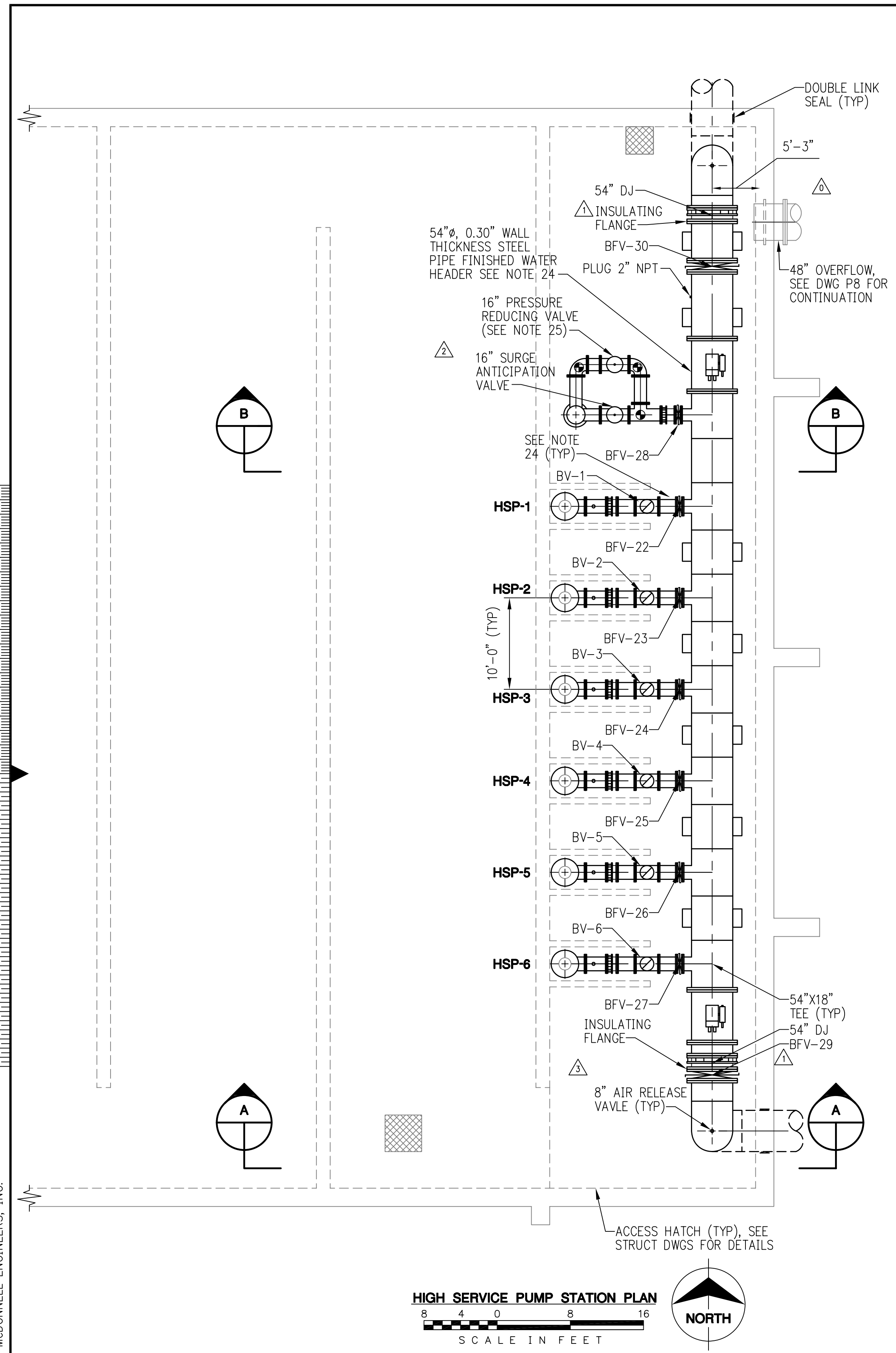


date JANUARY 8, 2003  
designed B. YANG  
detailed R. FULK  
checked D.J.N.



<b>WES BROWN WATER TREATMENT PLANT EXPANSION</b>	
CLEARWELL SECTION	
project 30735	contract
drawing <b>P55</b>	rev. <b>2</b>
sheet	of sheets
file	

R. FULK J:\THORPRO\30735\CADD\PROCESS\AS-BUILTS\THORP056.DWG MAR 22, 2006  
 COPYRIGHT © 2004 BURNS AND McDONNELL ENGINEERS, INC.



- NOTES:**
- CONTRACTOR SHALL REMOVE EXISTING 36"Ø STEEL PIPE FROM EXISTING CLEARWELL TO LOCATION INDICATED ON DWG P8.
  - CONTRACTOR SHALL ROUTE NEW 48"Ø PIPE TO TIE IN AT FINISHED WATER BIFURCATION VAULT. SEE DWG P7.
  - OVERFLOW WEIR AND TROUGH NOT SHOWN FOR CLARITY SEE STRUCTURAL DRAWING FOR OVERFLOW PIPE DETAIL.
  - SEE STRUCTURAL DRAWINGS FOR PUMP SETTING LOCATION.
  - CONTRACTOR SHALL FIELD VERIFY PUMP BOWL DIAMETER. ALL PIPE BOWLS SHOULD HAVE THE SAME DIMENSION.
  - ALL PIPE SUPPORTS NOT SHOWN FOR CLARITY. CONTRACTOR SHALL PROVIDE PIPE SUPPORTS AS NECESSARY.
  - COMBINATION AIR VALVE DISCHARGE TO WETWELL NOT SHOWN FOR CLARITY.
  - 4" AIR/VACUUM COMBINATION VALVE FOR PUMP DISCHARGE SHALL BE CLASS 250 OR 300 WITH SURGE CHECK.
  - CONTRACTOR SHALL FIELD VERIFY MATING FLANGES TO ENSURE ALL DRILLING PATTERNS AND AND FLANGE TYPES MATCH.
  - ELECTRIC ACTUATORS NOT SHOWN FOR BFV-29 & BFV-30. HYDRAULIC ACTUATORS NOT SHOWN FOR PUMP FLOW CONTROL BALL VALVES BV-1 TO BV-6.
  - ALL FLANGES, PIPING, VALVES, AND FITTINGS FOR THE DISCHARGE LINES SHALL BE RATED AND DRILLED AS FOLLOWS:  
 A) ALL PUMP DISCHARGE & HEADERS SHALL BE CLASS 250/300.  
 B) CONTRACTOR SHALL VERIFY MATING FLANGES TO INSURE ALL DRILLING PATTERNS AND FLANGE TYPES MATCH.
  - CONTRACTOR SHALL INSTALL A HYDRAULIC ACTUATOR (NOT SHOWN IN DRAWINGS) FOR EACH PUMP CONTROL VALVE PER MANUFACTURER STANDARD DETAILS FOR PROPER OPERATION OF THE PUMP CONTROL VALVE.
  - ALL PIPING SHALL BE FLANGED DIP OR STEEL.
  - CONCRETE SUPPORT PAD REQUIRED UNDER EACH BALL VALVE. SEE STRUCT. DWGS FOR DETAILS.
  - ALL PIPING, VALVES, AIR RELEASE ASSEMBLIES AND ALL OTHER APPURTENANCES FOR THE PUMPS SHALL BE DESIGNED FOR THE MAXIMUM TEST PRESSURE INDICATED IN THE SPECIFICATIONS AND DRAWINGS. COORDINATE ALL FLANGE DRILLING PATTERN SIZES BETWEEN SEPERATE EQUIPMENT SUPPLIERS TO INSURE THAT FLANGE PATTERNS MATCH.
  - THICKNESS REQUIREMENT FOR PUMP FOUNDATION SHALL BE DETERMINED BY CONTRACTOR/EQUIPMENT MANUFACTURER AND APPROVED BY THE ENGINEER.
  - PUMP CLEARANCE DIMENSIONS FROM PUMP INTAKE SUCTION BELL AND WETWELL/WALLS SHALL BE VERIFIED BY PUMP MANUFACTURER. ADJUST COLUMN LENGTHS AS NECESSARY TO MEET REQUIREMENTS.
  - PIPE AIR RELEASE/PUMP SEAL OUTLET TO FLOOR TRENCH DRAIN AS REQUIRED.
  - CONTRACTOR SHALL PROVIDE AND INSTALL 4" TAP BOSS OR FLANGE FOR COMBINATION AIR VALVE.
  - PRIOR TO CONSTRUCTION, CONTRACTOR SHALL VERIFY ALL DIMENSIONS SHOWN WITH EQUIPMENT MANUFACTURER & ENGINEER AND ADJUST IF REQUIRED.
  - CONTRACTOR TO INSTALL 1/4" CORPORATION STOP, 1/4" BALL VALVE (WATTS SERIES B6000) AND 1/4" NPT LIQUID FILLED PRESSURE GAGE (ASHCROFT SERIES 3005HL, 0-300 PSI).
  - SOLENOID VALVES AND CYLINDER FOR BALL VALVE ACTUATORS NOT SHOWN. SEE ELEC DRAWINGS.
  - 54"Ø STEEL PIPE SHALL HAVE A MINIMUM WALL THICKNESS OF 0.300" AND OPERATING PRESSURE OF 150 PSI. PIPE SHALL BE PRESSURE TESTED AT 225 PSI.
  - CONTRACTOR SHALL PROVIDE 1" CORPORATION STOP AT THE HORIZONTAL POSITION TO PROVIDE WATER TO THE BLADDER TANK PROVIDED BY THE BALL VALVE SUPPLIER.
  - PRV SHALL BE SINGER MODEL 16-206ARPS-PNEU.

no.	date	by	revision
A	02/10/04	P.D.F.	GMP BASE BID
0	04/16/04	P.D.F.	ISSUE FOR CONSTRUCTION
1	05/21/04	M.A.L.	PER RFI 86
2	02/24/05	M.A.L.	ADDITION OF PRV
3	05/4/04	M.A.L.	REVISED PER RFI 80
4	12/7/05	P.D.F.	CONFORMING TO CONSTR. RECORDS



date JANUARY 8, 2003 detailed R. FULK  
 designed B. YANG checked D.J.N.



**WES BROWN WATER TREATMENT PLANT EXPANSION**

HIGH SERVICE PUMP STATION PLAN & SECTIONS

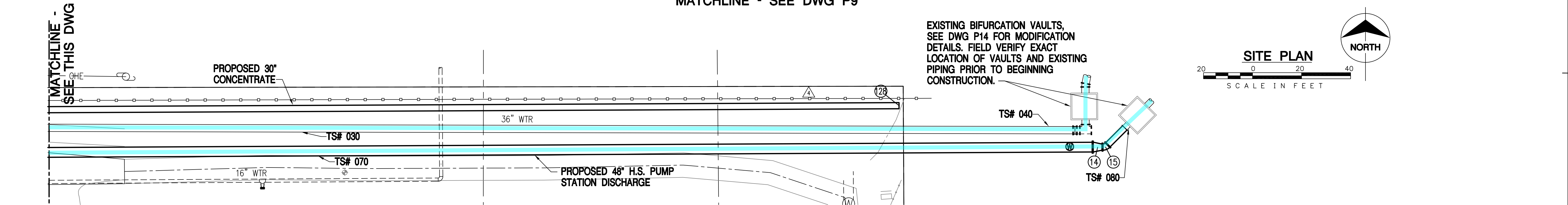
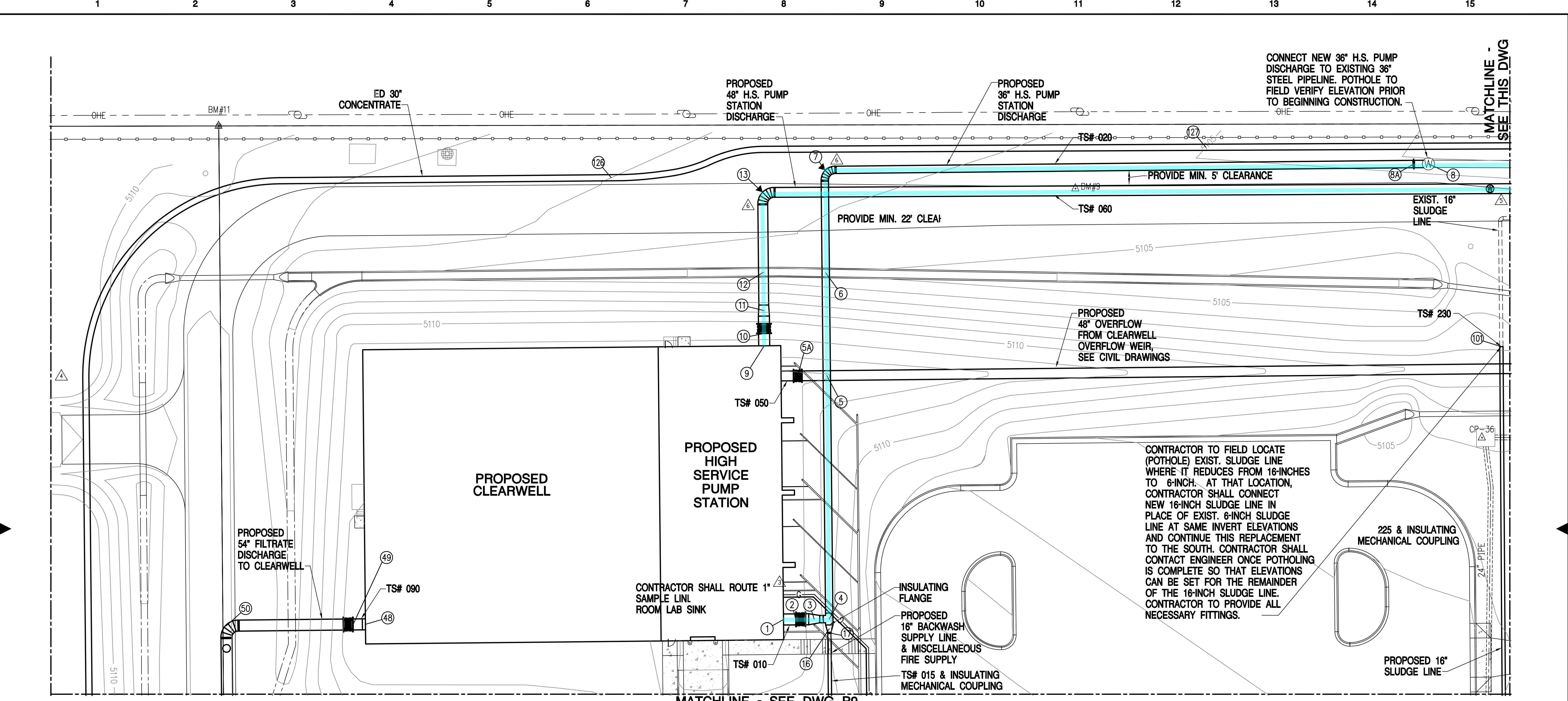
project 30735 contract

drawing **P56** - rev. **4**


sheet of sheets

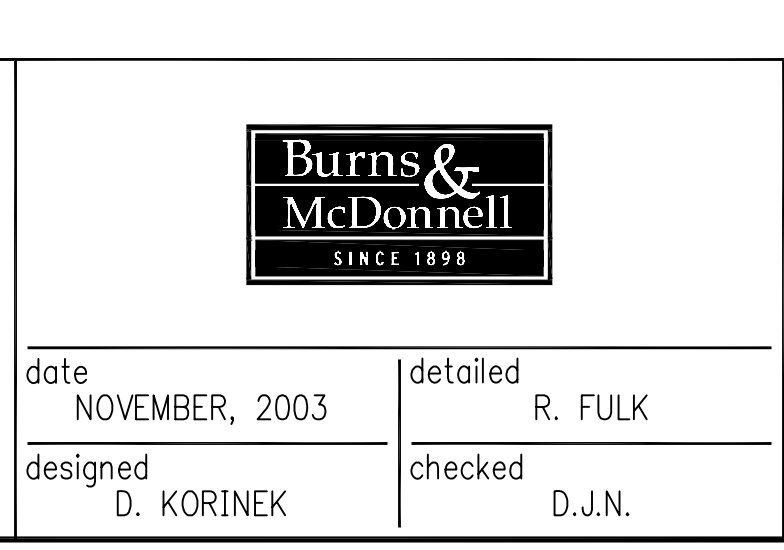
file THORP056.dwg 02-24-2005 08:41 JCW

R. FULK J:\THORPRO\30735\CADD\PROCESS\AS-BUILTS\THROP008.DWG MAR 22, 2006  
 COPYRIGHT © 2004 BURNS AND McDONNELL ENGINEERS, INC.



no.	date	by	revision
A	02/10/04	P.D.F.	GMP BASE BID
0	04/16/04	P.D.F.	ISSUE FOR CONSTRUCTION
1	9/10/04	M.A.L.	REVISED GMP BASE BID PHASE II
2	10/22/04	M.A.L.	ISSUE FOR CONSTRUCTION - PHASE II
3	11/23/04	M.A.L.	REVISED PER RFI 273
4	12/22/04	M.A.L.	REVISED PER RFI 280
5	11/11/04	M.A.L.	REVISED PER RFI 249
6	2/9/05	M.A.L.	REVISED PER RFI 382
7	12/7/05	M.A.L.	CONFORMING TO CONSTR. RECORDS

	
date NOVEMBER, 2003	detailed R. FULK
designed D. KORINEK	checked D.J.N.



**WES BROWN WATER TREATMENT PLANT EXPANSION**

YARD PIPING PLAN  
SHEET 2

project 30735	contract
drawing <b>P8</b>	rev. <b>7</b>
sheet of	sheets

file:THROP008\_ph2.dwg 12-22-2004 11:29 RWF