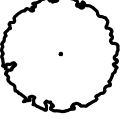



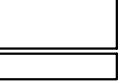
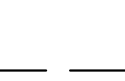






PLANT SCHEDULE

DECIDUOUS TREES	CODE	QTY	BOTANICAL NAME	COMMON NAME	SIZE	CONTAINER
	ULMO	3	ULMUS X 'MORTON'	ACCOLADE ELM	2" CAL.	B&B

LEGEND

-  EXISTING EVERGREEN SHRUB TO REMAIN
-  PROPOSED DECIDUOUS TREE
-  EXISTING IRRIGATED TURF TO REMAIN
-  PROPOSED PICNIC TABLE
-  EXPANSION JOINT
-  CONTROL JOINT
-  EXISTING LANDSCAPE EDGING TO BE REMOVED
-  EXISTING LANDSCAPE EDGING TO REMAIN
-  PROPOSED LANDSCAPE EDGING

STAKING: INSTALL 6" METAL T-POST STAKES OUTSIDE PLANTING PIT IN UNDISTURBED MULCHED SOIL. USE #12 GAUGE GALVANIZED WIRE.

ALLOW FOR SOME TRUNK MOVEMENT

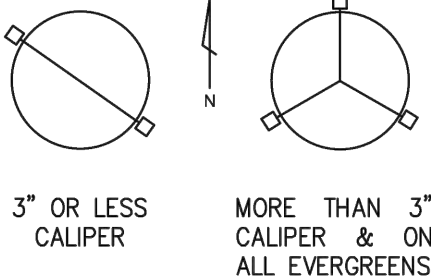
ATTACH TO 2" NYLON STRAPS THROUGH METAL GROMMETS, WITH 1/2" x 15" WHITE PVC SLEEVE ON EACH WIRE.

NYLON STRAPS SHALL BE LONG ENOUGH TO ACCOMMODATE 1-1/2" OF TRUNK GROWTH.

ADD PROTECTOR CAP TO TOP OF POST.

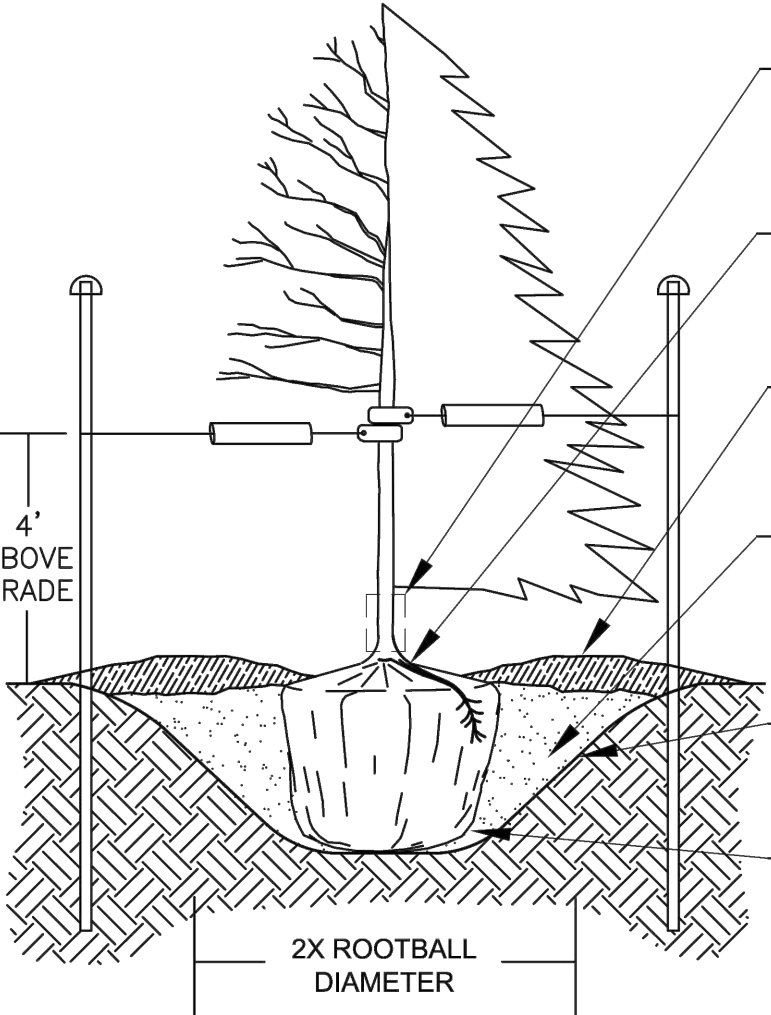
WRAP TREES TO FIRST BRANCH IF PLANTED IN THE FALL. DO NOT WRAP IF PLANTED IN SPRING.

TREE STAKING PLAN VIEW



3" OR LESS CALIPER

MORE THAN 3" CALIPER & ON ALL EVERGREENS



4" ABOVE GRADE

2X ROOTBALL DIAMETER

INSTALL TRUNK PROTECTOR, DESIGNED TO EXPAND WITH TRUNK GROWTH (DECIDUOUS ONLY).

PLANT TREE SUCH THAT FIRST ORDER MAJOR ROOT IS 1" TO 2" ABOVE GRADE AND TRUNK FLARE IS VISIBLE.

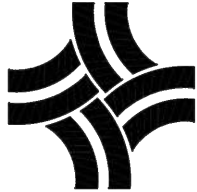
SPECIFIED MULCH (4" DEPTH X 6" DIAMETER) PULLED BACK 6" FROM BASE OF TRUNK.

BACKFILL PIT WITH MIXTURE OF 2/3 EXISTING SOIL AND 1/3 APPROVED AMENDMENT. WATER THOROUGHLY WHILE BACKFILLING. DO NOT COMPACT OR TAMP.

SIDE SLOPES OF PLANTING HOLE SHALL BE 1:1. ROUGHEN SIDES OF PLANTING PIT PRIOR TO SETTING.

PLACE ROOTBALL ON UNDISTURBED SOIL TO PREVENT SETTLEMENT. REMOVE ENTIRE WIRE BASKET, ALL ROPE, TWINE AND BURLAP FROM ROOTBALL AND TRUNK.

N.T.S.



CITY OF THORNTON, COLORADO  
STANDARDS & SPECIFICATIONS

DECIDUOUS AND EVERGREEN TREE  
PLANTING DETAIL

ISSUED: MARCH 1996  
REVISED: APRIL 2010  
DRAWING NO. 800-1A

SITE AND LANDSCAPE PLAN

SEAL:

5690 WEBSTER STREET  
ARVADA, CO 80002  
303.423.6036  
rickengineering.com

**RICK**  
ENGINEERING COMPANY

San Diego - Riverside - San Luis Obispo - Sacramento - Orange - Tucson - Phoenix - Las Vegas - Denver

PROJECT NO: 2209-B DRAWN/DESIGNED BY: JG / KN  
DATE: 8/03/2022 CHECKED BY: KN

CONSTRUCTION DOCUMENTS PREPARED FOR:

TUCK DITCH PARK STRUCTURE

FINAL PLANS  
CITY OF THORNTON

SITE PLAN

811  
Know what's below.  
Call before you dig.

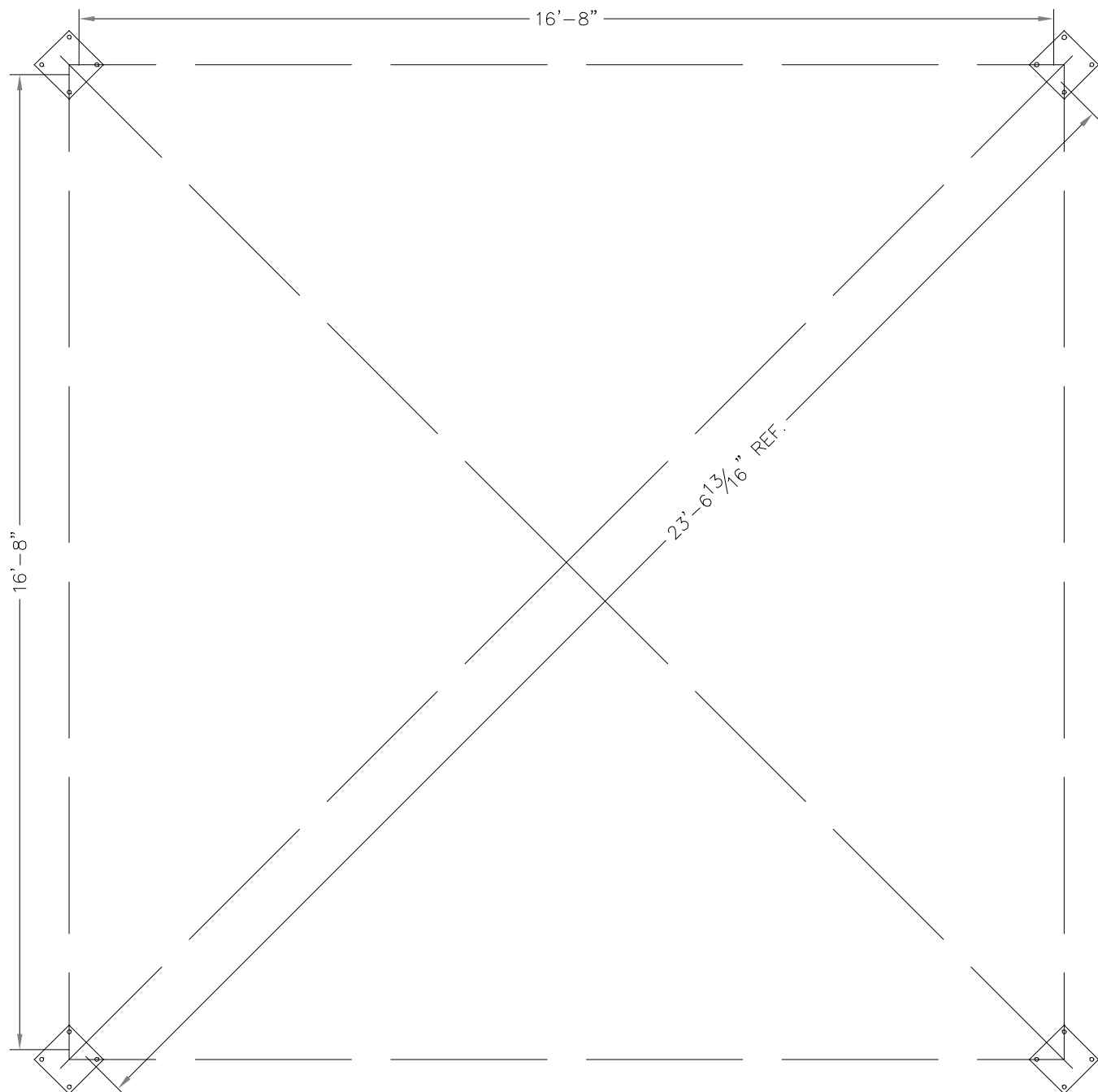
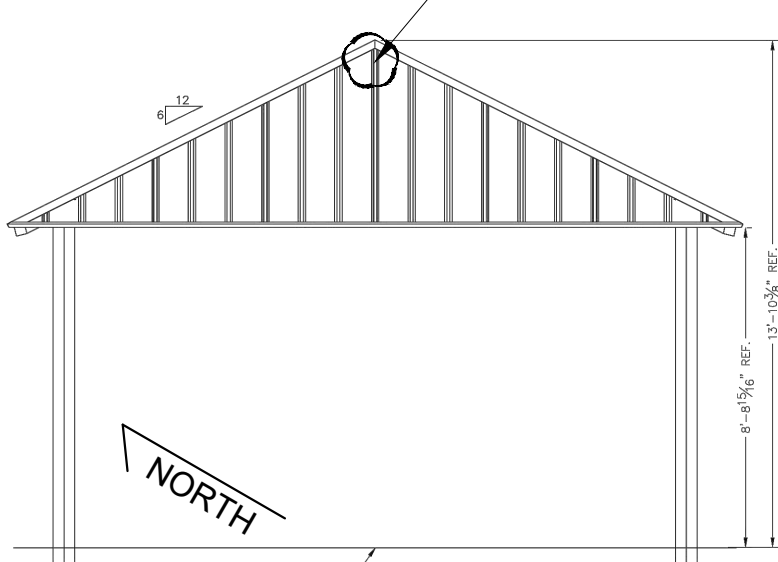
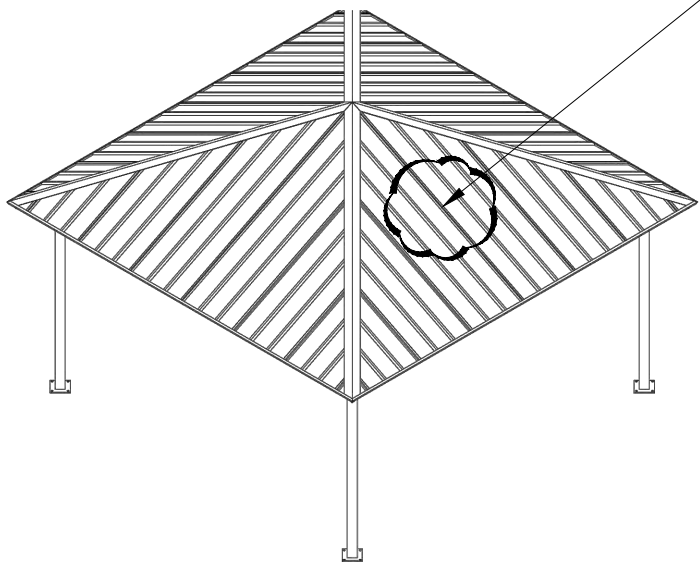
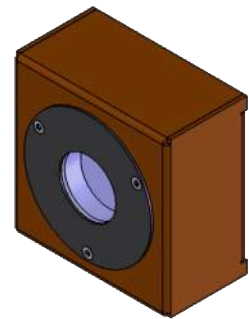
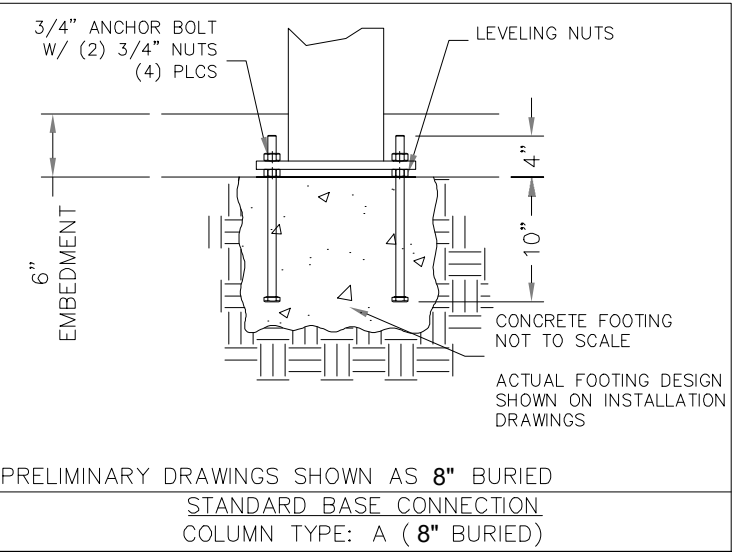
DRAWING NO. SP-01  
SHEET NO. 2 OF 8



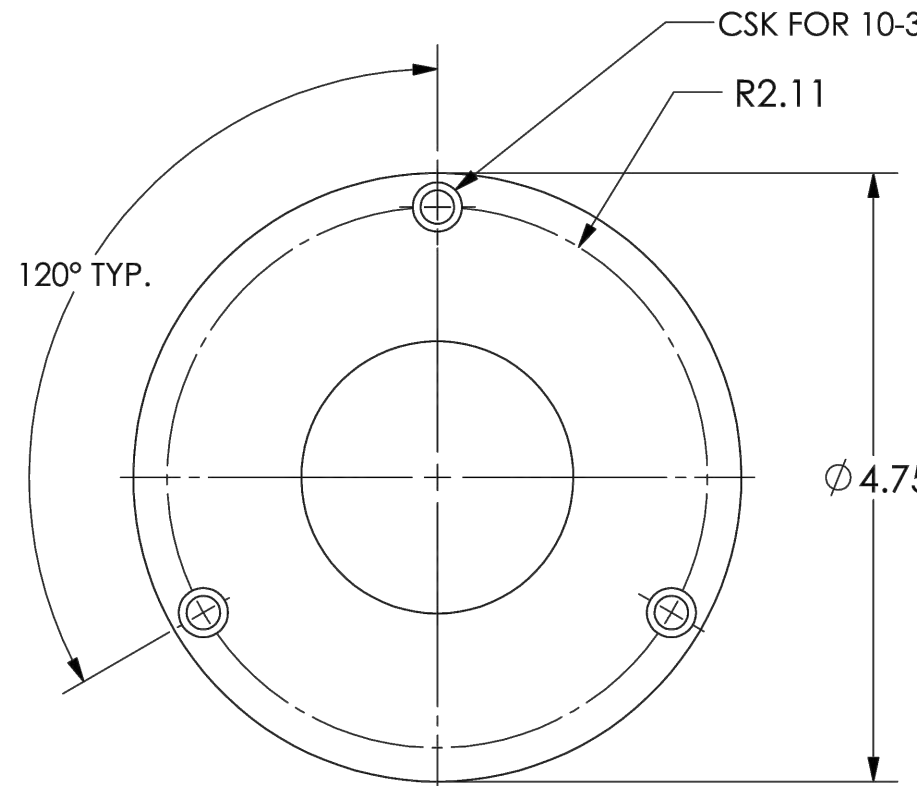
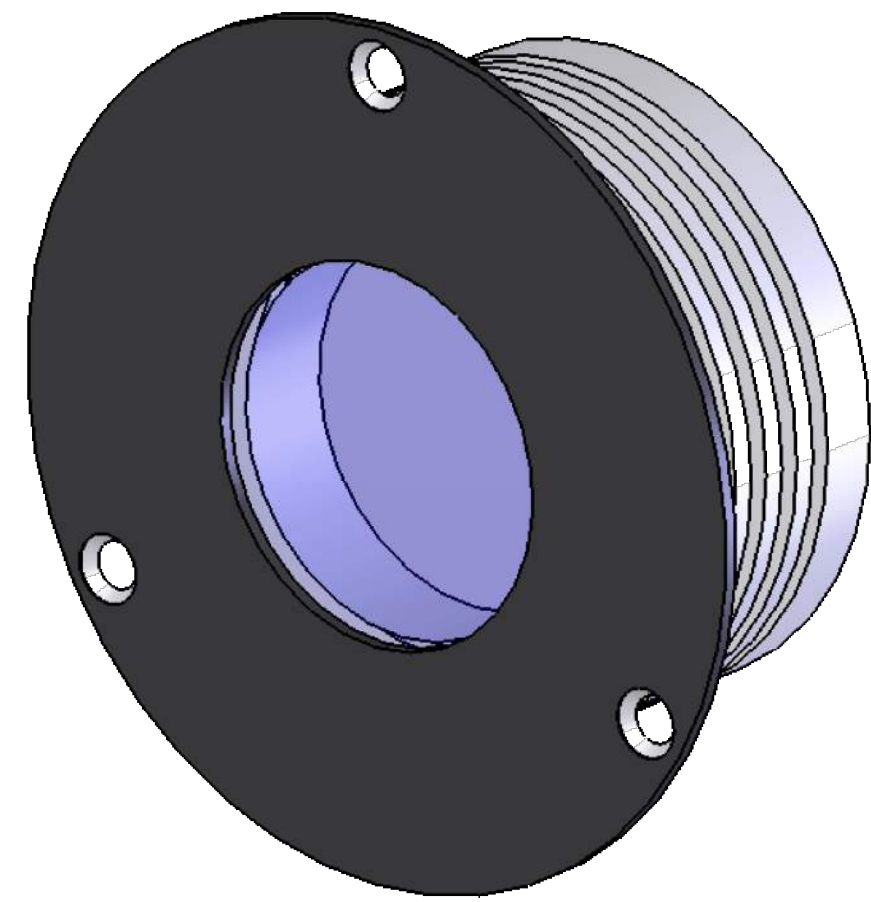
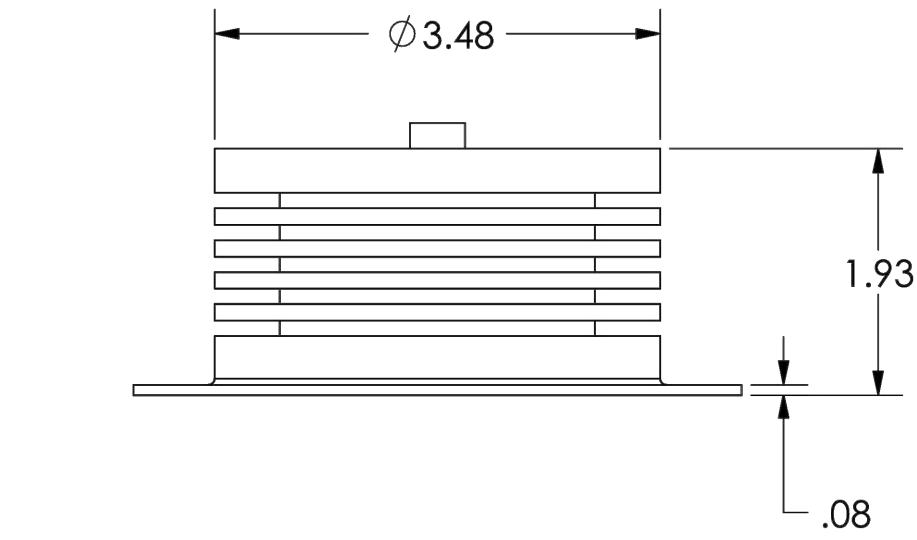
**NOTE:** FINAL DETAILS TO BE PROVIDED BY STRUCTURAL ENGINEER.

**NOTE:** SHELTER AND SOLAR LIGHTING PACKAGE TO BE INSTALLED BY SHADE STRUCTURE VENDOR CONTRACTOR

**STRUCTURE MANUFACTURER: ICON**  
MODEL: SQ20-9M-P6  
ROOF: 24 GAUGE STEEL  
POST COLOR: BONE WHITE  
ROOF PANELS: PATINA GREEN

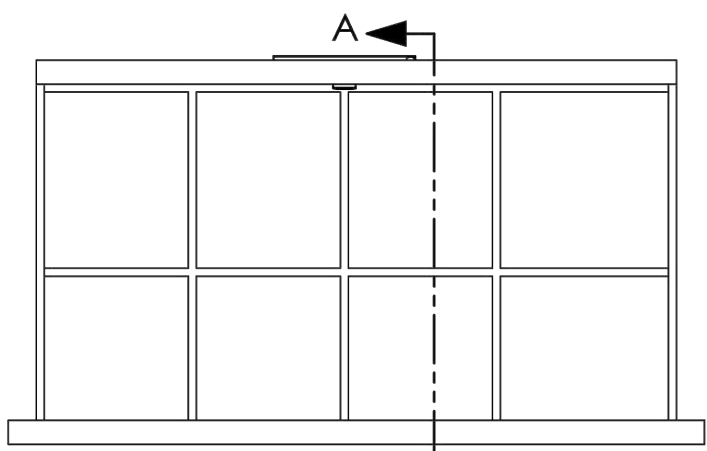


**A** SHADE SHELTER  
NOT TO SCALE

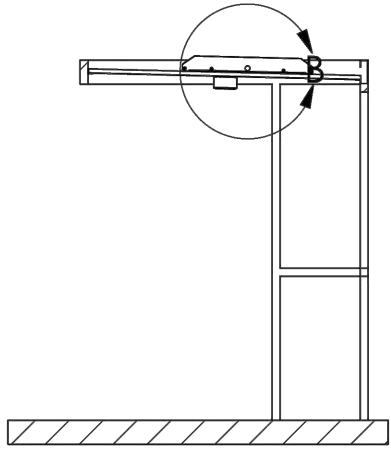


**SPECIFICATIONS:**  
**HOUSING MATERIAL:** ALUMINUM  
**ENCLOSURE FINISHING:** BLACK / CLEAR ANNODIZING  
**LENS COVER:** POLYCARBONATE  
**IP RATING:** IP54  
**VMAX:** 28 VDC  
**TYPICAL INPUT VOLTAGE:** 12-24VDC  
**MAX POWER (W):** 8W MAX  
**POWER:** 7.9 W @ 12 VDC, 8.4 W @ 24 VDC  
**TEMPERATURERANGE:** -40 TO +85 °C [-40 TO 185 °F]

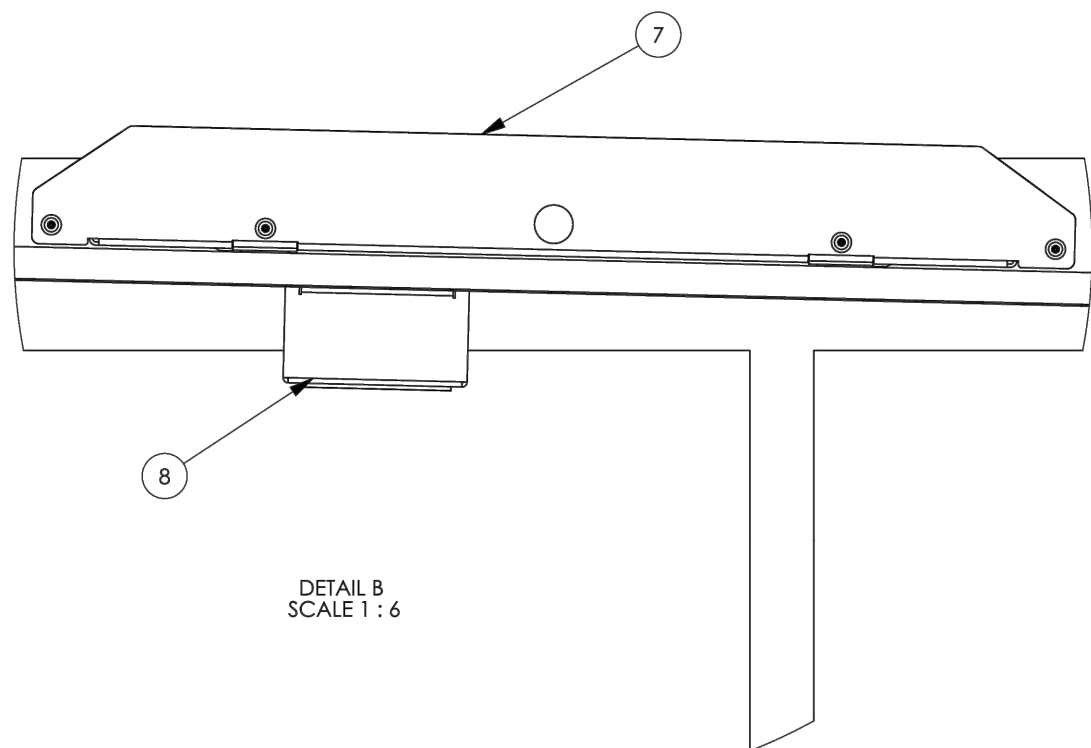
**B** LED LIGHT  
NOT TO SCALE



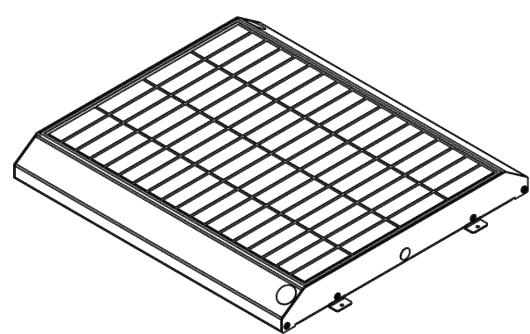
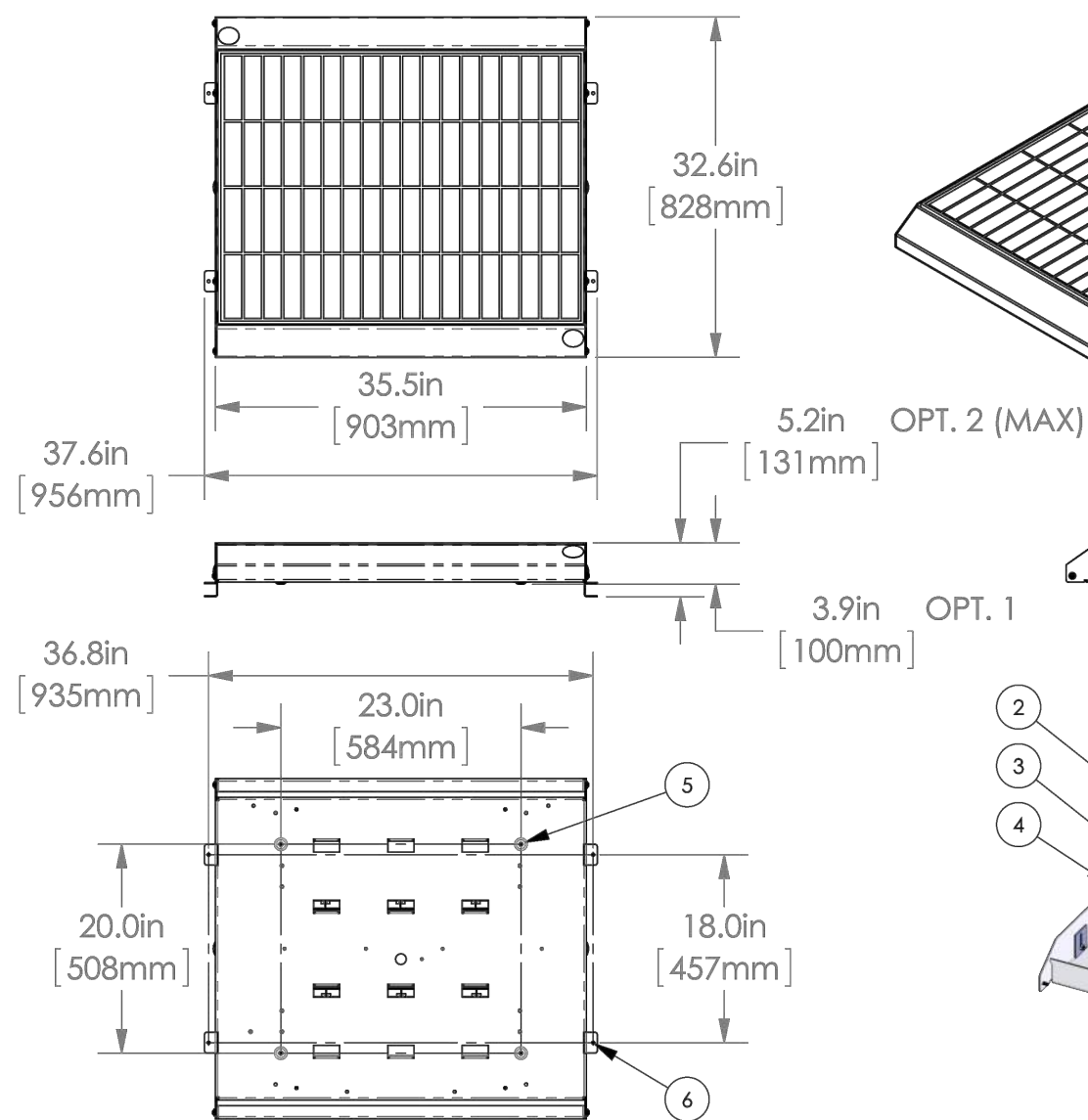
TYPICAL INSTALLATION



SECTION A-A  
SCALE 1 : 48

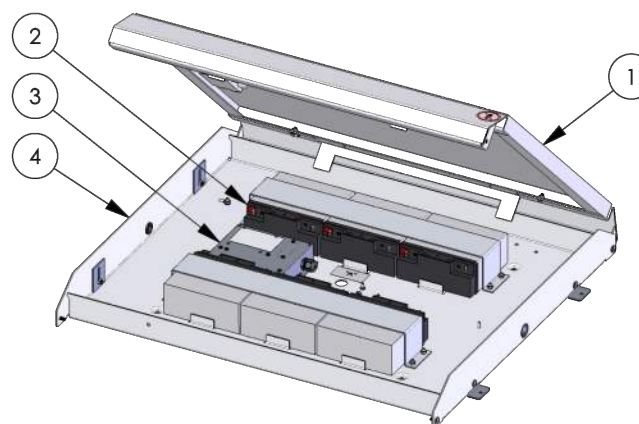


DETAIL B  
SCALE 1 : 6



OPT. 2 (MAX)

OPT. 1



NOTES:  
① SOLAR ARRAY  
② BATTERY BANK  
③ USC ECM  
④ CHASSIS - 10 GA ALUMINUM  
⑤ MOUNTING OPTION 1 - FIXED HEIGHT .19" SURFACE TO RMS UNDERSIDE  
⑥ CLEARANCE 4X CLEARANCE HOLES FOR 1/4" HARDWARE  
⑦ MOUNTING OPTION 2 - ADJUSTABLE HEIGHT .19" - 1.40" SURFACE TO RMS  
⑧ UNDERSIDE CLEARANCE 4X CLEARANCE HOLES FOR 1/4" HARDWARE  
⑨ RMS-100 MOUNTED DIRECTLY TOROOF STRUCTURE - OPTION 1 SHOWN (USE  
OPTION 2 WITH STANDING SEAM ROOF)  
⑩ REMOTELY MOUNTED LED LUMINAIRE - 8W ROUND IN VANDAL RESISTANT  
HOUSING SHOWN

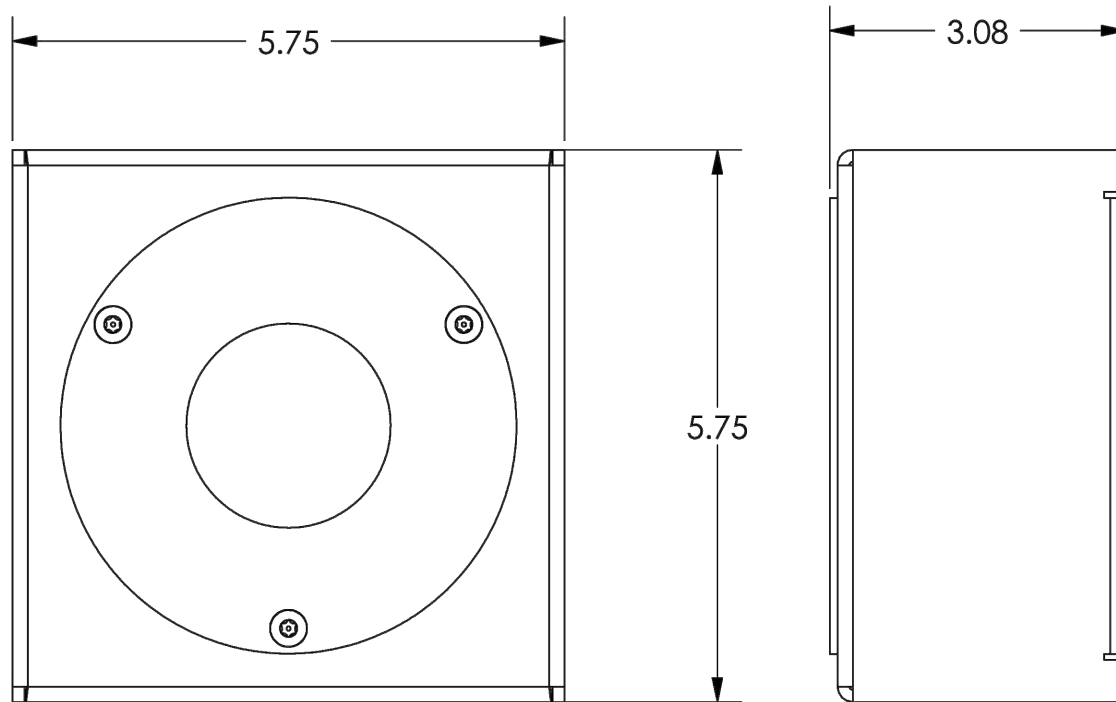
\*\*\*OPERATING PROFILE DEPENDENT ON GEOGRAPHIC LOCATION. PLEASE  
CONTACT URBAN SOLAR FOR ASSISTANCE WITH LIGHTING DESIGN.\*\*\*



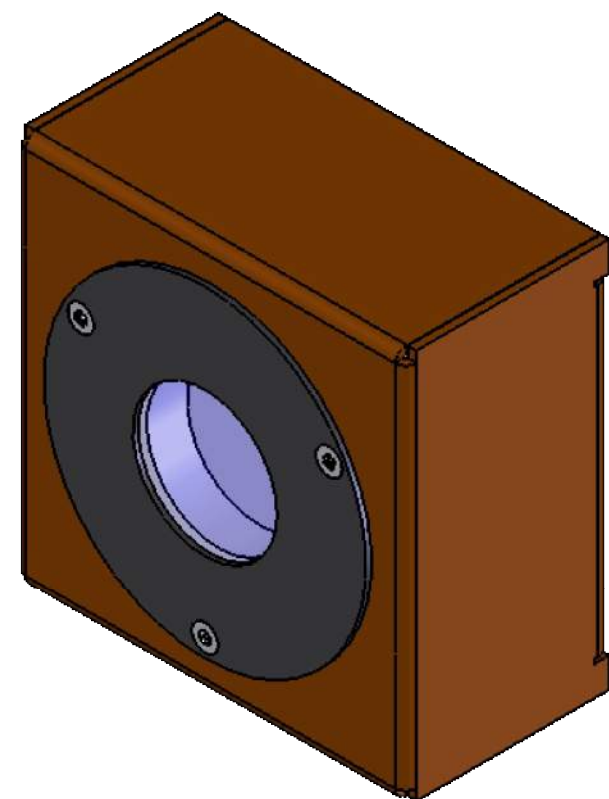
**SPECIFICATIONS: MODEL #RMS-100**  
MANUFACTURER: URBAN SOLAR CORP.  
SOLAR ARRAY (W): 100  
NOM. SYSTEM VOLTAGE (VDC): 12  
MAX. BATTERY BANK (Ah): 108  
BATTERY TYPE: SEALED LEAD ACID (SLA)  
CONTROLLER: USC ECM C/W REAL TIME CLOCK  
CHASSIS MATERIAL: ALUMINUM  
CHASSIS COATING: POWDER COAT - POLYESTER  
SYSTEM WEIGHT (lbs): 99 (4 BATT), 112 (5 BATT), 125 (6 BATT)  
FLAT OR RADIUS: FLAT

**SPECIFICATIONS: MODEL #RMS100 USC LED ROUND, 8W**  
MANUFACTURER: URBAN SOLAR CORP.

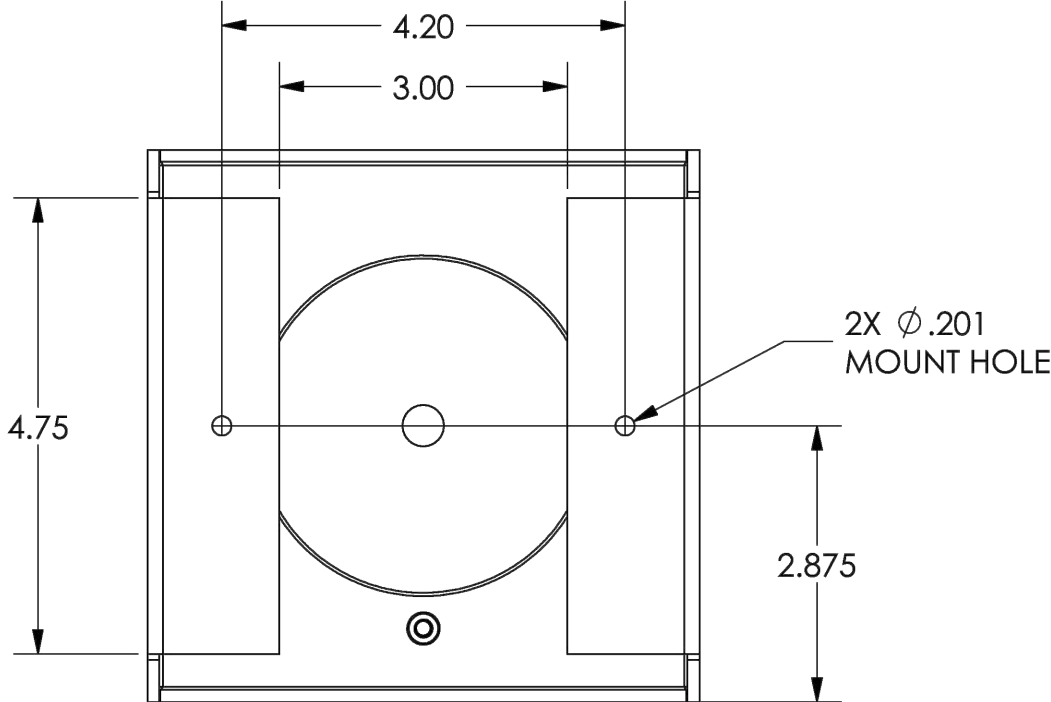
**SPECIFICATIONS:**  
**MOUNT MATERIAL:** ALUMINUM, 5052-H32, 1/8"  
**MOUNT FINISH:** POWDER COAT, POLYESTER



FLUSH MOUNT



\*MOUNT COLOR IS MATCHED TO APPLICATION. BROWN  
SHOWN FOR ILLUSTRATION PURPOSES ONLY.



**D** LED LIGHT ENCLOSURE  
NOT TO SCALE

**C** SOLAR LIGHTING POWER MODULE  
NOT TO SCALE

SEAL:

5690 WEBSTER STREET  
ARVADA, CO 80002  
303.423.6036  
rickengineering.com

**RICK**  
ENGINEERING COMPANY

San Diego - Riverside - San Luis Obispo - Sacramento - Orange - Tucson - Phoenix - Las Vegas - Denver

PROJECT NO: 2209-B DRAWN/DESIGNED BY: JG / KN  
DATE: 8/03/2022 CHECKED BY: KN

CONSTRUCTION DOCUMENTS PREPARED FOR:

TUCK DITCH PARK STRUCTURE

FINAL PLANS  
CITY OF THORNTON

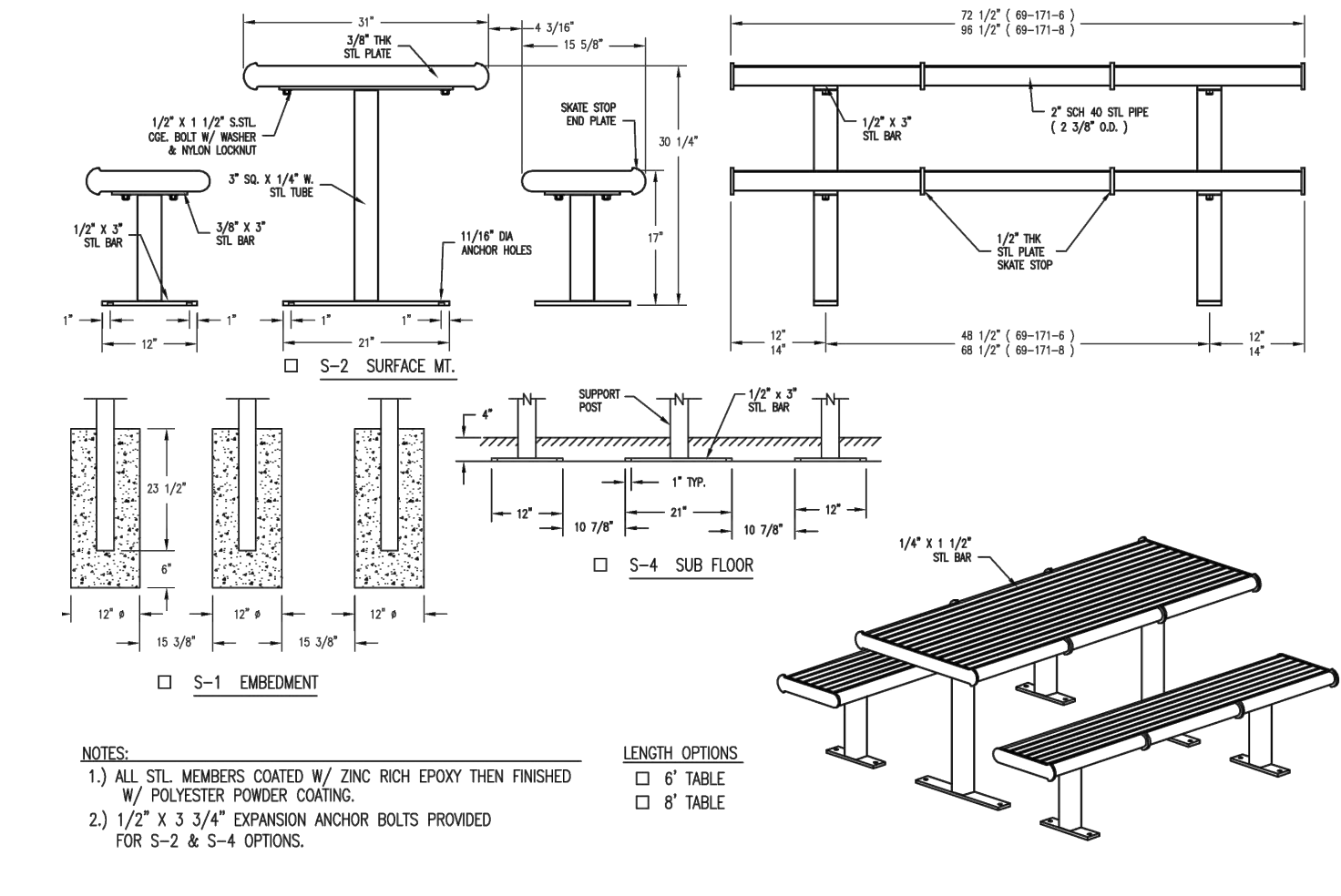
HARDSCAPE DETAILS



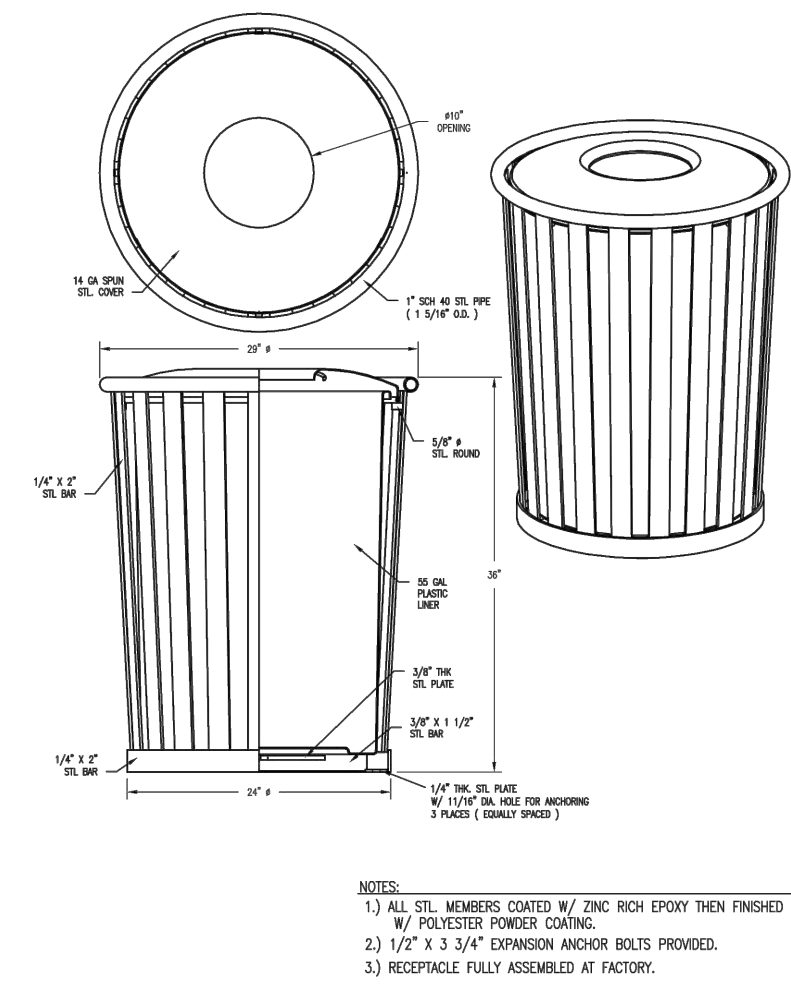
Know what's below.  
Call before you dig.

DRAWING NO.  
**HD-01**  
SHEET NO. 3 OF 8

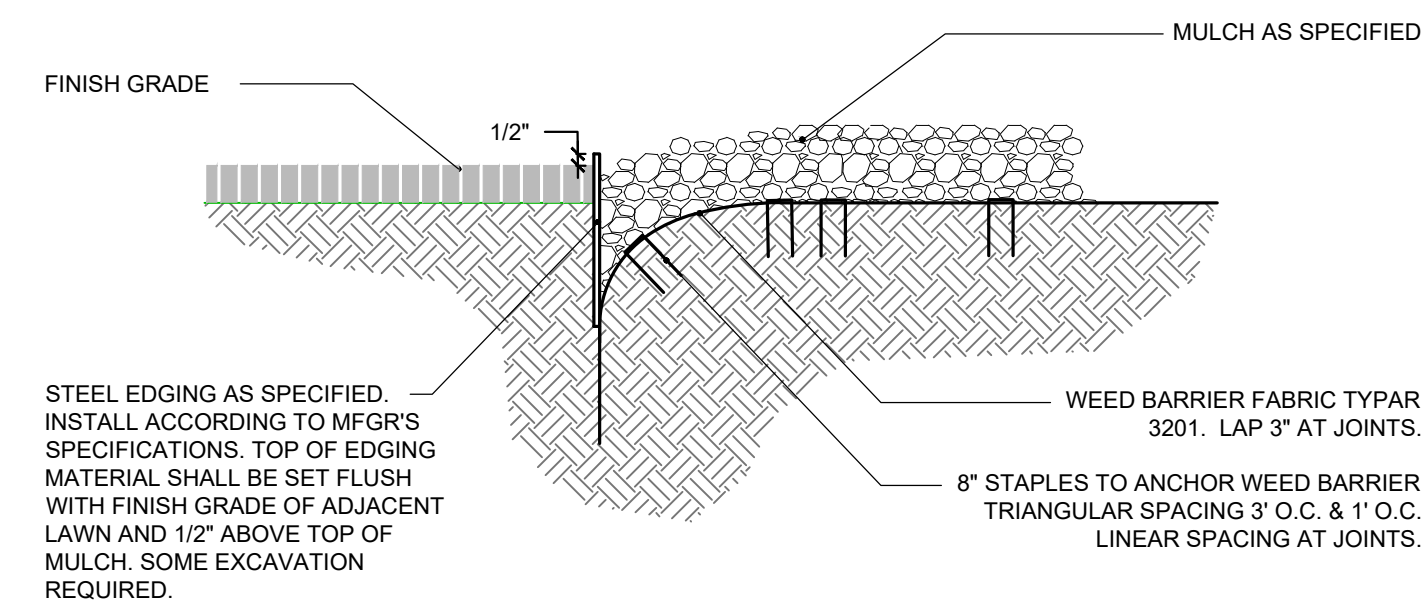




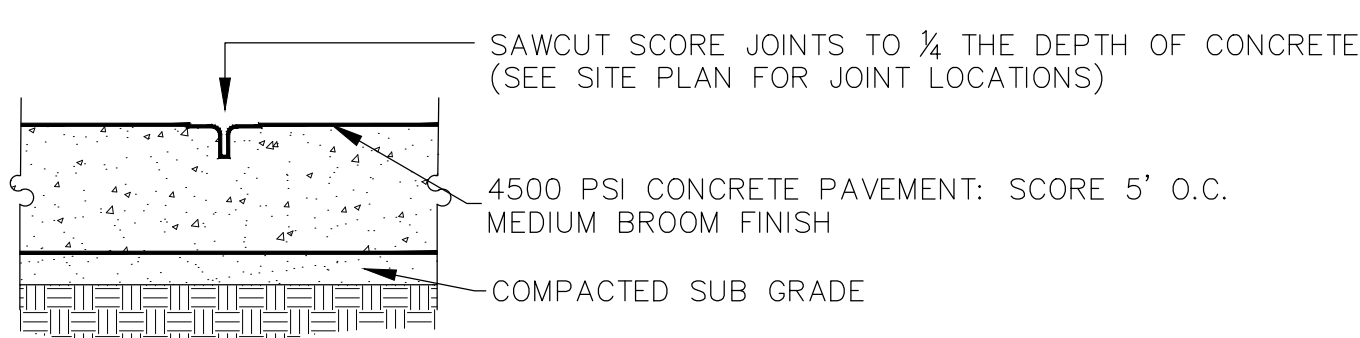
**A** **TABLE**  
SCALE: 1" = 1'-0"



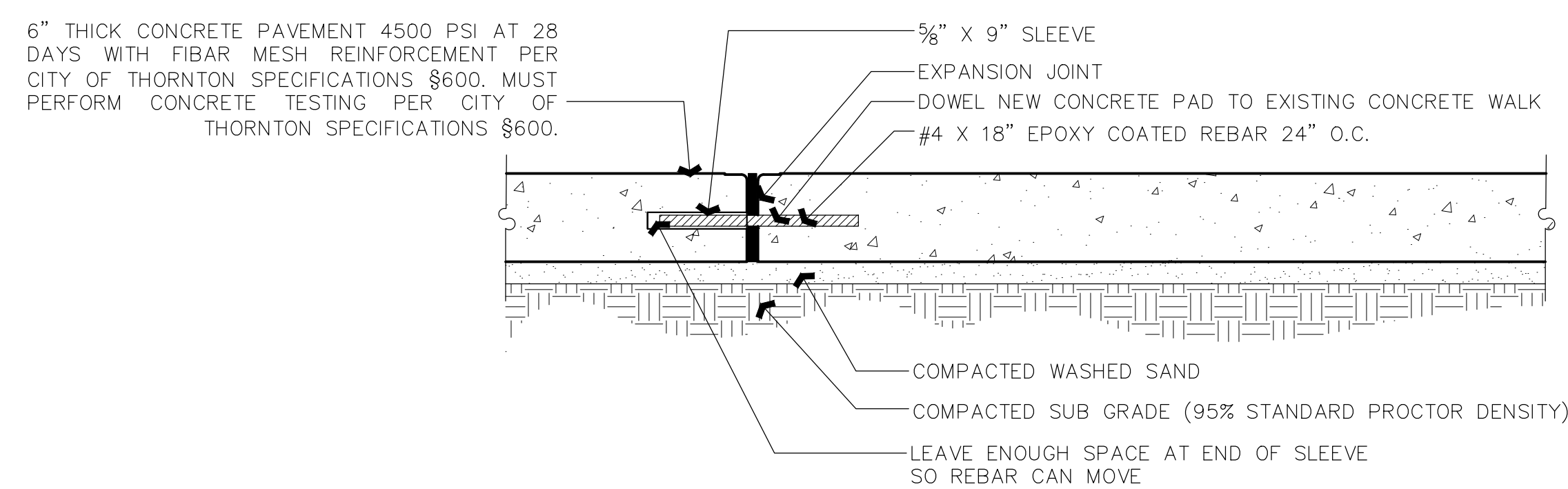
**B** **TRASH RECEPTACLE**  
SCALE: 1" = 1'-0"



**C** **EDGING, MULCH, AND FABRIC INSTALL**  
N.T.S.

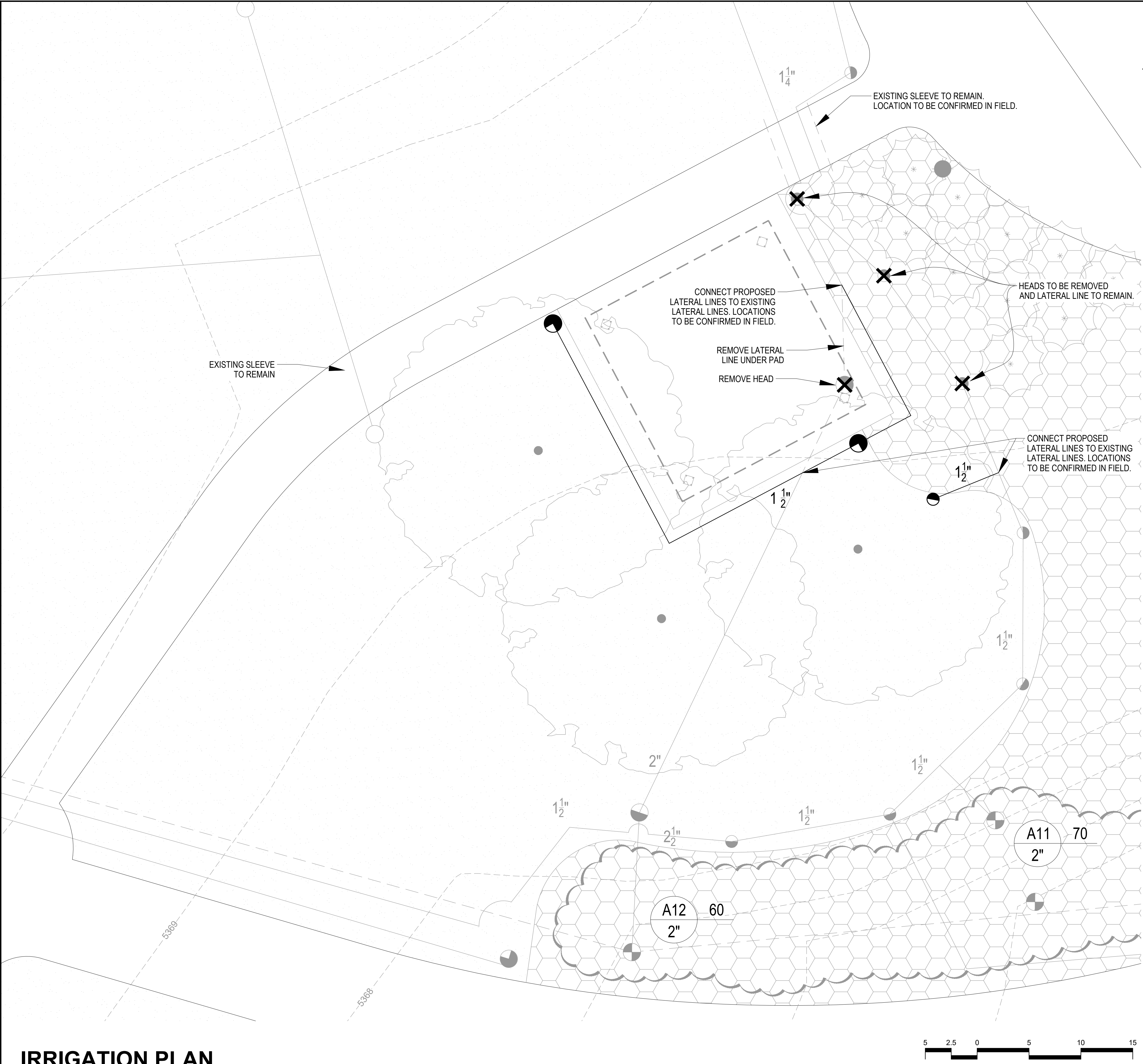


**D** **CONTROL JOINT DETAIL**  
N.T.S.



**E** **CONCRETE PAD WITH DOWELING**  
N.T.S.

CONSTRUCTION DOCUMENTS PREPARED FOR:		5690 WEBSTER STREET ARVADA, CO 80002 303.423.6036 rickengineering.com	
TUCK DITCH PARK STRUCTURE		RICK ENGINEERING COMPANY	
FINAL PLANS CITY OF THORNTON		San Diego - Riverside - San Luis Obispo - Sacramento - Orange - Tucson - Phoenix - Las Vegas - Denver	
HARDSCAPE DETAILS		PROJECT NO: 2209-B DRAWN/DESIGNED BY: JG / KN DATE: 8/03/2022 CHECKED BY: KN	
DRAWING NO.		HD-02	
SHEET NO.		4 OF 8	



LEGEND

SYMBOL	MODEL	DESCRIPTION	DETAIL
✕	EXISTING TO REMOVE	TO BE REMOVED & LATERAL LINE PATCHED	
◐ ◑	EXISTING TO REMAIN 1804-SAM-PRS W/15 SER. NOZZLE	RAINBIRD POP-UP SPRAY HEAD	①
◑	EXISTING TO REMAIN HUNTER I-25-ADS-8	HUNTER ROTOR	②
◐ ◑	EXISTING TO REMAIN HUNTER I-25-ADS-10	HUNTER ROTOR	②
◐ ◑	EXISTING, RAINBIRD EPB-CP-PRS-B SERIES	REMOTE CONTROL VALVE	
◐	PROPOSED 1804-SAM-PRS W/15 SER. NOZZLE	RAINBIRD POP-UP SPRAY HEAD	
◑	PROPOSED 1804-SAM-PRS W/15 SER. NOZZLE	HUNTER POP-UP ROTOR	
---	EXISTING TO REMAIN CL. 200 B.E. (3")	PVC MAINLINE - 3" UNLESS OTHERWISE NOTED	
---	EXISTING CL. 200 B.E.	PVC LATERALS - 1" UNLESS OTHERWISE NOTED	
---	PROPOSED CL. 200 B.E.	PVC LATERALS - 1" UNLESS OTHERWISE NOTED	
---	EXISTING CL. 200	PVC SLEEVE	
GPM		CONTROLLER NUMBER	
		VALVE SIZE	

NOTES:

- ADJUST EXISTING IRRIGATION TO ACCOMODATE PROPOSED SHADE STRUCTURE AND ASSOCIATED CONCRETE PAD WITH MINIMAL DISTURBANCES TO EXISTING LANDSCAPE AND PAVING.
- ALL BASE INFORMATION HAS BEEN TAKEN FROM THE EXISTING APPROVED AS-BUILT DRAWINGS PREPARED BY VALERIAN LLC AND IRRIGATION DESIGN AND CONSULTING, INC.
- IRRIGATION SYSTEM IS DESIGN FOR A STATIC WATER PRESSURE OF 60 PSI. CONTRACTOR IS TO VERIFY PRESSURE PRIOR TO INSTALLATION OF IRRIGATION SYSTEM AND NOTIFY CITY OF THORNTON REPRESENTATIVE WITH VERIFICATION FIGURES. FAILURE TO NOTIFY THE CITY OF THORNTON REPRESENTATIVE WILL RESULT IN CONTRACTOR TAKING RESPONSIBILITY FOR ANY ALTERATIONS AT THE CONTRACTOR'S OWN COST.
- CONTRACTOR TO COORDINATE INSTALLATION OF SLEEVING WITH INSTALLATION OF PAVING.
- KEEP DISTURBANCES TO EXISTING TURF TO A MINIMUM WHILE ADJUSTING EXISTING IRRIGATION SYSTEM.
- CITY OF THORNTON STANDARDS AND SPECIFICATIONS SHALL SUPERCEDE CONSTRUCTION DOCUMENT SPECIFICATIONS.

IRRIGATION PLAN

SEAL:

5690 WEBSTER STREET  
ARVADA, CO 80002  
303.423.6036  
rickengineering.com

**RICK**  
ENGINEERING COMPANY  
San Diego - Riverside - San Luis Obispo - Sacramento - Orange - Tucson - Phoenix - Las Vegas - Denver

PROJECT NO: 2209-B  
DATE: 8/03/2022

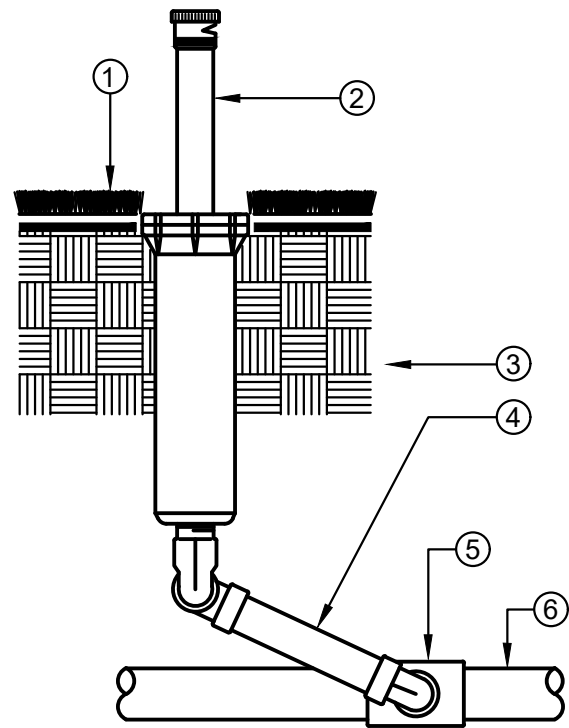
DRAWN/DESIGNED BY: JG / KN  
CHECKED BY: KN

CONSTRUCTION DOCUMENTS PREPARED FOR:  
**TUCK DITCH PARK STRUCTURE**  
FINAL PLANS  
CITY OF THORNTON

**811**  
Know what's below.  
Call before you dig.

DRAWING NO.  
**IR-01**  
SHEET NO. 5 OF 8

IRRIGATION PLAN



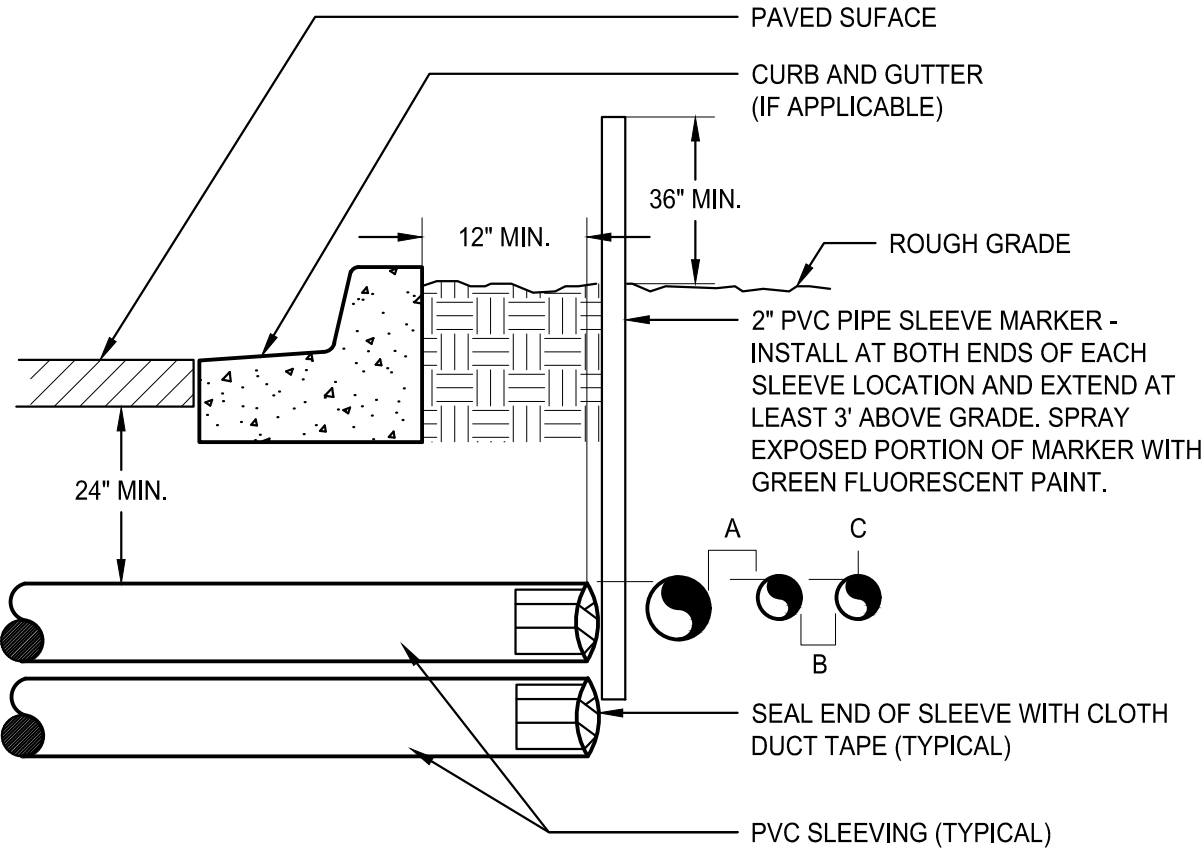
- 1 INSTALL SPRINKLER HEAD FLUSH WITH FINISH GRADE IN TURF AREAS
- 2 POP-UP SPRINKLER HEAD, SPRAY OR ROTOR SEE LEGEND FOR SPECIFICATION
- 3 UNDISTURBED SOIL
- 4 TRIPLE SWING JOINT ASSEMBLY
- 5 SCH 40 PVC SxSxT TEE FITTING LATERAL x SPRINKLER INLET SIZE
- 6 LATERAL LINE, PER PLAN

NOTE:  
INSTALL SPRINKLER HEADS 24" FROM PAVING EDGE. INSTALL SPRINKLER HEADS PLUMB. ADJUST SPRAYS OR NOZZLE STREAM TO COVER LANDSCAPE AREA WITHOUT OVERSPRAY ONTO PAVING, FENCES, WALLS OR BUILDINGS. ALL THREADED CONNECTIONS TO HAVE TEFLON TAPE OR PASTE.

1

POP-UP SPRINKLER

NTS

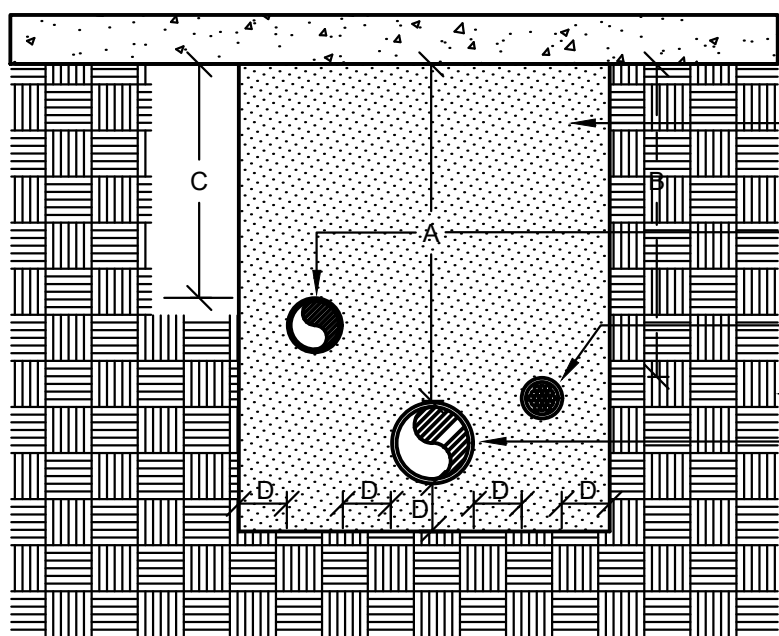


- NOTE:
- ALL SLEEVE MATERIAL PER IRRIGATION SCHEDULE, SIZE AS NOTED ON PLAN.
  - INSTALL SLEEVES IN SIDE-BY-SIDE CONFIGURATION WHERE MULTIPLE SLEEVES ARE TO BE INSTALLED. SPACE SLEEVES 4" TO 6" APART. DO NOT STACK SLEEVES VERTICALLY.
  - CONTRACTOR TO COORDINATE WITH FLATWORK INSTALLER TO BRAND A "V" IN SIDEWALK OR CURB AT BOTH ENDS OF SLEEVE CROSSING.

2

IRRIGATION SLEEVING

NTS



DIMENSION- PEDESTRIAN	A	B	C	D
2" TO 12" SIZE	30"	24"	18"	4"
DIMENSION- VEHICLE	A	B	C	D
2" TO 12" SIZE	36"	30"	24"	4"

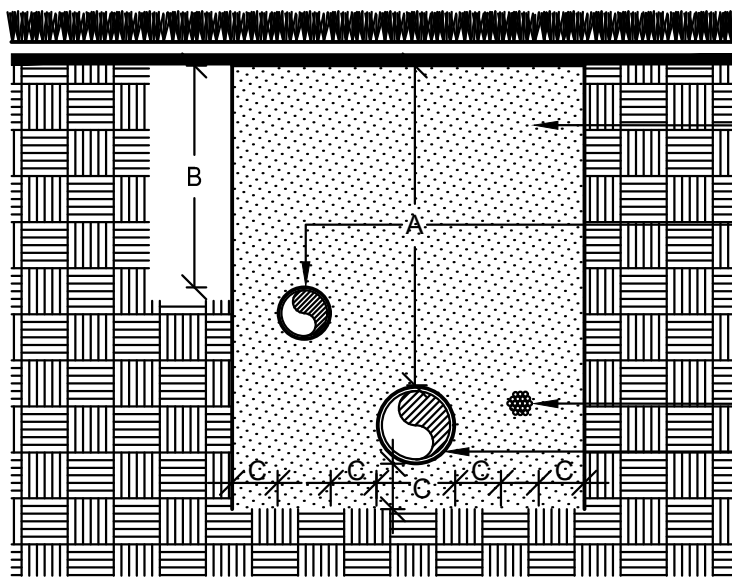
- 1 PAVING
- 2 SAND BACKFILL COMPACTED TO THE DENSITY OF EXISTING SOIL
- 3 LATERAL LINE SEE LEGEND FOR SPECS
- 4 CONTROL WIRE SEE LEGEND FOR SPECS
- 5 UNDISTURBED SOIL
- 6 MAINLINE SLEEVE, SEE LEGEND FOR SPECS

PVC SLEEVES TO BE TWICE THE DIAMETER OF THE PIPE OR WIRE BUNDLE CARRIED.

3

SLEEVE INSTALLATION

NTS



DIMENSION	A	B	C
1/2" TO 2-1/2" IN SIZE	24"	18"	4"
3" IN SIZE	24"		4"
4" AND LARGER	36"		4"

- 1 FINISH GRADE
- 2 CLEAN COMPACTED BACKFILL
- 3 LATERAL LINES, SEE SPECS.
- 4 UNDISTURBED SOIL
- 5 CONTROL WIRES, SEE SPECS.
- 6 PRESSURE MAINLINE, SEE SPECIFICATIONS

4

PIPE INSTALLATION

NTS

CONSTRUCTION DOCUMENTS PREPARED FOR:

TUCK DITCH PARK STRUCTURE

FINAL PLANS

CITY OF THORNTON

IRRIGATION DETAILS



DRAWING NO.

IR-02

SHEET NO. 6 OF 8

SEAL:

5690 WEBSTER STREET  
ARVADA, CO 80002  
303.423.6036

**RICK**  
ENGINEERING COMPANY  
San Diego - Riverside - San Luis Obispo - Sacramento - Orange - Tucson - Phoenix - Las Vegas - Denver

rickengineering.com

PROJECT NO: 2209-B DRAWN/DESIGNED BY: JG / KN

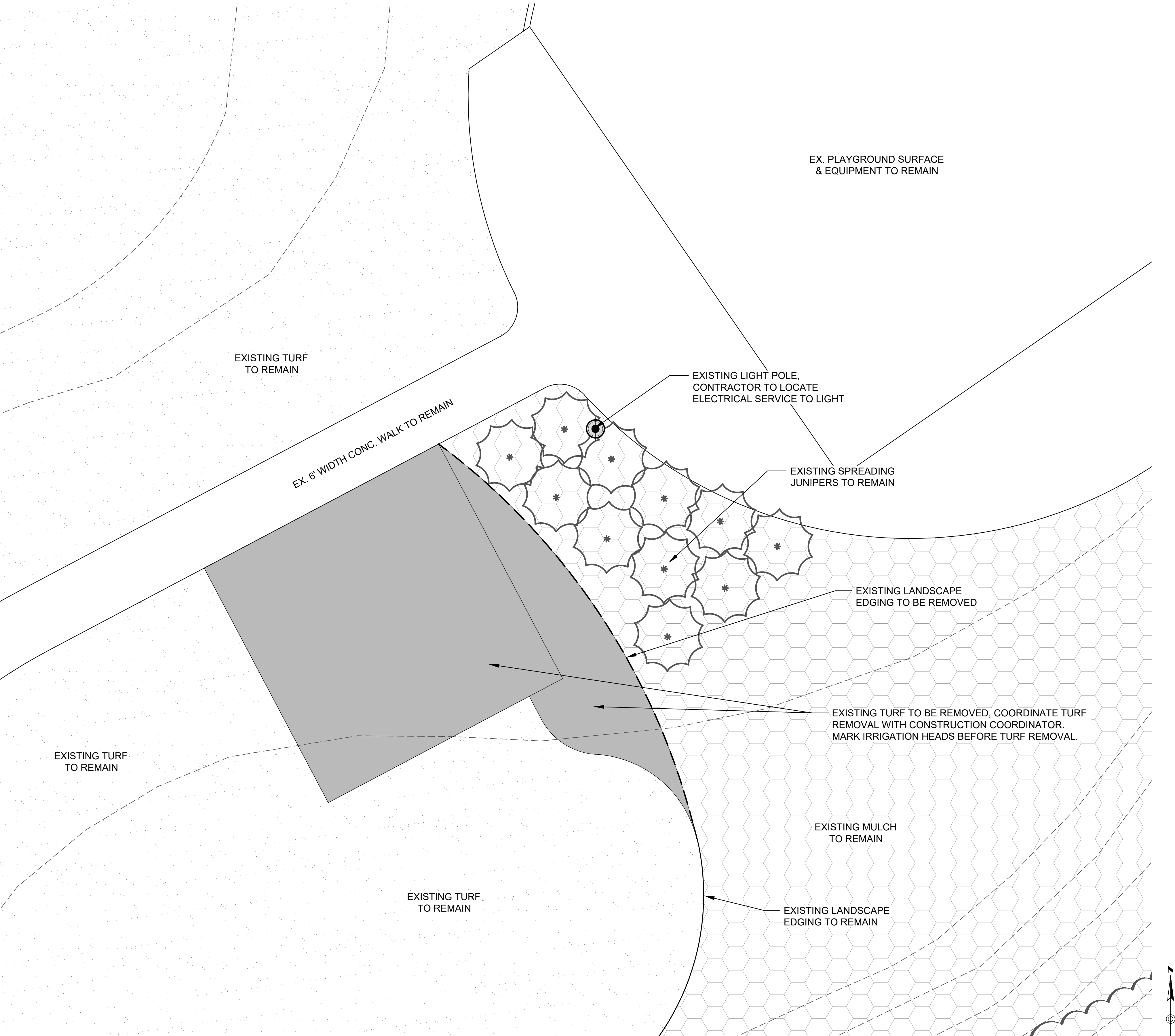
DATE: 8/03/2022 CHECKED BY: KN

REVISION

DATE

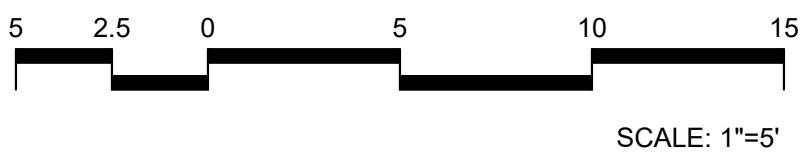
NO. BY






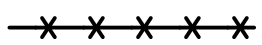

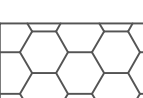
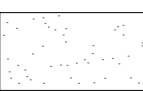
SITE FEATURES FOR DEMO:			
TURF	±900 SF		
LANDSCAPE EDGING	±44 LF		

DEMOLITION PLAN



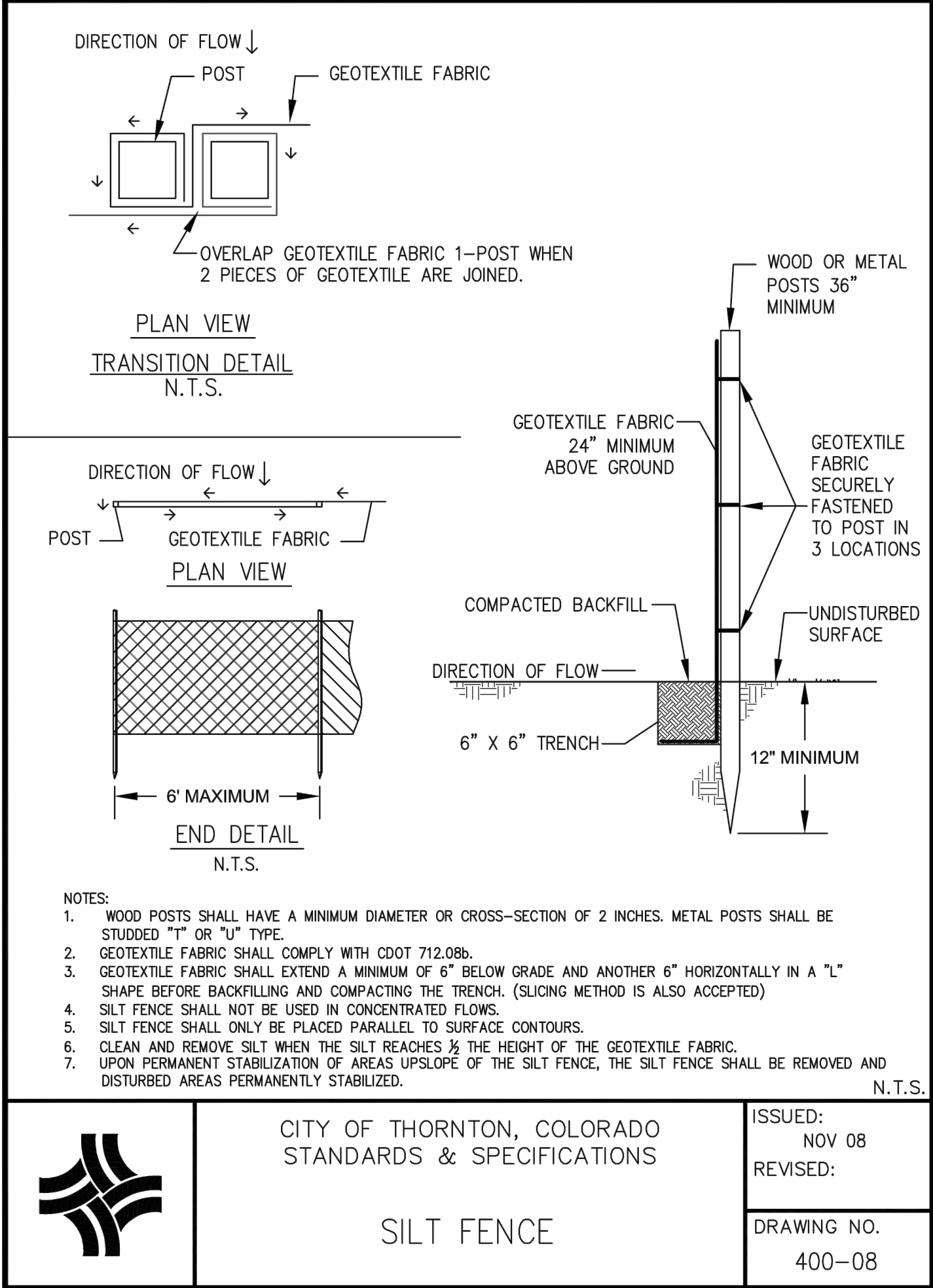
CONSTRUCTION DOCUMENTS PREPARED FOR:		5690 WEBSTER STREET ARVADA, CO 80002 303.423.6036 rickengineering.com		SEAL:	
TUCK DITCH PARK STRUCTURE		RICK ENGINEERING COMPANY			
FINAL PLANS CITY OF THORNTON		San Diego - Riverside - San Luis Obispo - Sacramento - Orange - Tucson - Phoenix - Las Vegas - Denver			
DEMOLITION PLAN		PROJECT NO: 2209-B DATE: 8/03/2022		DRAWN/DESIGNED BY: JG / KN CHECKED BY: KN	
811 Know what's below. Call before you dig.		DRAWING NO. DP-01			
		SHEET NO. 7 OF 8			

LEGEND:

-  **CF** CONSTRUCTION FENCE
-  **SF** SILT FENCE
-  **SCL** SEDIMENT CONTROL LOG
-  EXISTING DIRT AND MULCH
-  EXISTING TURF AND NEW LIMITS

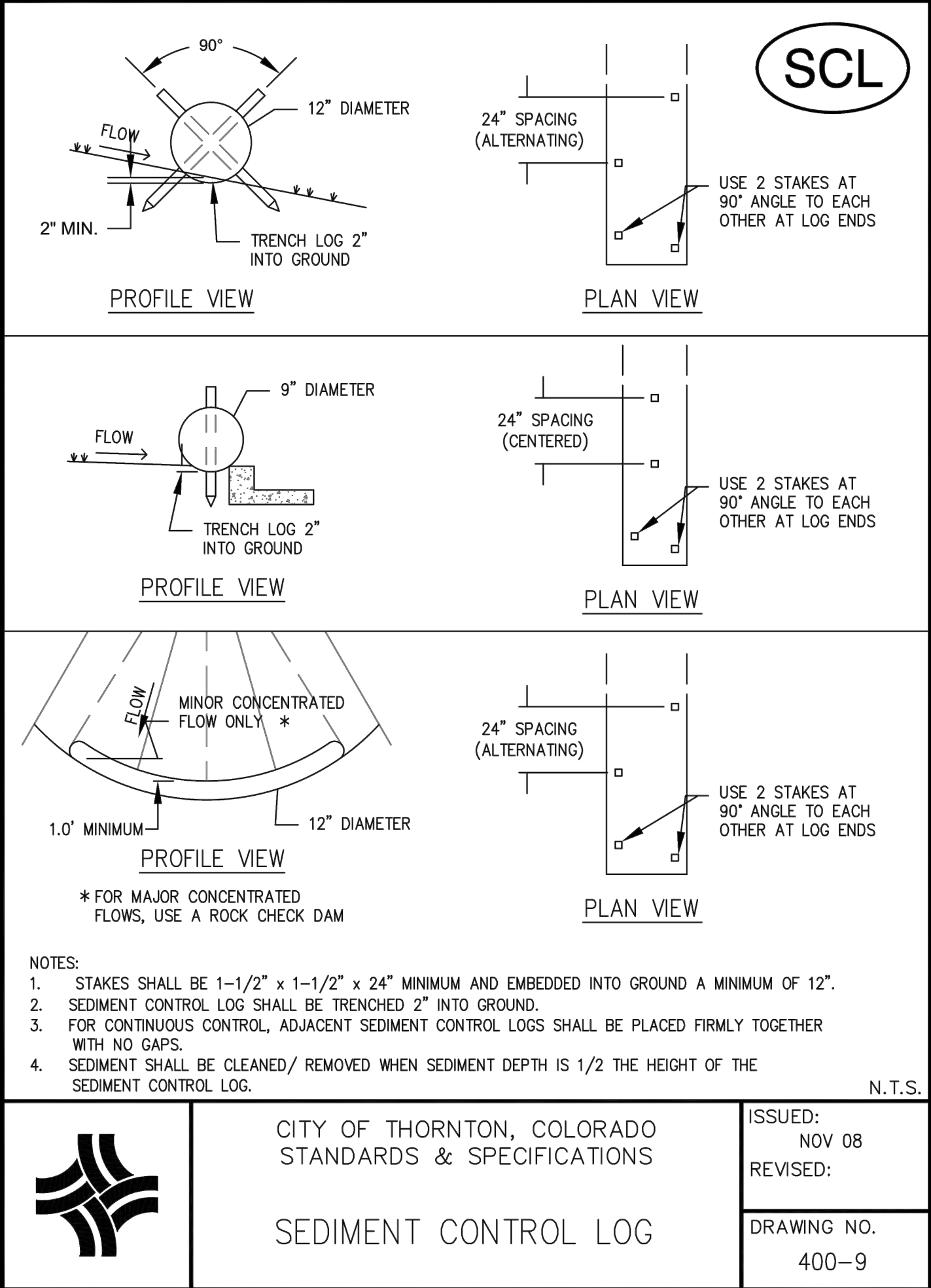


EROSION CONTROL PLAN



NOTES:

- CONTROL MEASURES SHALL BE INSTALLED BEFORE ANY EARTH DISTURBING ACTIVITIES COMMENCE.
- THE OWNER/CONTRACTOR SHALL NOTIFY THE THORNTON INSPECTOR ONCE ALL INITIAL CONTROL MEASURES HAVE BEEN INSTALLED FOR AN INITIAL INSPECTION AT LEAST FORTY EIGHT (48) HOURS PRIOR TO THE INSPECTION. CONSTRUCTION ACTIVITY CANNOT BEGIN UNTIL A PASSING INITIAL INSPECTION HAS OCCURRED.
- STORMWATER DISCHARGES FROM CONSTRUCTION ACTIVITIES SHALL NOT CAUSE, HAVE THE REASONABLE POTENTIAL TO CAUSE, OR MEASURABLY CONTRIBUTE TO EXCEED ANY WATER QUALITY STANDARD.
- SEDIMENT CAUSED BY ACCELERATED SOIL EROSION SHALL BE REMOVED FROM RUNOFF WATER BEFORE IT LEAVES THE CONSTRUCTION SITE.
- THE OWNER/CONTRACTOR SHALL INSPECT THE CONSTRUCTION SITE (INCLUDING ALL CONTROL MEASURES, STORAGE CONTAINERS, AND CONSTRUCTION EQUIPMENT) AT A MINIMUM OF EVERY 7 CALENDAR DAYS OR EVERY 14 CALENDAR DAYS. IF ON THE 14 DAY FREQUENCY A 24-HOUR POST STORM INSPECTION MUST BE CONDUCTED AFTER A PRECIPITATION EVENT OR SNOW MELT. INSPECTIONS SHALL CONTINUE UNTIL AN INACTIVATION NOTICE IS FILED WITH CDPHE.
- THE OWNER/CONTRACTOR SHALL KEEP A RECORD OF ALL INSPECTIONS ON SITE AND AVAILABLE FOR REVIEW BY CDPHE OR CITY STAFF. INSPECTION REPORTS MUST IDENTIFY ANY INCIDENTS OF NON-COMPLIANCE WITH THE TERMS AND CONDITIONS OF THE PERMIT.
- CONTROL MEASURES REQUIRING MAINTENANCE OR ADJUSTMENT SHALL BE REPAIRED IMMEDIATELY AFTER OBSERVATION OF THE FAILING CONTROL MEASURE.
- SILT FENCE PATCHING: PATCHING IS ONLY ALLOWED ON THE TOP HALF OF THE FENCE. NOT MORE THAN TWO (2) PATCHES PER SECTION OF FENCE. SILT FENCE WITH HOLES OR DETERIORATION ON THE LOWER HALF OF THE FENCE MUST BE REPLACED. REPAIR TYPICALLY INVOLVES REPLACING THE SILT FENCE TO MAINTAIN THE CMS EFFECTIVENESS TO DRAIN SLOWLY AND FUNCTION AS ORIGINALLY DESIGNED.
- FOR ALL INSTANCES OF NONCOMPLIANCE BASED ON ENVIRONMENTAL HAZARDS AND CHEMICAL SPILLS AND RELEASES, ALL NEEDED INFORMATION MUST BE PROVIDED ORALLY TO CDPHE SPILL REPORTING LINE (24-HOUR NUMBER FOR ENVIRONMENTAL HAZARDS AND CHEMICAL SPILLS AND RELEASES: 1-877-518-5608) WITHIN 24-HOURS FROM THE TIME THE OWNER/CONTRACTOR BECOMES AWARE OF THE CIRCUMSTANCES.
- STRAW BALES SHALL NOT BE USED FOR PRIMARY EROSION OR SEDIMENT CONTROL (I.E. STRAW BALES MAY BE USED FOR REINFORCEMENT BEHIND ANOTHER BMP SUCH AS SILT FENCE).
- CONTROL MEASURES INTENDED FOR SHEET FLOW SEDIMENT RUNOFF SHALL BE PLACED PARALLEL TO THE SLOPE.
- ALL CONTROL MEASURES SHALL BE CLEANED WHEN SEDIMENT LEVELS ACCUMULATE TO HALF THE DESIGN OF THE CM UNLESS OTHERWISE SPECIFIED.
- ALL SEDIMENT COLLECTED IN CONTROL MEASURES SHALL BE REMOVED UPON INITIAL ACCEPTANCE.
- WIND EROSION AND DUST CONTROL MEASURES MUST BE UTILIZED TO MINIMIZE AIRBORNE PARTICULATE DUST. CONTROL MEASURES MAY INCLUDE MINIMIZING DISTURBED AREAS, WATERING, AND/OR PROVIDING TEMPORARY STABILIZATION.
- PERMANENT EROSION CONTROL MEASURES FOR SLOPES, CHANNELS, DITCHES, OR ANY DISTURBED LAND AREA SHALL BE COMPLETED WITHIN 14 CALENDAR DAYS AFTER FINAL GRADING OR THE FINAL EARTH DISTURBANCE HAS BEEN COMPLETED. WHEN IT IS NOT POSSIBLE TO PERMANENTLY STABILIZE A DISTURBED AREA AFTER AN EARTH DISTURBANCE HAS BEEN COMPLETED OR WHERE SIGNIFICANT EARTH DISTURBANCE ACTIVITY CEASES, TEMPORARY SOIL EROSION CONTROL MEASURES SHALL BE IMPLEMENTED WITHIN 14 CALENDAR DAYS. TEMPORARY EROSION CONTROL MEASURES SHALL BE MAINTAINED UNTIL PERMANENT SOIL EROSION MEASURES ARE IMPLEMENTED.
- FINAL STABILIZATION HAS BEEN ACHIEVED WHEN ALL EARTH DISTURBING ACTIVITIES AT THE SITE HAVE BEEN COMPLETED, AND UNIFORM VEGETATIVE COVER HAS BEEN ESTABLISHED WITH AN INDIVIDUAL PLANT DENSITY OF AT LEAST 70 PERCENT OF PRE-DISTURBANCE LEVELS, OR EQUIVALENT PERMANENT, PHYSICAL EROSION REDUCTION METHODS HAVE BEEN EMPLOYED.
- ALL TEMPORARY CONTROL MEASURES SHALL BE REMOVED FROM THE SITE UPON SUBMITTING THE INACTIVATION NOTICE.
- ALL SITE WASTES (INCLUDING TRASH AND BUILDING MATERIALS) MUST BE PROPERLY MANAGED TO PREVENT POTENTIAL POLLUTION DISCHARGES TO THE M54 OR STATE WATERS.
- A WASHOUT SYSTEM WILL BE REQUIRED AND MUST BE APPROVED BY THE CITY OF THORNTON PRIOR TO CONSTRUCTION.
- VEHICLE TRACKING CONTROL WILL NOT BE REQUIRED SWEEPING AND GOOD CONSTRUCTION HYGIENE WILL BE REQUIRED REGARDLESS.



SEAL:

5690 WEBSTER STREET  
ARVADA, CO 80002  
303.423.6036  
**RICK**  
ENGINEERING COMPANY  
San Diego - Riverside - San Luis Obispo - Sacramento - Orange - Tucson - Phoenix - Las Vegas - Denver

CONSTRUCTION DOCUMENTS PREPARED FOR:  
**TUCK DITCH PARK STRUCTURE**  
FINAL PLANS  
CITY OF THORNTON

PROJECT NO: 2209-B  
DATE: 8/03/2022  
DRAWN/DESIGNED BY: JG / KN  
CHECKED BY: KN

811  
Know what's below.  
Call before you dig.

DRAWING NO.  
**EC-01**  
SHEET NO. 8 OF 8