

# THORNTON COMMUNITY PARK SHADE STRUCTURE

THORNTON COMMUNITY PARK SUBDIVISION LOT 1, BLOCK 1  
LOCATED IN COMMUNITY PARK, WEST OF THOMAS J. SLOCUM MEMORIAL SKATEPARK, 2211 EPPINGER BLVD  
CITY OF THORNTON, COUNTY OF ADAMS, STATE OF COLORADO  
CIP #20-46D

# COVER SHEET FINAL PLANS

**GENERAL NOTES:**

1. CONTRACTOR SHALL VERIFY THE OWNER'S REPRESENTATIVE THAT PLANS ARE CURRENT AND APPROVED.
2. CONTRACTOR IS RESPONSIBLE FOR QUANTITIES AND MATERIAL CALCULATIONS.
3. WORK SHALL BE IN ACCORDANCE WITH THE REQUIREMENTS OF THE CITY OF THORNTON. ANY VARIATIONS FROM THE APPROVED LANDSCAPE PLAN NEED TO BE APPROVED BY THE CITY OF THORNTON.
4. THE CONTRACTOR SHALL OBTAIN ALL NECESSARY AND/OR REQUIRED PERMITS AND PAY ALL RELATED FEES AND/OR TAXES REQUIRED TO INSTALL THE WORK ON THE PLANS.
5. THE CONTRACTOR SHALL BE APPROPRIATELY LICENSED AS REQUIRED BY THE CITY.
6. CONTRACTOR SHALL NOTIFY THE OWNER'S REPRESENTATIVE IMMEDIATELY OF ANY ERRORS, OMISSIONS OR DISCREPANCIES IN EXISTING CONDITIONS OR WITH THE PLANS PRIOR TO THE BEGINNING OF WORK.
7. UNIT PRICES FOR ALL IMPROVEMENTS SHALL BE ESTABLISHED AS A PART OF THE CONTRACT WITH THE OWNER'S REPRESENTATIVE PRIOR TO BEGINNING WORK, TO ACCOMMODATE ADDITIONS AND/OR DELETIONS OF MATERIAL AND/OR LABOR.
8. DETERMINATION OF "EQUAL" SUBSTITUTIONS SHALL BE MADE ONLY BY THE OWNER.
9. SITE OBSERVATIONS BY THE CIVIL ENGINEER / LANDSCAPE ARCHITECT / OWNER DURING ANY PHASE OF THIS PROJECT DOES NOT RELIEVE THE CONTRACTOR OF THEIR PRIMARY RESPONSIBILITY TO PERFORM ALL WORK IN ACCORDANCE WITH THE PLANS, SPECIFICATIONS AND GOVERNING CODES. ANY WORK NOT IN COMPLIANCE MAY BE REJECTED AT ANY TIME.
10. AS BUILT DRAWINGS: A SET PDFS AND AUTOCAD DRAWINGS AND A SET OF SPECIFICATIONS SHALL BE KEPT AT ALL TIMES ON WHICH ALL CHANGES OR VARIATIONS IN THE WORK INCLUDING ALL EXISTING UTILITIES ARE TO BE RECORDED. AS BUILT DRAWINGS SHALL BE PROVIDED TO THE CITY OF THORNTON BEFORE INITIAL ACCEPTANCE OF THE CONSTRUCTION BY THE OWNER'S REPRESENTATIVE.
11. CONTRACTOR AGREES THAT THEY SHALL ASSUME SOLE AND COMPLETE RESPONSIBILITY FOR JOB SITE CONDITIONS DURING THE COURSE OF CONSTRUCTION OF THIS PROJECT. THIS INCLUDES THE SAFETY OF ALL PERSONS AND PROPERTY. THIS REQUIREMENT SHALL APPLY CONTINUOUSLY AND SHALL NOT BE LIMITED TO NORMAL WORKING HOURS.
12. CONTRACTOR SHALL ARRANGE ALL SITE ACCESS, SECURITY, STAGING, SAFE AND EROSION CONTROLS WITH THORNTON PRIOR TO STARTING PROJECT.
13. ALL CLASSIFICATION TESTING SHALL BE PERFORMED BY A QUALIFIED INDEPENDENT TESTING LABORATORY UNDER THE SUPERVISION OF A REGISTERED PE SPECIALIZING IN SOILS ENGINEERING AT THE EXPENSE OF THE RESPONSIBLE PARTY. THE RESPONSIBLE PARTY SHALL COORDINATE WITH AND FULLY COMPLY WITH ALL RECOMMENDATIONS MADE BY THE TESTING AGENCY.
14. FOR ALL CONCRETE WORK: CONCRETE SHALL HAVE FIBER MESH REINFORCEMENT, SHALL BE 4500 PSI AFTER 28 DAYS OF CURING, AND ALL JOINTS SHALL BE SAW CUT. CONTRACTOR MUST BE PREPARED TO SHOW RESULTS OF CONCRETE TESTING UPON REQUEST, PER CITY OF THORNTON STANDARD 609.4.
15. SUBSTANTIAL COMPLETION WILL BE ISSUED AT THE COMPLETION OF ALL CONSTRUCTION OPERATIONS UNDER THIS CONTRACT, AND PROJECT IS OPEN TO THE PUBLIC. PRIOR TO THE BEGINNING OF THE POST-CONSTRUCTION WARRANTY PERIOD, AN INSPECTION WILL BE PERFORMED (OR INITIAL ACCEPTANCE WALK-THROUGH). THE CITY WILL, UPON 7 DAYS ADVANCE NOTICE, MAKE INSPECTION OF THE WORK TO DETERMINE ACCEPTABILITY. THE CITY WILL PREPARE A "PUNCH LIST" OF ITEMS IMPROPERLY INSTALLED, INADEQUATELY SIZED OR OTHERWISE DEFICIENT. THE "PUNCH LIST" DEFICIENCIES SHALL BE CORRECTED NOT MORE THAN 21 CALENDAR DAYS AFTER THE INSPECTION.
16. PRIOR TO THE DATE OF THE WALK-THROUGH AND AS A CONDITION OF RECEIVING INITIAL ACCEPTANCE, THE CONTRACTOR SHALL CONVEY TO THE CITY THE JOB RECORD SET OF ALL CHANGES MADE TO ALL PLANS DURING THE CONSTRUCTION PERIOD, LABELING SAID PRINTS "AS-BUILT". ALL TURNOVER ITEMS NOTED IN OTHER SPECIFICATION SECTIONS SHALL BE DELIVERED PRIOR TO THIS INSPECTION.
17. WORK REQUIRING CORRECTIVE ACTION SHALL BE PERFORMED WITHIN THE FIRST 21 DAYS AFTER THE INITIAL ACCEPTANCE INSPECTION. IF CORRECTIVE WORK IS NOT COMPLETED WITHIN THE TIMEFRAME STATED IN THE GENERAL CONDITIONS OR 21 DAYS WHICHEVER IS THE LEAST, THEN ANOTHER WALK-THROUGH WILL BE REQUIRED AND A NEW "PUNCH LIST" OF DEFICIENCIES, AS WELL AS AN EQUIVALENT EXTENSION OF THE GUARANTEE PERIOD, WILL BE REQUIRED AT NO ADDITIONAL COST TO THE CITY.
18. THE IMPROVEMENTS WILL BE INITIALLY ACCEPTED BY THE CITY WHEN ALL IMPROVEMENTS AND PUNCH LIST ITEMS ARE SATISFACTORILY COMPLETED IN ACCORDANCE WITH THE TERMS OF THE APPROVED CONSTRUCTION DRAWINGS, AND APPLICABLE CITY STANDARDS AND SPECIFICATIONS. IF, AFTER THE INSPECTION, THE CITY IS OF THE OPINION THAT ALL WORK HAS BEEN PERFORMED AS PER THE CONTRACT DOCUMENTS, THE CITY WILL GIVE THE CONTRACTOR WRITTEN NOTICE OF INITIAL ACCEPTANCE SIGNIFYING COMMENCEMENT OF THE ONE-YEAR GUARANTEE PERIOD.



**VICINITY MAP**  
NOT TO SCALE



## INDEX OF SHEETS

SHEET NO.	Sheet Name	DESCRIPTION
1	CS-01	COVER SHEET
2	SP-01	SITE PLAN
3	HD-01	HARDSCAPE DETAILS
4	HD-02	HARDSCAPE DETAILS
5	HD-03	HARDSCAPE DETAILS
6	DP-01	DEMOLITION PLAN
7	GP-01	GRADING PLAN
8	EC-01	EROSION CONTROL PLAN
9	EC-02	EROSION CONTROL DETAILS

OWNER

THE CITY OF THORNTON

LANDSCAPE ARCHITECT:

RICK ENGINEERING COMPANY  
5690 WEBSTER STREET  
ARVADA, CO 80002

Phone: (303)-403-2430  
CONTACT: KIM NELSON

CIVIL ENGINEER

RICK ENGINEERING COMPANY  
5690 WEBSTER STREET  
ARVADA, CO 80002

PHONE: (303) 403-2431  
CONTACT: PATRICK HERN

SURVEYOR

RICK ENGINEERING COMPANY  
5690 WEBSTER STREET  
ARVADA, CO 80002

PHONE: (303) 403-2406  
CONTACT: MARK WILSON

WORK TO BE DONE:

THE SCOPE OF WORK ASSOCIATED WITH THESE PLANS CONSISTS OF PUBLIC IMPROVEMENTS FOR THE THORNTON COMMUNITY PARK PLAYGROUND REDEVELOPMENT NEAR THE SKATE PARK AND COMMUNITY CENTER. THIS PROJECT CONSISTS OF DEMOLITION OF AN EXISTING PLAYGROUND, AND INSTALLATION OF A SHADE SHELTER, SEAT WALL, AND LANDSCAPE BOULDERS. LANDSCAPE AND PARK IMPROVEMENTS IN ACCORDANCE WITH THE FOLLOWING PLANS, SPECIFICATIONS AND STANDARD DRAWINGS OF THE CITY OF THORNTON, COUNTY OF ADAMS, COLORADO.

# THORNTON COMMUNITY PARK SHADE STRUCTURE

**CIP #20-46D**

PROJECT MANAGER

DATE \_\_\_\_\_

PARKS PROJECTS &amp; PLANNING MANAGER

DATE \_\_\_\_\_



Know what's **below**.  
**Call** before you dig.

DRAWING NO.

CS-01

SHEET NO. 1 OF 1







MANUFACTURER: ICON  
MODEL: BV24X24G-P5  
ROOF DECK: 24 GAUGE STEEL  
POST COLOR: ASH GREY  
ROOF COLOR: REGAL BLUE

NOTE: SHADE STRUCTURE AND  
SOLAR PACKAGE TO BE INSTALLED  
BY STRUCTURE MANUFACTURER  
CONTRACTOR.

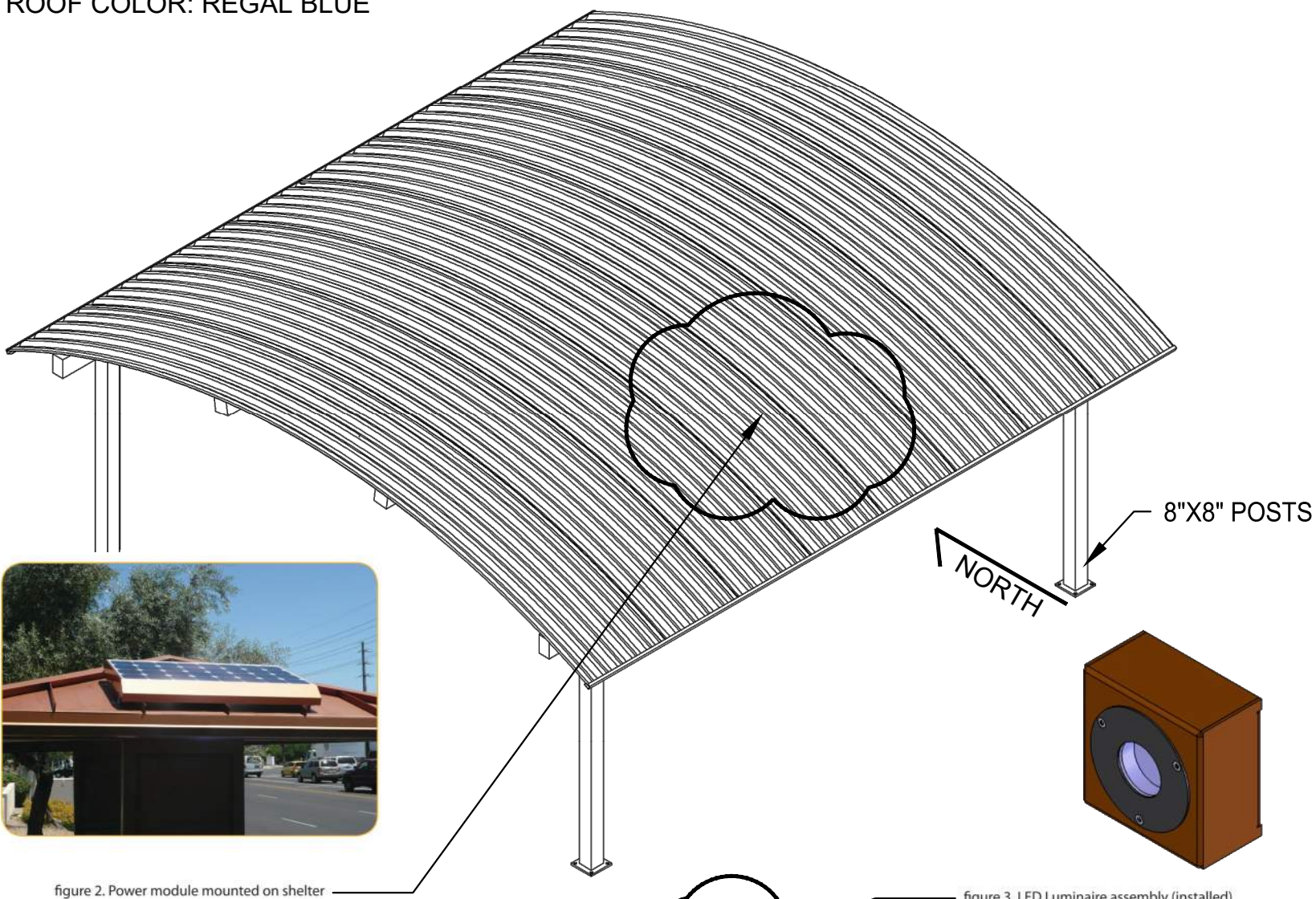
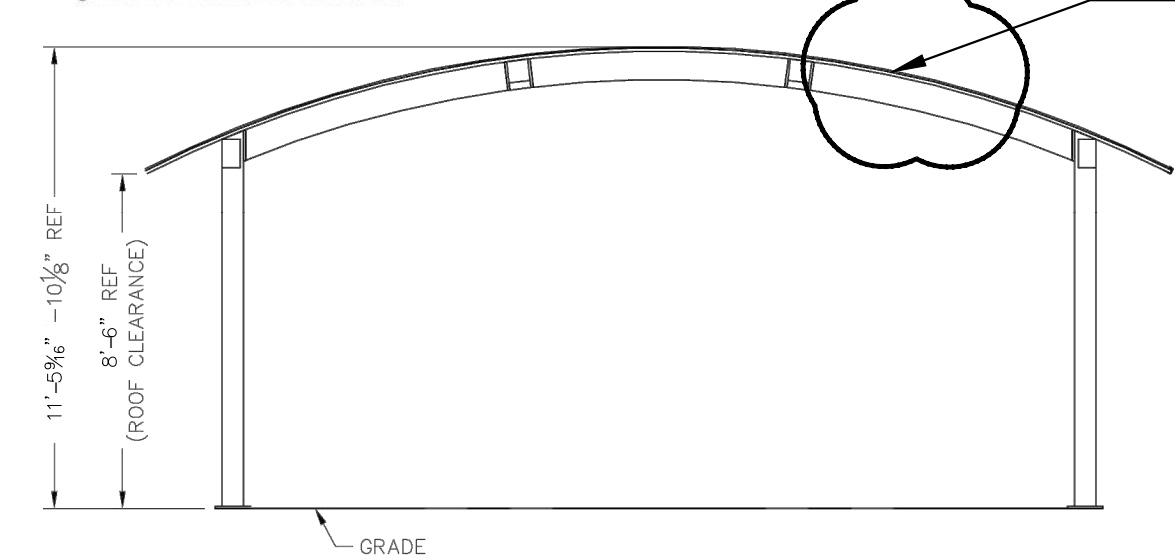
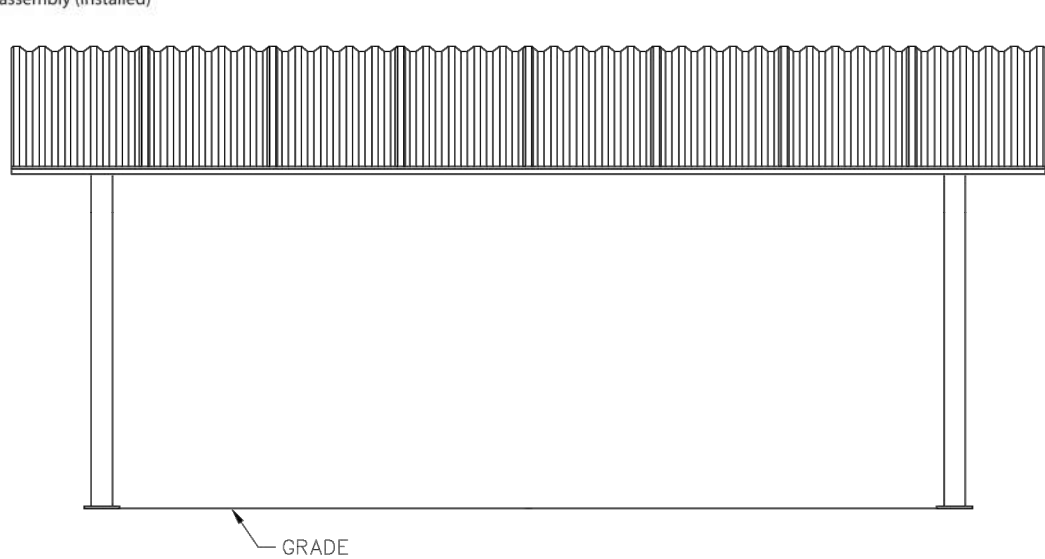


figure 2. Power module mounted on shelter

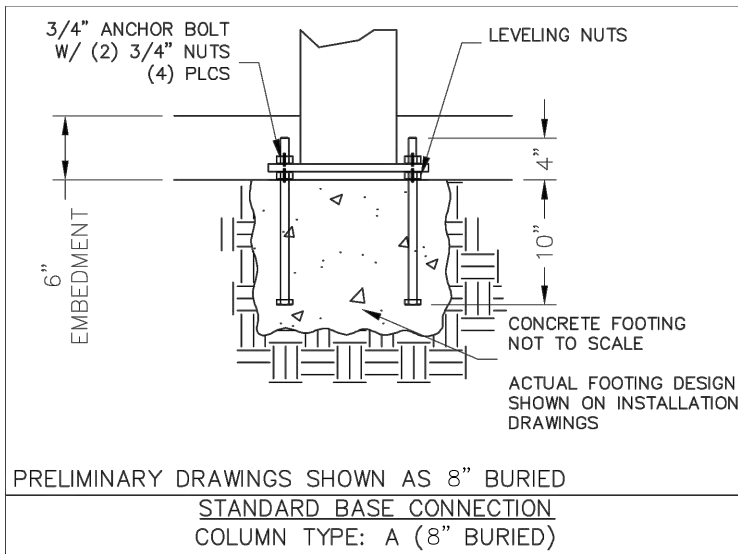
figure 3. LED Luminaire assembly (installed)



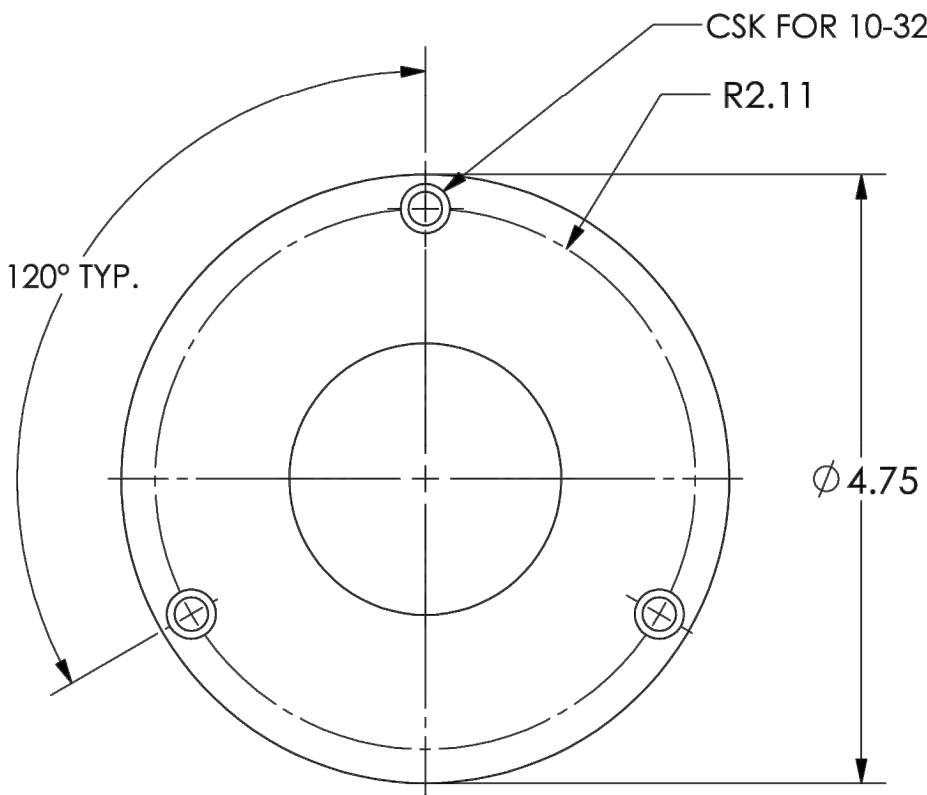
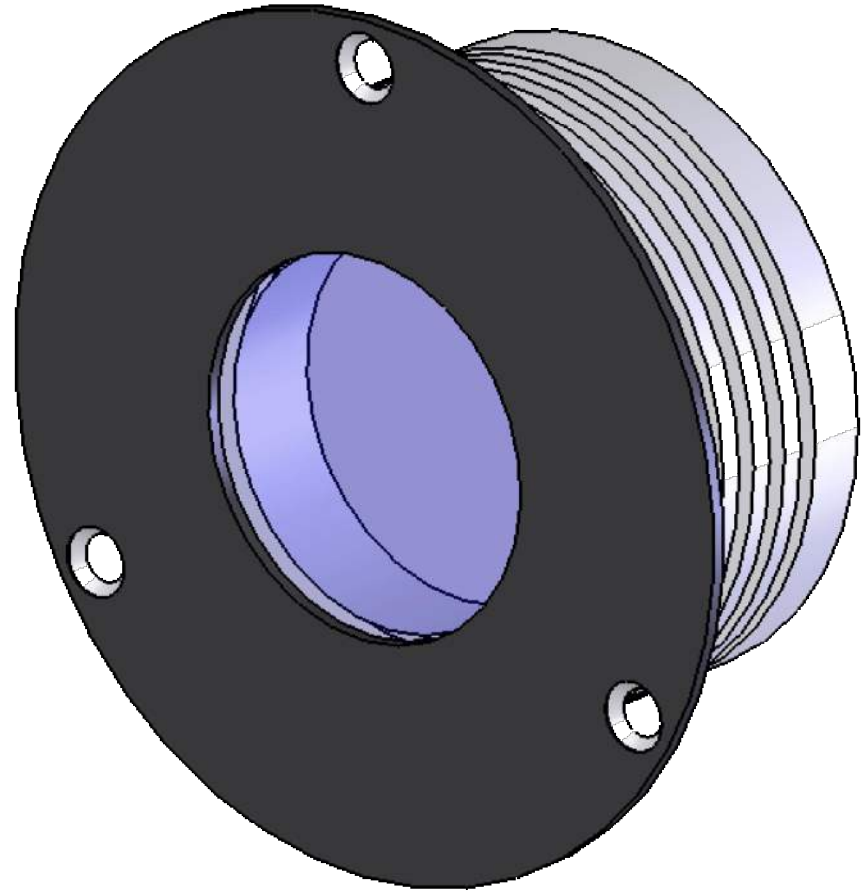
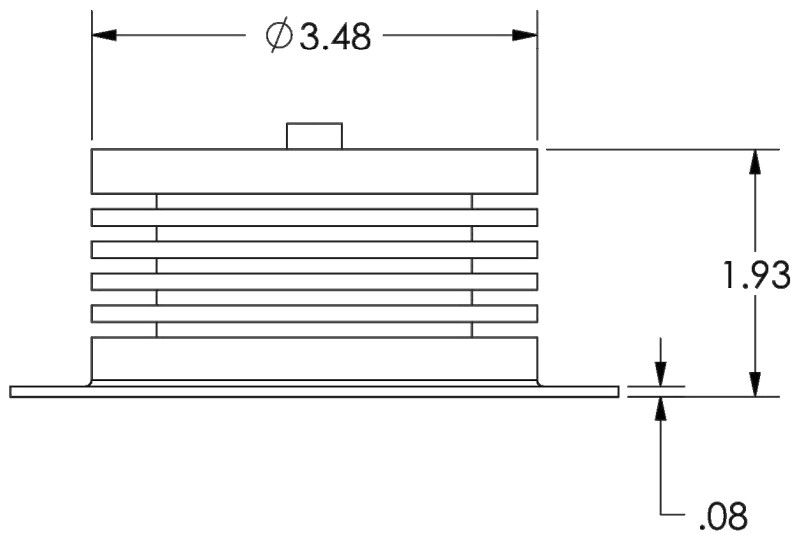
EAST / WEST ELEVATION



NORTH / SOUTH ELEVATION



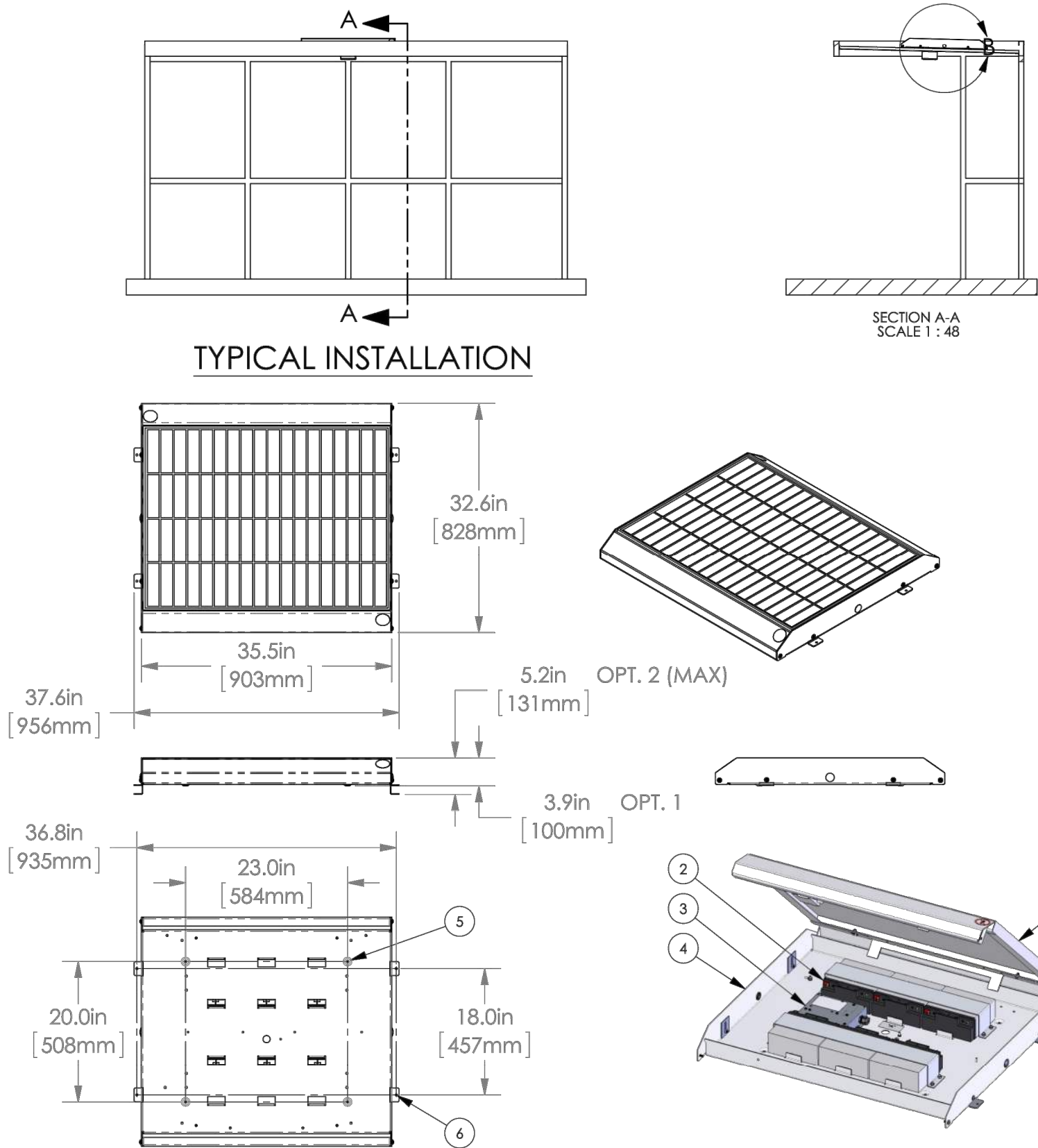
PRELIMINARY DRAWINGS SHOWN AS 8" BURIED  
STANDARD BASE CONNECTION  
COLUMN TYPE: A (8" BURIED)



SPECIFICATIONS:

HOUSING MATERIAL: ALUMINUM  
ENCLOSURE FINISHING: BLACK / CLEAR ANNOIDIZING  
LENS COVER: POLYCARBONATE  
IP RATING: IP54  
VMAX: 28 VDC  
TYPICAL INPUT VOLTAGE: 12-24VDC  
MAX POWER (W): 8W MAX  
POWER: 7.9 W @ 12 VDC, 8.4 W @ 24 VDC  
TEMPERATURERANGE: -40 TO +85 °C [-40 TO 185 °F]

A BARREL VAULT SHADE STRUCTURE  
N.T.S.



TYPICAL INSTALLATION

SECTION A-A  
SCALE 1 : 48

DETAIL B  
SCALE 1 : 6

- NOTES:
- 1 SOLAR ARRAY
  - 2 BATTERY BANK
  - 3 USC ECM
  - 4 CHASSIS - 10 GA ALUMINUM
  - 5 MOUNTING OPTION 1 - FIXED HEIGHT .19" SURFACE TO RMS UNDERSIDE CLEARANCE 4X CLEARANCE HOLES FOR 1/4" HARDWARE
  - 6 MOUNTING OPTION 2 - ADJUSTABLE HEIGHT .19 - 1.40" SURFACE TO RMS UNDERSIDE CLEARANCE 4X CLEARANCE HOLES FOR 1/4" HARDWARE
  - 7 RMS-100 MOUNTED DIRECTLY TOROOF STRUCTURE - OPTION 1 SHOWN (USE OPTION 2 WITH STANDING SEAM ROOF)
  - 8 REMOTELY MOUNTED LED LUMINAIRE - 8W ROUND IN VANDAL RESISTANT HOUSING SHOWN

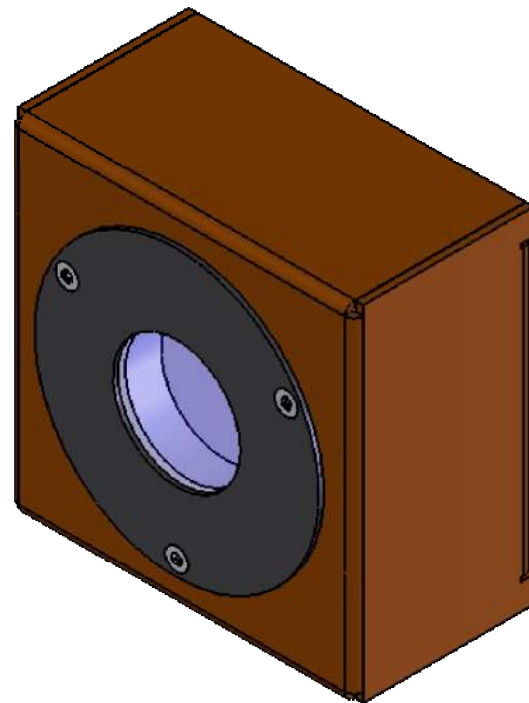
\*\*\*OPERATING PROFILE DEPENDENT ON GEOGRAPHIC LOCATION. PLEASE CONTACT URBAN SOLAR FOR ASSISTANCE WITH LIGHTING DESIGN.\*\*\*

**SPECIFICATIONS:**  
MANUFACTURER: URBAN SOLAR CORP.  
SOLAR ARRAY (W): 100  
NOM. SYSTEM VOLTAGE (VDC): 12  
MAX. BATTERY BANK (Ah): 108  
BATTERY TYPE: SEALED LEAD ACID (SLA)  
CONTROLLER: USC ECM C/W REAL TIME CLOCK  
CHASSIS MATERIAL: ALUMINUM  
CHASSIS COATING: POWDER COAT - POLYESTER  
SYSTEM WEIGHT (lbs): 99 (4 BATT), 112 (5 BATT), 125 (6 BATT)  
FLAT OR RADIUS: RADIUS

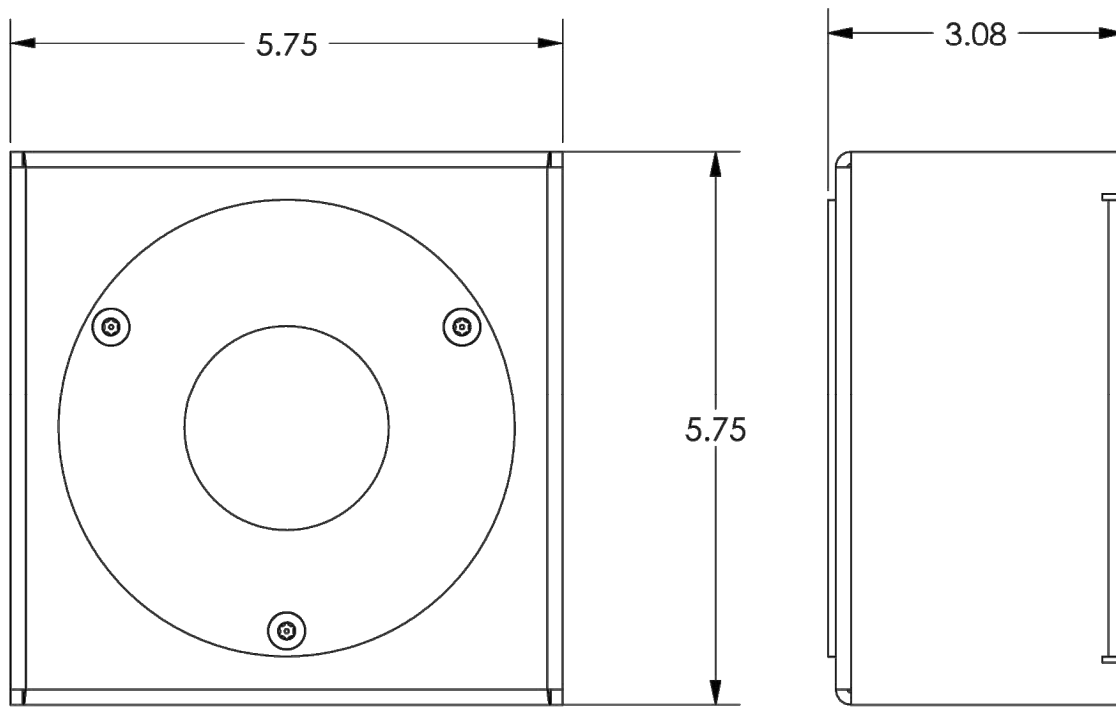


B LED LIGHT  
NOT TO SCALE

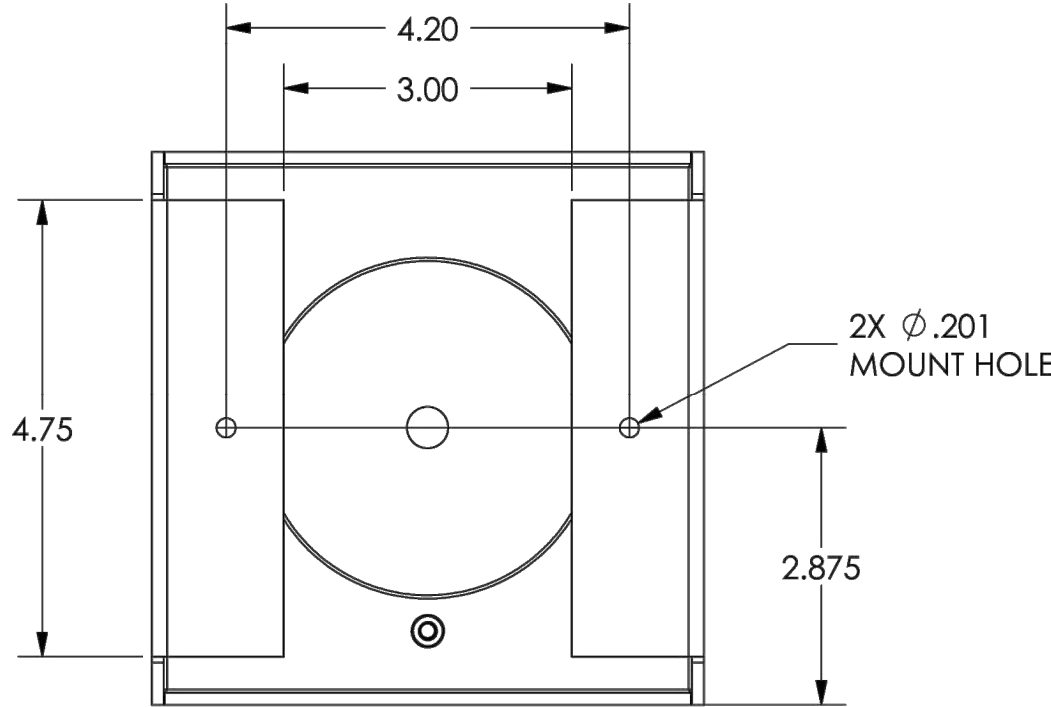
**SPECIFICATIONS: MODEL #RMS100 USC LED ROUND, 8W**  
MANUFACTURER: URBAN SOLAR CORP.  
MOUNT MATERIAL: ALUMINUM, 5052-H32, 1/8"  
MOUNT FINISH: POWDER COAT, POLYESTER



\*MOUNT COLOR IS MATCHED TO APPLICATION. BROWN SHOWN FOR ILLUSTRATION PURPOSES ONLY.



FLUSH MOUNT



C SOLAR LIGHTING POWER MODULE  
NOT TO SCALE

D LED LIGHT ENCLOSURE  
NOT TO SCALE

NO.	BY	DATE	REVISION

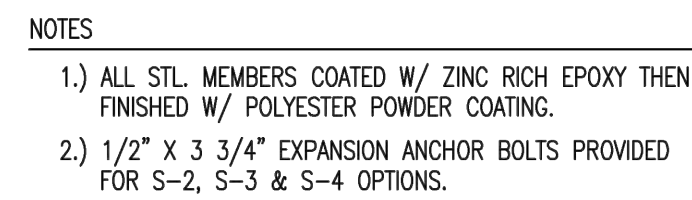
SEAL:

5690 WEBSTER STREET  
ARVADA, CO 80002  
303.423.6036  
rickengineering.com  
San Diego - Riverside - San Luis Obispo - Sacramento - Orange - Tucson - Phoenix - Las Vegas - Denver  
PROJECT NO: 2209-A  
DATE: 8/01/2022  
DRAWN/DESIGNED BY: JG  
CHECKED BY: KN

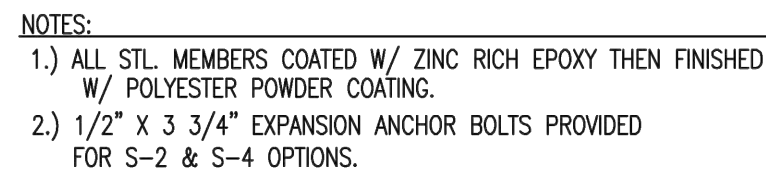
CONSTRUCTION DOCUMENTS PREPARED FOR:  
THORNTON COMMUNITY PARK  
SHADE STRUCTURE  
FINAL PLANS  
CITY OF THORNTON  
HARDSCAPE DETAILS

811  
Know what's below.  
Call before you dig.  
DRAWING NO. HD-01  
SHEET NO. 3 OF 9





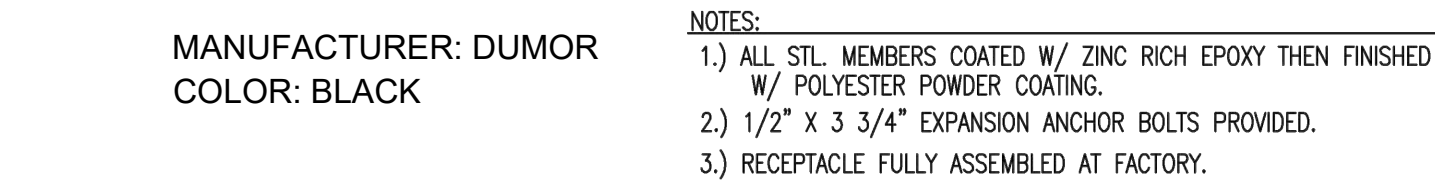
MANUFACTURER: DUMOR  
MODEL: 68-511SK  
COLOR: BLACK




**LENGTH OPTIONS**

☒ 6' TABLE

☐ 8' TABLE

[illegible]

SEAL:



**RICK**  
ENGINEERING COMPANY

5690 WEBSTER STREET  
ARVADA, CO 80002  
303.423.6036

rickengineering.com

PROJECT NO: 2209-A | DRAWN/DESIGNED BY: JG

DATE: 8/01/2022 | CHECKED BY: KN

CONSTRUCTION DOCUMENTS PREPARED FOR:

**THORNTON COMMUNITY PARK**

**SHADE STRUCTURE**

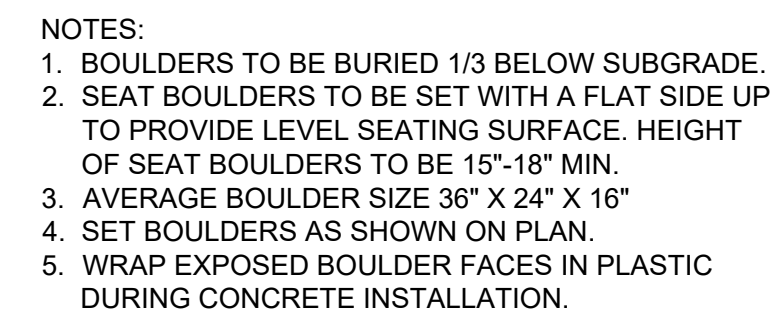
FINAL PLANS

CITY OF THORNTON

**HARDSCAPE DETAILS**



DRAWING NO.  
**HD-02**  
SHEET NO. 4 OF 9



WEED BARRIER FABRIC

PROPOSED CRUSHER FINES @ 6" DEPTH

PROPOSED CAP UNIT TO BE ADHERED TO TOP BLOCK WITH LOCTITE PL LANDSCAPE BLOCK ADHESIVE OR APPROVED EQUAL

HEIGHT PER PLAN

NEW MODULAR BLOCK GRAVITY WALL TO MATCH EXISTING WALL

NEW CONCRETE PAD COMPACTED SUBGRADE

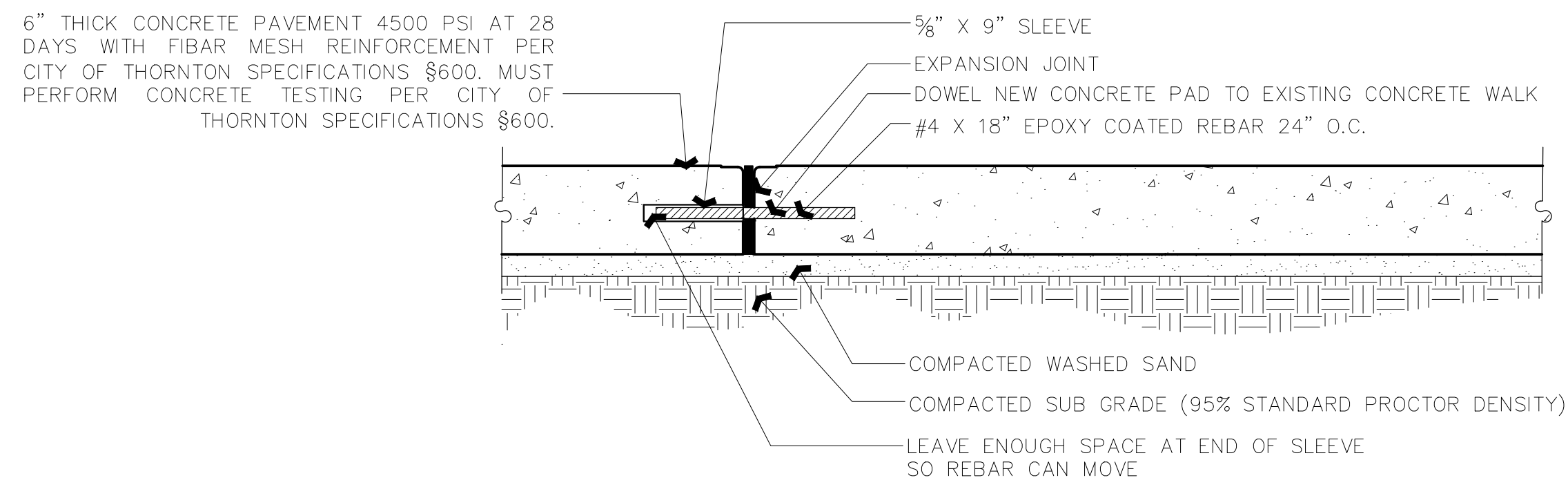
EXPANSION JOINT PER CITY OF THORNTON STANDARD §606.1

BACKFILL AGAINST EXISTING WALL TO HEIGHT SHOWN ON GRADING PLANS. BACKFILL SHALL BE NON-EXPANSIVE WITH A MAXIMUM 15% PASSING THE 200 SIEVE AND MAX LL 25 AND P.I. OF 15. COMPACT TO 95% S.P.D.


DRAIN PIPE 2" PERFORATED PVP PIPE WRAPPED IN FABRIC

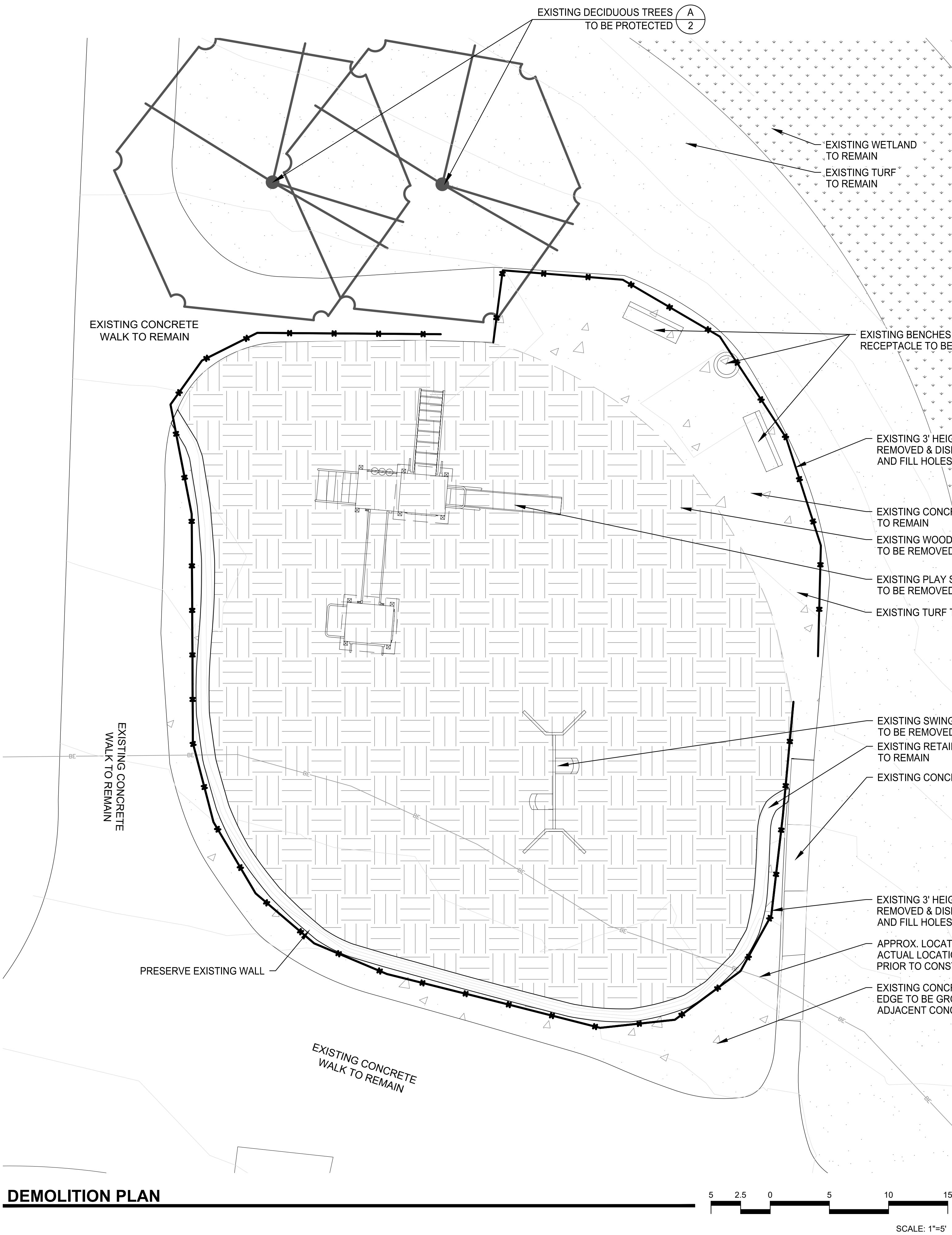
GRAVEL LEVELING BED 4" DEPTH

**B** MODULAR BLOCK WALL  
N.T.S.

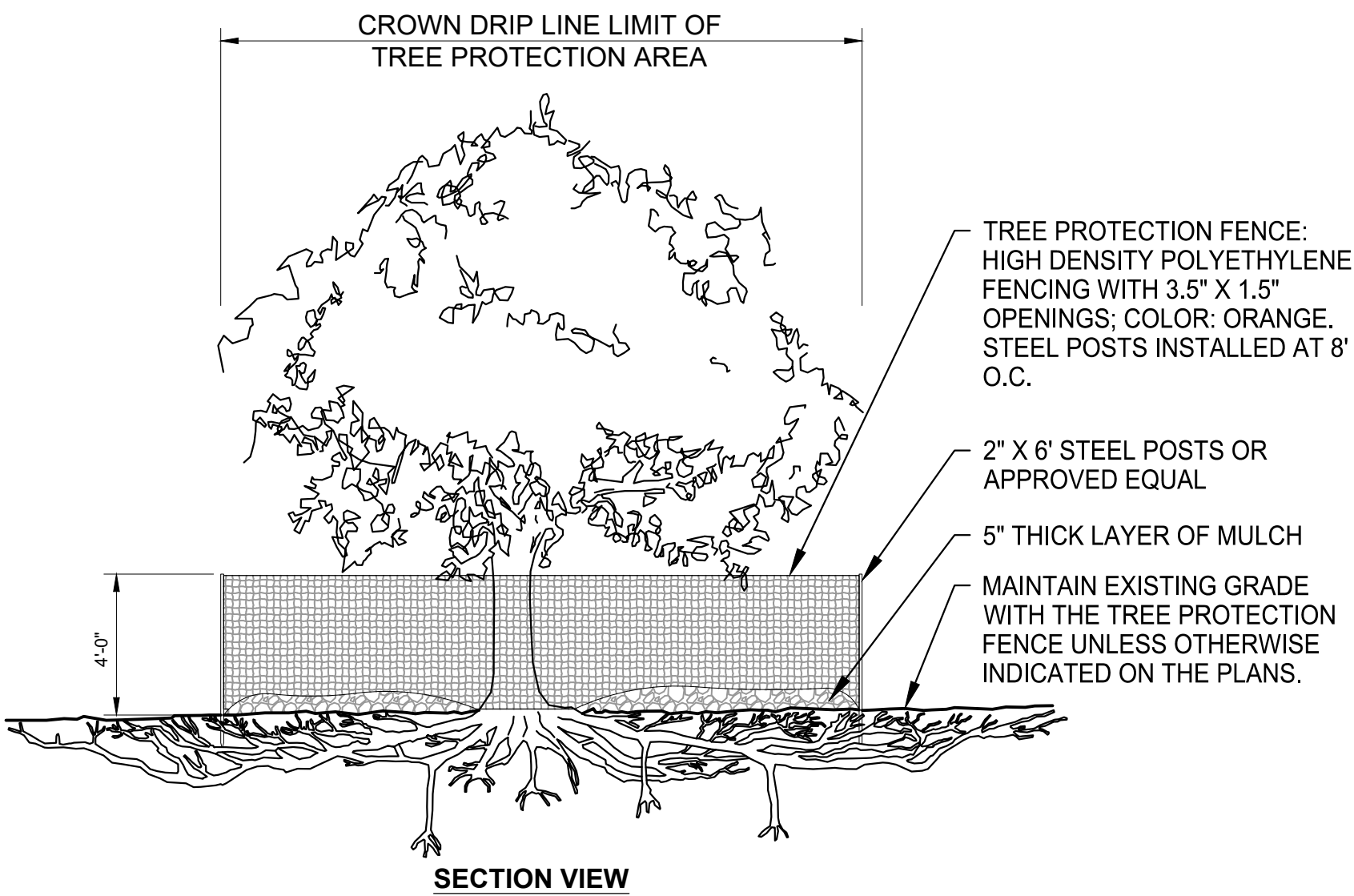


**D CONCRETE PAD WITH DOWELING**  
N.T.S.

<div><p>Know what's below. Call before you dig.</p></div> <div>CONSTRUCTION DOCUMENTS PREPARED FOR: <b>THORNTON COMMUNITY PARK SHADE STRUCTURE</b></div> <div>FINAL PLANS CITY OF THORNTON</div> <div><b>HARDSCAPE DETAILS</b></div>	<div>SEAL:</div> <div><div><div><b>RICK</b></div><div>ENGINEERING COMPANY</div><div>5690 WEBSTER STREET ARVADA, CO 80002 303.423.6036</div><div>rickengineering.com</div></div><div>San Diego - Riverside - San Luis Obispo - Sacramento - Orange - Turson - Phoenix - Las Vegas - Denver</div></div> <div><div>PROJECT NO: 2209-A</div><div>DRAWN/DESIGNED BY: JG</div></div> <div><div>DATE: 8/01/2022</div><div>CHECKED BY: KN</div></div>																																																																																																																																																																																																																																																																																																																																																																																																																																																																																																																																																																																																																																																																																																																																																																																																																																																																																																																																																																																																																																																																																																																																																																																																																																																																																																																																				</
---	---	--	--	--	--	--	--	--	--	--	--	--	--	--	--	--	--	--	--	--	--	--	--	--	--	--	--	--	--	--	--	--	--	--	--	--	--	--	--	--	--	--	--	--	--	--	--	--	--	--	--	--	--	--	--	--	--	--	--	--	--	--	--	--	--	--	--	--	--	--	--	--	--	--	--	--	--	--	--	--	--	--	--	--	--	--	--	--	--	--	--	--	--	--	--	--	--	--	--	--	--	--	--	--	--	--	--	--	--	--	--	--	--	--	--	--	--	--	--	--	--	--	--	--	--	--	--	--	--	--	--	--	--	--	--	--	--	--	--	--	--	--	--	--	--	--	--	--	--	--	--	--	--	--	--	--	--	--	--	--	--	--	--	--	--	--	--	--	--	--	--	--	--	--	--	--	--	--	--	--	--	--	--	--	--	--	--	--	--	--	--	--	--	--	--	--	--	--	--	--	--	--	--	--	--	--	--	--	--	--	--	--	--	--	--	--	--	--	--	--	--	--	--	--	--	--	--	--	--	--	--	--	--	--	--	--	--	--	--	--	--	--	--	--	--	--	--	--	--	--	--	--	--	--	--	--	--	--	--	--	--	--	--	--	--	--	--	--	--	--	--	--	--	--	--	--	--	--	--	--	--	--	--	--	--	--	--	--	--	--	--	--	--	--	--	--	--	--	--	--	--	--	--	--	--	--	--	--	--	--	--	--	--	--	--	--	--	--	--	--	--	--	--	--	--	--	--	--	--	--	--	--	--	--	--	--	--	--	--	--	--	--	--	--	--	--	--	--	--	--	--	--	--	--	--	--	--	--	--	--	--	--	--	--	--	--	--	--	--	--	--	--	--	--	--	--	--	--	--	--	--	--	--	--	--	--	--	--	--	--	--	--	--	--	--	--	--	--	--	--	--	--	--	--	--	--	--	--	--	--	--	--	--	--	--	--	--	--	--	--	--	--	--	--	--	--	--	--	--	--	--	--	--	--	--	--	--	--	--	--	--	--	--	--	--	--	--	--	--	--	--	--	--	--	--	--	--	--	--	--	--	--	--	--	--	--	--	--	--	--	--	--	--	--	--	--	--	--	--	--	--	--	--	--	--	--	--	--	--	--	--	--	--	--	--	--	--	--	--	--	--	--	--	--	--	--	--	--	--	--	--	--	--	--	--	--	--	--	--	--	--	--	--	--	--	--	--	--	--	--	--	--	--	--	--	--	--	--	--	--	--	--	--	--	--	--	--	--	--	--	--	--	--	--	--	--	--	--	--	--	--	--	--	--	--	--	--	--	--	--	--	--	--	--	--	--	--	--	--	--	--	--	--	--	--	--	--	--	--	--	--	--	--	--	--	--	--	--	--	--	--	--	--	--	--	--	--	--	--	--	--	--	--	--	--	--	--	--	--	--	--	--	--	--	--	--	--	--	--	--	--	--	--	--	--	--	--	--	--	--	--	--	--	--	--	--	--	--	--	--	--	--	--	--	--	--	--	--	--	--	--	--	--	--	--	--	--	--	--	--	--	--	--	--	--	--	--	--	--	--	--	--	--	--	--	--	--	--	--	--	--	--	--	--	--	--	--	--	--	--	--	--	--	--	--	--	--	--	--	--	--	--	--	--	--	--	--	--	--	--	--	--	--	--	--	--	--	--	--	--	--	--	--	--	--	--	--	--	--	--	--	--	--	--	--	--	--	--	--	--	--	--	--	--	--	--	--	--	--	--	--	--	--	--	--	--	--	--	--	--	--	--	--	--	--	--	--	--	--	--	--	--	--	--	--	--	--	--	--	--	--	--	--	--	--	--	--	--	--	--	--	--	--	--	--	--	--	--	--	--	--	--	--	--	--	--	--	--	--	--	--	--	--	--	--	--	--	--	--	--	--	--	--	--	--	--	--	--	--	--	--	--	--	--	--	--	--	--	--	--	--	--	--	--	--	--	--	--	--	--	--	--	--	--	--	--	--	--	--	--	--	--	--	--	--	--	--	--	--	--	--	--	--	--	--	--	--	--	--	--	--	--	--	--	--	--	--	--	--	--	--	--	--	--	--	--	--	--	--	--	--	--	--	--	--	--	--	--	--	--	--	--	--	--	--	--	--	--	--	--	--	--	--	--	--	--	--	--	--	--	--	--	--	--	--	--	--	--	--	--	--	--	--	--	--	--	--	--	--	--	--	--	--	--	--	--	--	--	--	--	--	--	--	--	--	--	--	--	--	--	--	--	--	--	--	--	--	--	--	--	--	--	--	--	--	--	--	--	--	--	--	--	--	--	--	--	--	--	--	--	--	--	--	--	--	--	--	--	--	--	--	--	--	--	--	--	--	--	--	--	--	--	--	--	--	--	--	--	--	--	--	--	--	--	--	--	--	--	--	--	--	--	--	--	--	--	--	--	--	--	--	--	--	--	--	--	--	--	--	--	--	--	--	--	--	--	--	--	--	--	--	--	--	--	--	--	--	--	--	--	--	--	--	--	--	--	--	--	--	--	--	--	--	--	--	--	--	--	--	--	--	--	--	--	--	--	--	--	--	--	--	--	--	--	--	--	--	--	--	--	--	--	--	--	--	--	--	--	--	--	--	--	--	--	--	--	--	--	--	--	--	--	--	--	--	--	--	--	--	--	--	--	--	--	--	--	--	--	--	--	--	--	--	--	--	--	--	--	--	--	--	--	--	--	--	--	--	--	--	--	--	--	--	--	--	--	--	--	--	--	--	--	--	--	--	--	--	--	--	--	--	--	--	--	--	--	--	--	--	--	--	--	--	--	--	--	--	--	--	--	--	--	--	--	--	--	--	--	--	--	--	--	--	--	--	--	--	--	--	--	--	--	--	--	--	--	--	--	--	--	--	--	--	--	--	--	--	--	--	--	--	--	--	--	--	--	--	--	--	--	--	--	--	--	----



SITE FEATURES FOR DEMO:	
MULCH	±2,279 SF
CHAIN LINK FENCE	±136 LF
PLAY STRUCTURES	2
TRASH RECEPTACLE	1
BENCHES	2



- NOTES:
- 1 - PRUNING SHALL BE PERFORMED ONLY WITH CITY APPROVAL.
  - 2 - NO EQUIPMENT SHALL OPERATE INSIDE THE PROTECTIVE FENCING INCLUDING DURING FENCE INSTALLATION AND REMOVAL.

**A** EXISTING TREE PROTECTION  
n.t.s.

SEAL:		5690 WEBSTER STREET ARVADA, CO 80002 303.423.6036 rickengineering.com		JG KN	
PROJECT NO:		2209-A		DRAWN/DESIGNED BY:	
DATE:		8/01/2022		CHECKED BY:	
CONSTRUCTION DOCUMENTS PREPARED FOR:		THORNTON COMMUNITY PARK SHADE STRUCTURE		FINAL PLANS CITY OF THORNTON	
DEMOLITION PLAN					
811 Know what's below. Call before you dig.					
DRAWING NO.		DP-01			
SHEET NO.		6		OF 9	



1. A WASHOUT SYSTEM WILL BE REQUIRED AND MUST BE APPROVED BY THE CITY OF THORNTON PRIOR TO CONSTRUCTION.
2. VEHICLE TRACKING CONTROL WILL NOT BE REQUIRED SWEEPING AND GOOD CONSTRUCTION HYGIENE WILL BE REQUIRED REGARDLESS.

Diagram illustrating Elevation Data:

- EXIST. MAJOR CONTOUR (5470)
- EXIST. MINOR CONTOUR (5471)
- PROP. MAJOR CONTOUR (5470)
- PROP. MINOR CONTOUR (5470)
- PROP. SPOT ELEVATION (5216.54)
- PROP. BOTTOM OF WALL ELEVATION (5216.54 BW)
- PROP. TOP OF WALL ELEVATION (5216.54 TW)
- EXISTING SPOT ELEVATION (5215.79) EG

SEAL:

**RICK**  
**ENGINEERING COMPANY**

5690 WEBSTER STREET  
ARVADA, CO 80002  
303.423.6036

rickengineering.com

San Diego - Riverside - San Luis Obispo - Sacramento - Orange - Tucson - Phoenix - Las Vegas - Denver

CONSTRUCTION DOCUMENTS PREPARED FOR:  
**THORNTON COMMUNITY PARK  
SHADE STRUCTURE**

---

FINAL PLANS  
CITY OF THORNTON



Know what's below.  
Call before you dig.

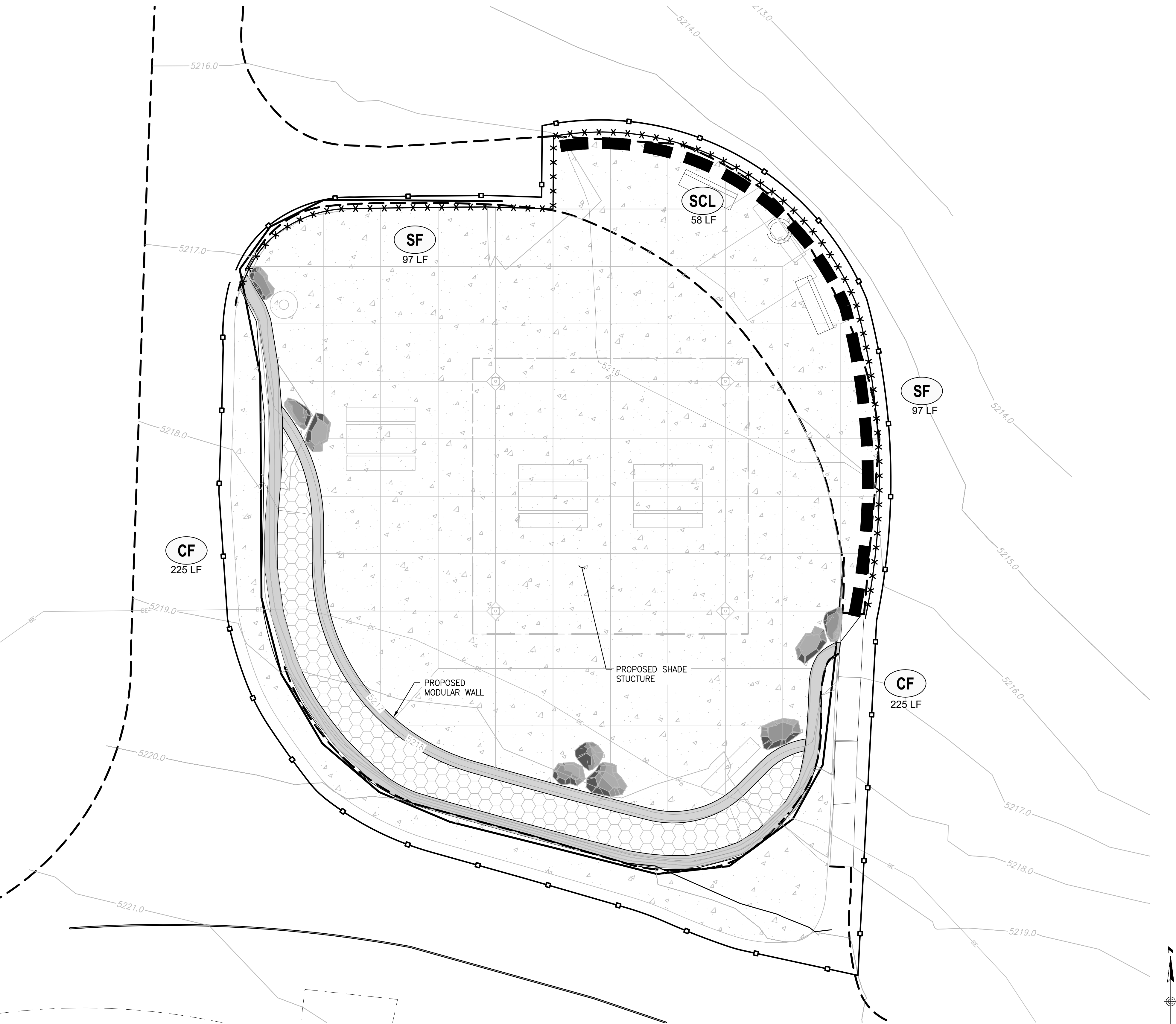
DRAWING NO.  
**GP-01**  
SHEET NO. 7 OF 9

PROJECT NO:	2209-A	DRAWN/DESIGNED BY:	JG
DATE:	8/01/2022	CHECKED BY:	KN

## GRADING PLAN

NO.	BY	DATE	REVISION
-----	----	------	----------





LEGEND:

- □ — (CF) CONSTRUCTION FENCE  
— x x x x — (SF) SILT FENCE  
— ■ — (SCL) SEDIMENT CONTROL LOG

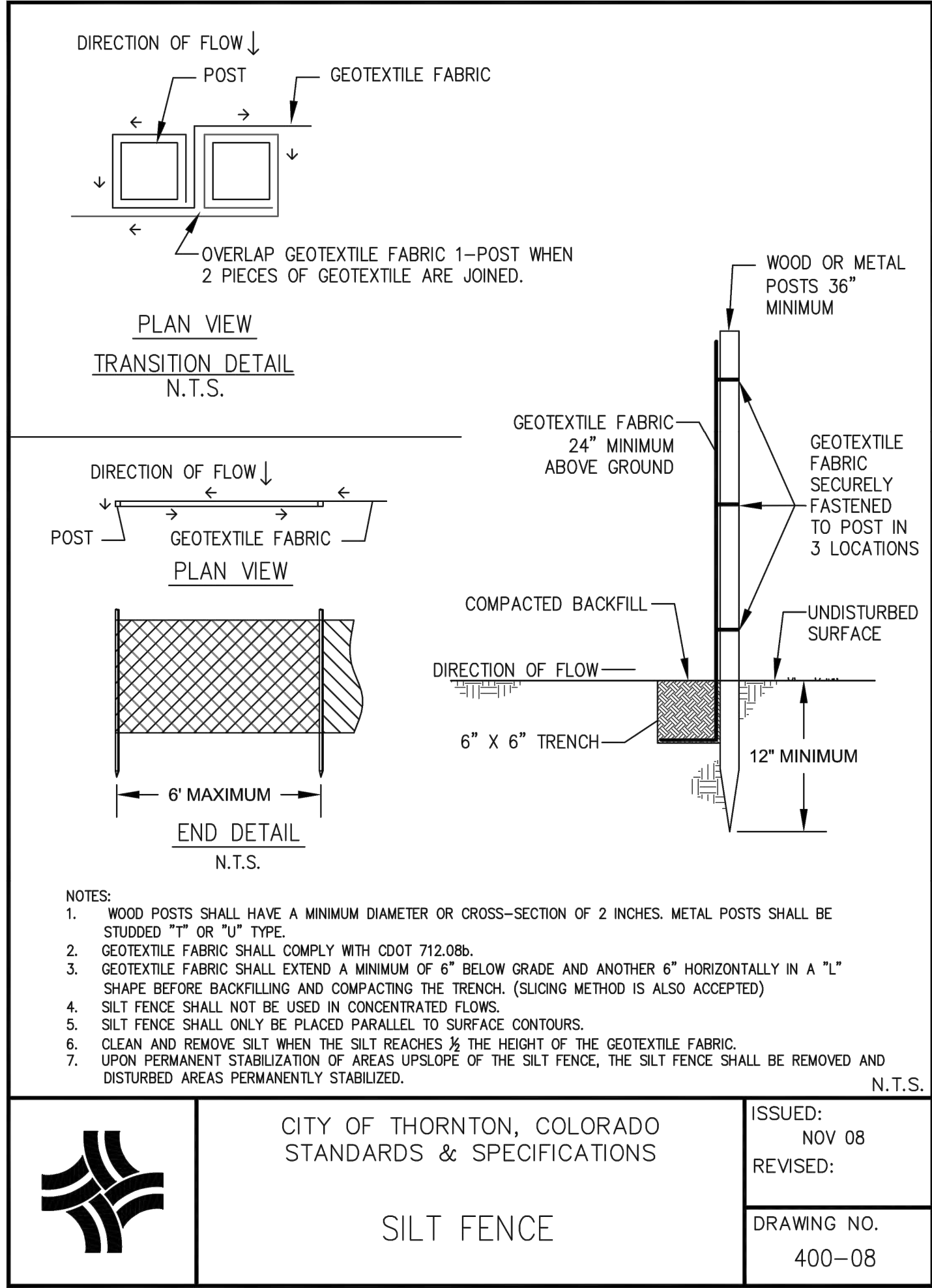
1. SEE EROSION CONTROL DETAIL SHEET  
5 FOR ADDITIONAL INFORMATION

NOTES:

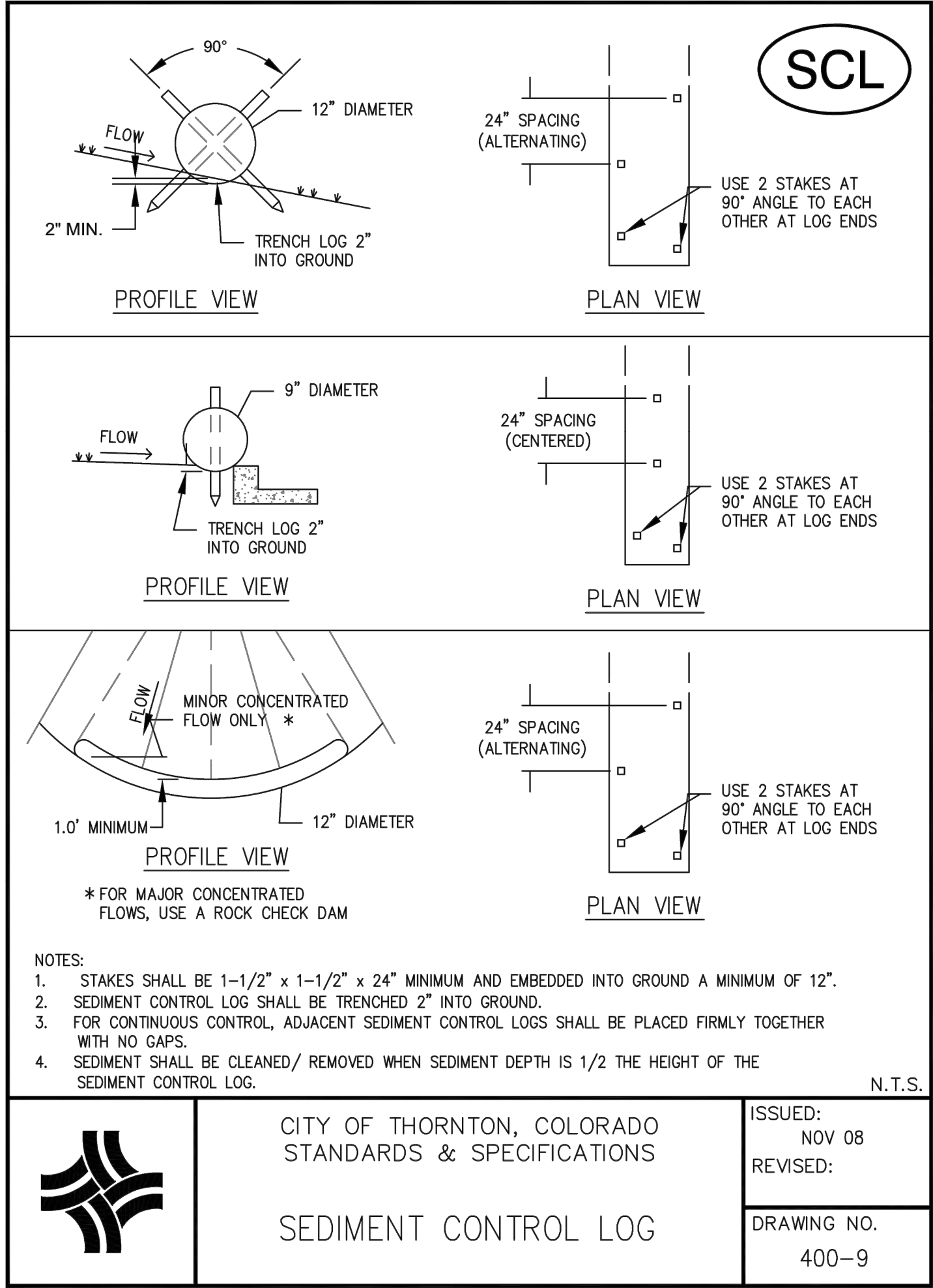
- CONTROL MEASURES SHALL BE INSTALLED BEFORE ANY EARTH DISTURBING ACTIVITIES COMMENCE.
- THE OWNER/CONTRACTOR SHALL NOTIFY THE THORNTON INSPECTOR ONCE ALL INITIAL CONTROL MEASURES HAVE BEEN INSTALLED FOR AN INITIAL INSPECTION AT LEAST FORTY EIGHT (48) HOURS PRIOR TO THE INSPECTION. CONSTRUCTION ACTIVITY CANNOT BEGIN UNTIL A PASSING INITIAL INSPECTION HAS OCCURRED.
- STORMWATER DISCHARGES FROM CONSTRUCTION ACTIVITIES SHALL NOT CAUSE, HAVE THE REASONABLE POTENTIAL TO CAUSE, OR MEASURABLY CONTRIBUTE TO EXCEED ANY WATER QUALITY STANDARD.
- SEDIMENT CAUSED BY ACCELERATED SOIL EROSION SHALL BE REMOVED FROM RUNOFF WATER BEFORE IT LEAVES THE CONSTRUCTION SITE.
- THE OWNER/CONTRACTOR SHALL INSPECT THE CONSTRUCTION SITE (INCLUDING ALL CONTROL MEASURES, STORAGE CONTAINERS, AND CONSTRUCTION EQUIPMENT) AT A MINIMUM OF EVERY 7 CALENDAR DAYS OR EVERY 14 CALENDAR DAYS. IF ON THE 14 DAY FREQUENCY A 24-HOUR POST STORM INSPECTION MUST BE CONDUCTED AFTER A PRECIPITATION EVENT OR SNOW MELT. INSPECTIONS SHALL CONTINUE UNTIL AN INACTIVATION NOTICE IS FILED WITH COPHE.
- THE OWNER/CONTRACTOR SHALL KEEP A RECORD OF ALL INSPECTIONS ON SITE AND AVAILABLE FOR REVIEW BY COPHE OR CITY STAFF. INSPECTION REPORTS MUST IDENTIFY ANY INCIDENTS OF NON-COMPLIANCE WITH THE TERMS AND CONDITIONS OF THE PERMIT.
- CONTROL MEASURES REQUIRING MAINTENANCE OR ADJUSTMENT SHALL BE REPAIRED IMMEDIATELY AFTER OBSERVATION OF THE FAILING CONTROL MEASURE.
- SILT FENCE PATCHING: PATCHING IS ONLY ALLOWED ON THE TOP HALF OF THE FENCE. NOT MORE THAN TWO (2) PATCHES PER SECTION OF FENCE. SILT FENCE WITH HOLES OR DETERIORATION ON THE LOWER HALF OF THE FENCE MUST BE REPLACED. REPAIR TYPICALLY INVOLVES REPLACING THE SILT FENCE TO MAINTAIN THE CMS EFFECTIVENESS TO DRAIN SLOWLY AND FUNCTION AS ORIGINALLY DESIGNED.
- FOR ALL INSTANCES OF NONCOMPLIANCE BASED ON ENVIRONMENTAL HAZARDS AND CHEMICAL SPILLS AND RELEASES, ALL NEEDED INFORMATION MUST BE PROVIDED ORALLY TO COPHE SPILL REPORTING LINE (24-HOUR NUMBER FOR ENVIRONMENTAL HAZARDS AND CHEMICAL SPILLS AND RELEASES: 1-877-518-5608) WITHIN 24-HOURS FROM THE TIME THE OWNER/CONTRACTOR BECOMES AWARE OF THE CIRCUMSTANCES.
- STRAW BALES SHALL NOT BE USED FOR PRIMARY EROSION OR SEDIMENT CONTROL (I.E. STRAW BALES MAY BE USED FOR REINFORCEMENT BEHIND ANOTHER BMP SUCH AS SILT FENCE).
- CONTROL MEASURES INTENDED FOR SHEET FLOW SEDIMENT RUNOFF SHALL BE PLACED PARALLEL TO THE SLOPE.
- ALL CONTROL MEASURES SHALL BE CLEANED WHEN SEDIMENT LEVELS ACCUMULATE TO HALF THE DESIGN OF THE CM UNLESS OTHERWISE SPECIFIED.
- ALL SEDIMENT COLLECTED IN CONTROL MEASURES SHALL BE REMOVED UPON INITIAL ACCEPTANCE.
- WIND EROSION AND DUST CONTROL MEASURES MUST BE UTILIZED TO MINIMIZE AIRBORNE PARTICULATE DUST. CONTROL MEASURES MAY INCLUDE MINIMIZING DISTURBED AREAS, WATERING, AND/OR PROVIDING TEMPORARY STABILIZATION.
- PERMANENT EROSION CONTROL MEASURES FOR SLOPES, CHANNELS, DITCHES, OR ANY DISTURBED LAND AREA SHALL BE COMPLETED WITHIN 14 CALENDAR DAYS AFTER FINAL GRADING OR THE FINAL EARTH DISTURBANCE HAS BEEN COMPLETED. WHEN IT IS NOT POSSIBLE TO PERMANENTLY STABILIZE A DISTURBED AREA AFTER AN EARTH DISTURBANCE HAS BEEN COMPLETED OR WHERE SIGNIFICANT EARTH DISTURBANCE ACTIVITY CEASES, TEMPORARY SOIL EROSION CONTROL MEASURES SHALL BE IMPLEMENTED WITHIN 14 CALENDAR DAYS. TEMPORARY EROSION CONTROL MEASURES SHALL BE MAINTAINED UNTIL PERMANENT SOIL EROSION MEASURES ARE IMPLEMENTED.
- FINAL STABILIZATION HAS BEEN ACHIEVED WHEN ALL EARTH DISTURBING ACTIVITIES AT THE SITE HAVE BEEN COMPLETED, AND UNIFORM VEGETATIVE COVER HAS BEEN ESTABLISHED WITH AN INDIVIDUAL PLANT DENSITY OF AT LEAST 70 PERCENT OF PRE-DISTURBANCE LEVELS, OR EQUIVALENT PERMANENT, PHYSICAL EROSION REDUCTION METHODS HAVE BEEN EMPLOYED.
- ALL TEMPORARY CONTROL MEASURES SHALL BE REMOVED FROM THE SITE UPON SUBMITTING THE INACTIVATION NOTICE.
- ALL SITE WASTES (INCLUDING TRASH AND BUILDING MATERIALS) MUST BE PROPERLY MANAGED TO PREVENT POTENTIAL POLLUTION DISCHARGES TO THE MSA OR STATE WATERS.
- A WASHOUT SYSTEM WILL BE REQUIRED AND MUST BE APPROVED BY THE CITY OF THORNTON PRIOR TO CONSTRUCTION.
- VEHICLE TRACKING CONTROL WILL NOT BE REQUIRED SWEEPING AND GOOD CONSTRUCTION HYGIENE WILL BE REQUIRED REGARDLESS.

SEAL:		5690 WEBSTER STREET ARVADA, CO 80002 303.423.6036 rickengineering.com		JG KN	
CONSTRUCTION DOCUMENTS PREPARED FOR:		THORNTON COMMUNITY PARK SHADE STRUCTURE		PROJECT NO: 2209-A DATE: 8/01/2022	
FINAL PLANS CITY OF THORNTON		EROSION CONTROL PLAN		DRAWING NO: EC-01 SHEET NO. 8 OF 9	
811 Know what's below. Call before you dig.					

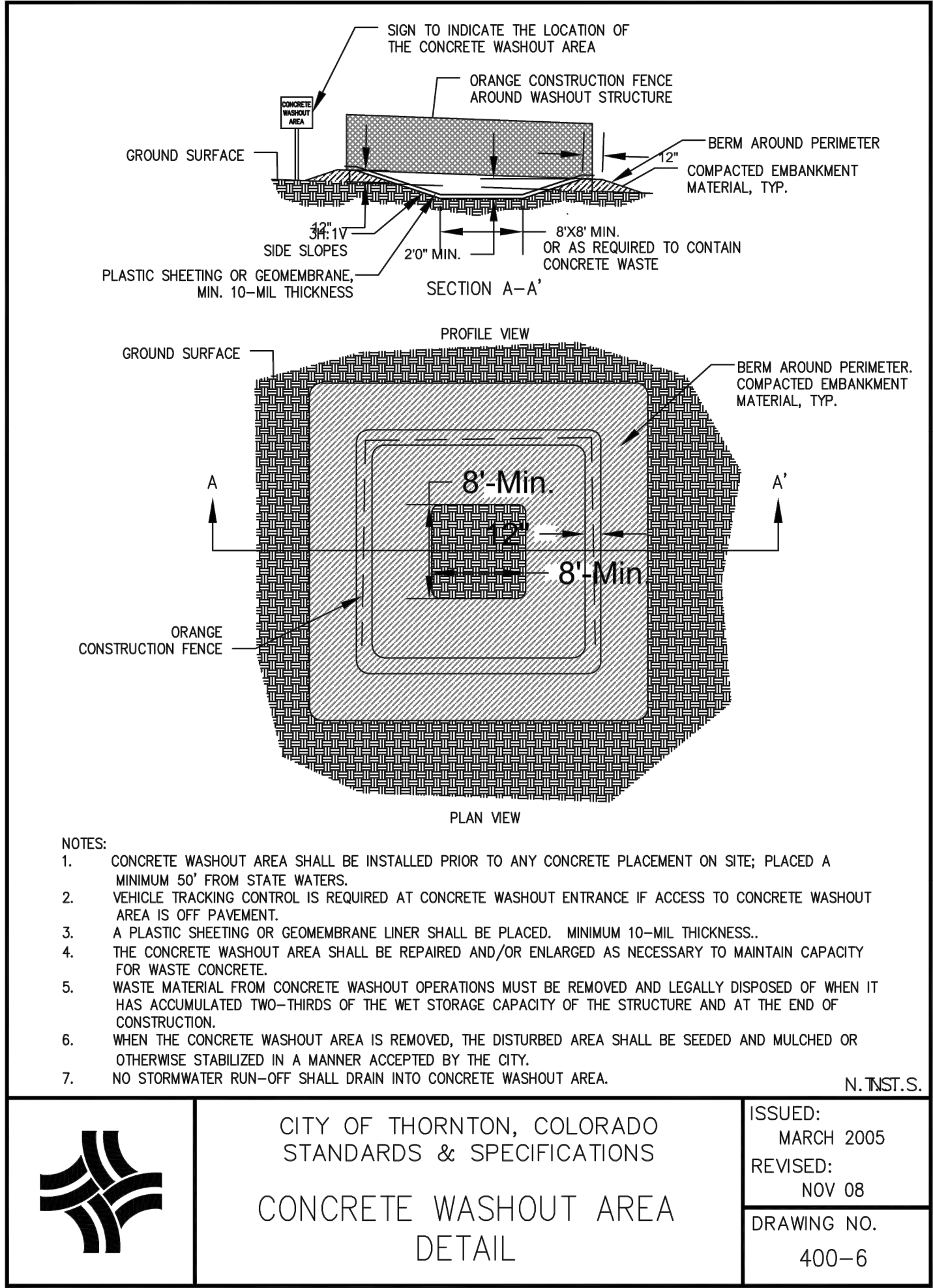




**A** SILT FENCE DETAIL  
N.T.S.



**B** SEDIMENT CONTROL LOG DETAIL  
N.T.S.



**C** CONCRETE WASHOUT DETAIL  
N.T.S.